

PUBLIC LAND SURVEY MONUMENT RECORD

TYPE OF MONUMENT: HARRISON
 ADAMS COUNTY COORDINATES, NAD 83 (2007)

N. 203086.154

E. 570522.264

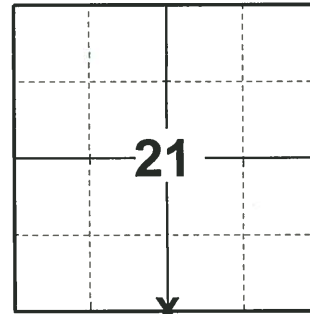
ELEVATION- DATUM

FIELD WORK DATE: 04/17/2019

BASIS FOR MONUMENT LOCATION

1979 - PLS 1478 SET CORNER EQUIDISTANT AND ON LINE BETWEEN ADJACENT SECTION CORNERS. EXCAVATION WITH BACKHOE OPPOSITE THE FENCES YIELDED NO EVIDENCE OF ANY PREVIOUS MONUMENTATION.

2019 - PLS 2675 FOUND MAG NAIL IN THE ROAD SURFACE, REMOVED THE NAIL AND FOUND A HARRISON 4" BELOW THE ROAD SURFACE AND 1 WITNESS. THE MONUMENT AGREES WITH THE EXISTING WITNESS. ACCEPTED THE HARRISON AS THE CORNER LOCATION. SET 4 NEW TIES AND MEASURED TO THE EXISTING WITNESS.



LOCATION
 (INDICATE CORNER BY "X")

SEAL:



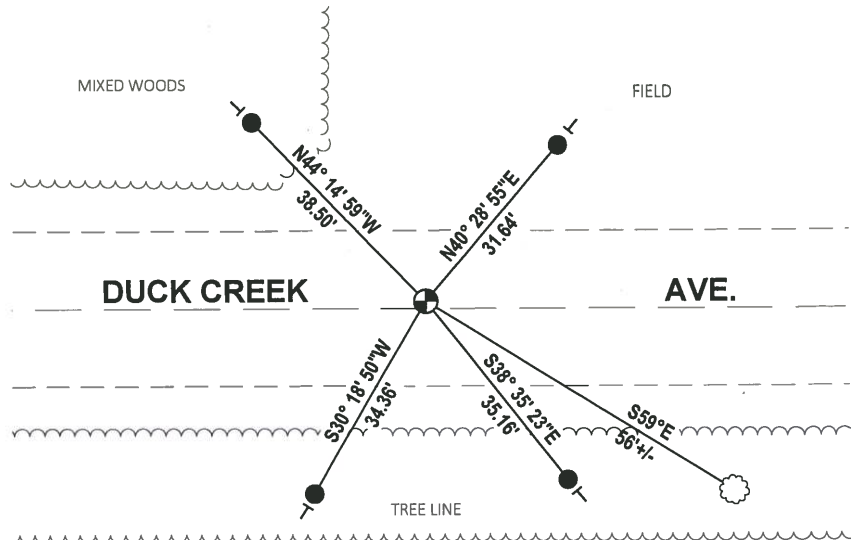
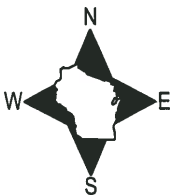
DATA SHOWN HERE ON THIS TIE SHEET IS CORRECT AND COMPLETE TO THE BEST OF MY KNOWLEDGE AND BELIEF.

PROFESSIONAL LAND SURVEYOR

DATE 5/1/19

- TIE SKETCH

NOTE: THE CORNER FALLS ±1' NORTH OF DUCK CREEK AVE. CENTERLINE.



- SET 3/4" x 18" IRON REBAR, 1.50#/FT
- ⊕ FOUND HARRISON MONUMENT
- VINYL "T" POST
- ☼ WITNESS TREE

Government Land Corner Certificate

ADAMS

County

TYPE OF MONUMENT: **HARRISON**

STATE PLANE COORDINATES: N _____
E _____

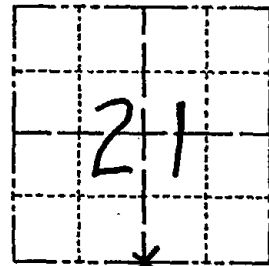
ELEVATION — M.S.L. DATUM: _____

THETA ANGLE: _____

FIELD BOOK: 54 PAGE 56

DRAWN BY: **B. SULLIVAN**

CORNER NO. 86
SECTION 21
TOWN 17
RANGE 7



LOCATION
(Indicated by 'X')

BASIS FOR MONUMENT LOCATION

Show info such as: History of corner, with reference to Vol. and pg., dates, surveyor; exact description of monument replaced; if location computed, by taped or EDM traverse; landowner remarks, etc. (Use reverse side if necessary)

Set corner equidistant and on line between adjacent section corners. Excavation with backhoe opposite the fences yielded no evidence of any previous monumentation.

SEAL:



DATA SHOWN HERE ON
CERTIFIED CORRECT:

Gregory P. Rhinehart
Registered Land Surveyor

DATE: 7/3/79

TIE SKETCH

Show at least four ties, also fence lines, roads, topo, size and type of witness trees' and if off road - best way to arrive at corner.

