

21  
SECTION

17  
TOWN

07  
RANGE

# ADAMS COUNTY

COUNTY CORNER NO: 87

ROMPORTOL ID: 41707210000

## PUBLIC LAND SURVEY MONUMENT RECORD

TYPE OF MONUMENT: HARRISON  
ADAMS COUNTY COORDINATES, NAD 83 (2007)

N. 203090.194

E. 573163.870

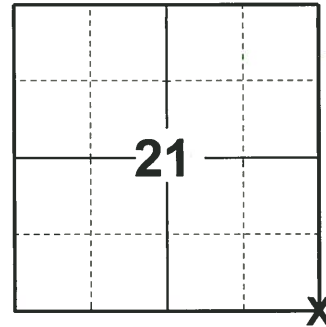
ELEVATION- \_\_\_\_\_ DATUM \_\_\_\_\_

FIELD WORK DATE: 04/14/2019

### BASIS FOR MONUMENT LOCATION

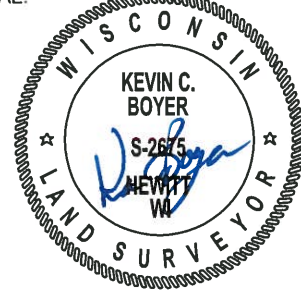
1974 - PLS 1103 RAN EDM/TRANSIT TRAVERSE AROUND ENTIRE SECTION 27 TO DETERMINE SEARCH AREAS. DUG WITH BACKHOE FOR CORNER AND FOUND 9"X12"X8" HARDHEAD WITH POINT UP WITH DRILL HOLE. STONE HAVING BEEN DUG IN AND APPARENTLY NOT DISTURBED. REPLACED SAME WITH STANDARD HARRISON MONUMENT.

2019 - PLS 2675 FOUND HARRISON 2" BELOW THE ROAD SURFACE AND 1 TIE. THE MONUMENT AGREES WITH THE EXISTING TIE. ACCEPTED THE HARRISON AS THE CORNER LOCATION. SET 4 NEW TIES AND MEASURED TO THE EXISTING TIE.



**LOCATION**  
(INDICATE CORNER BY "X")

SEAL:



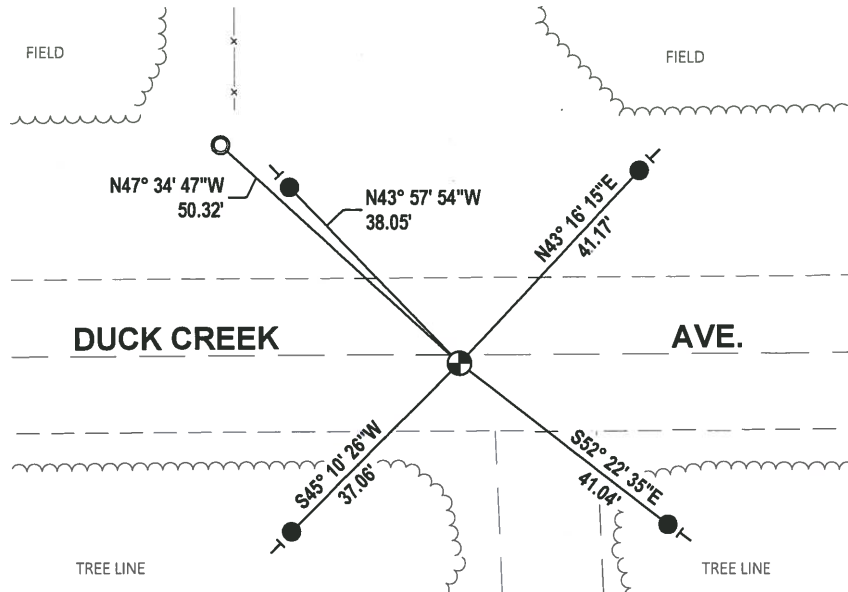
DATA SHOWN HERE ON THIS TIE SHEET IS CORRECT AND COMPLETE TO THE BEST OF MY KNOWLEDGE AND BELIEF.

PROFESSIONAL LAND SURVEYOR

DATE 5/11/19

### - TIE SKETCH

NOTE: THE CORNER FALLS ±2' SOUTH OF DUCK CREEK AVE. CENTERLINE.



- SET 3/4" x 18" IRON REBAR, 1.50#/FT
- FOUND 1-1/4" O.D. IRON PIPE
- ⊕ FOUND HARRISON MONUMENT
- ┆ VINYL "T" POST

# ADAMS COUNTY

## Survey Monument Record

TYPE OF MONUMENT: Standard Harrison

STATE PLANE COORDINATES: N \_\_\_\_\_  
E \_\_\_\_\_

ELEVATION — M.S.L. DATUM: \_\_\_\_\_

THETA ANGLE: \_\_\_\_\_

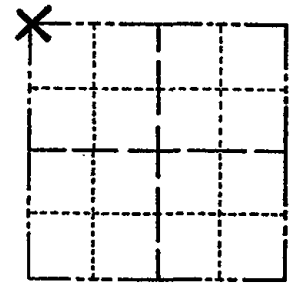
FIELD BOOK: \_\_\_\_\_ PAGE \_\_\_\_\_

CORNER NO. 550

SECTION 27

TOWN 17

RANGE 7



LOCATION  
(Indicated by 'X')

### BASIS FOR MONUMENT LOCATION

(Use reverse side if necessary)

Show info such as: History of corner, with reference to Vol. and pg, dates, surveyor; exact description of monument replaced; if location computed, by taped or EDM traverse; landowner remarks, etc.

SEAL:



Ran EDM/transit traverse around entire Section 27 to determine search areas.

Dug with backhoe for corner and found 9" x 12" x 8" Hardhead with point up with drill hole, stone having been dug in and apparently not disturbed.

Replaced same with Standard Harrison Monument. SEE ADAMS COUNTY SURVEY FIELD NOTES: VOL. 2 PG 141 - Z. WISE 1878

CORNER O.K. 3-15-77 GR-SS  
" " 4-20-82 GR-SS  
" " 1-22-87 JL-SS  
" " 12-12-91 KE-JG  
TIESOK 1-27-97 CR-JG  
CERTIFIED CORRECT:  
*Dale C. Hagen*  
Registered Land Surveyor  
DATE: October 17, 1974

### TIE SKETCH

(Show at least four ties)

#### NOTE

Ties in trees to nail in disc. Those trees indicated by BT are scribed with BT in blaze facing the corner.

