

22
SECTION

17
TOWN

07
RANGE

ADAMS COUNTY

COUNTY CORNER NO.: 88

ROMPORTOL ID: 41707220020

PUBLIC LAND SURVEY MONUMENT RECORD

TYPE OF MONUMENT: HARRISON
ADAMS COUNTY COORDINATES, NAD 83 (2007)

N. 203090.046

E. 575813.554

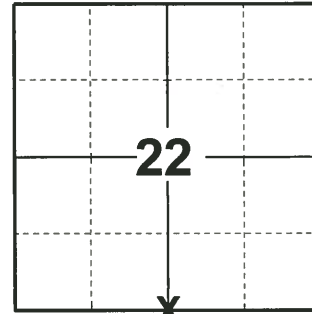
ELEVATION- _____ DATUM _____

FIELD WORK DATE: 04/15/2019

BASIS FOR MONUMENT LOCATION

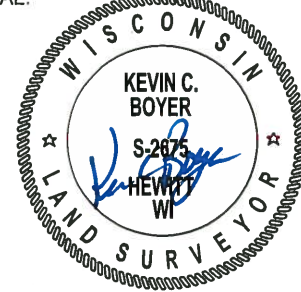
1974 - PLS 1103 RAN EDM/TRANSIT TRAVERSE AROUND SECTION 27 TO DETERMINE THE SEARCH AREA FOR INVESTIGATION. INVESTIGATION YIELDED NO EVIDENCE AFTER A THOROUGH SEARCH, SET HARRISON MONUMENT EQUIDISTANT AND ON LINE BETWEEN THE NORTHEAST AND NORTHWEST CORNERS. OF SECTION 27. DID NOT EXCAVATE BECAUSE OF AREA FILLED WITH LARGE BOULDERS.

2019 - PLS 2675 FOUND HARRISON FLUSH WITH THE ROAD SURFACE AND 2 TIES. THE MONUMENT AGREES WITH BOTH TIES. ACCEPTED THE HARRISON AS THE CORNER LOCATION. SET 2 NEW TIES AND MEASURED TO THE EXISTING TIES.



LOCATION
(INDICATE CORNER BY "X")

SEAL:



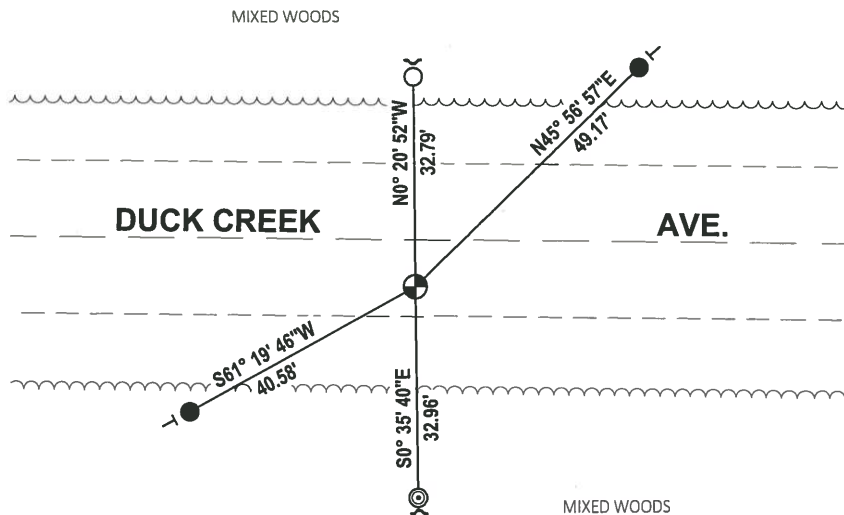
DATA SHOWN HERE ON THIS TIE SHEET IS CORRECT AND COMPLETE TO THE BEST OF MY KNOWLEDGE AND BELIEF.

PROFESSIONAL LAND SURVEYOR

DATE 5/1/19

- TIE SKETCH

NOTE: THE CORNER FALLS ±7' SOUTH OF DUCK CREEK AVE. CENTERLINE.



- SET 3/4" x 18" IRON REBAR, 1.50#/FT
- FOUND 3/4" IRON ROD
- ◎ FOUND 2-3/8" O.D. IRON PIPE
- ⊕ FOUND HARRISON MONUMENT
- ✓ STEEL FENCE POST
- ┌ VINYL "T" POST

ADAMS COUNTY

Survey Monument Record

CORNER NO. 551
 SECTION 27
 TOWN 17
 RANGE 7

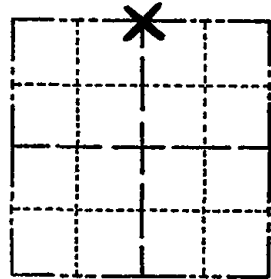
TYPE OF MONUMENT: 30" Harrison standard

STATE PLANE COORDINATES: N _____
E _____

ELEVATION — M.S.L. DATUM: _____

THETA ANGLE: _____

FIELD BOOK: _____ PAGE _____



BASIS FOR MONUMENT LOCATION

(Use reverse side if necessary)

Show info such as: History of corner, with reference to Vol. and pg, dates, surveyor; exact description of monument replaced; if location computed, by taped or EDM traverse; landowner remarks, etc.

Ran EDM/transit traverse around Section 27 to determine the search area for investigation.

Investigation yielded no evidence after a thorough search,
Set Harrison Monument equidistant and on line between the Northeast and Northwest corners of Section 27.

Did not excavate because of area filled in with large boulders.

LOCATION
(Indicated by 'X')

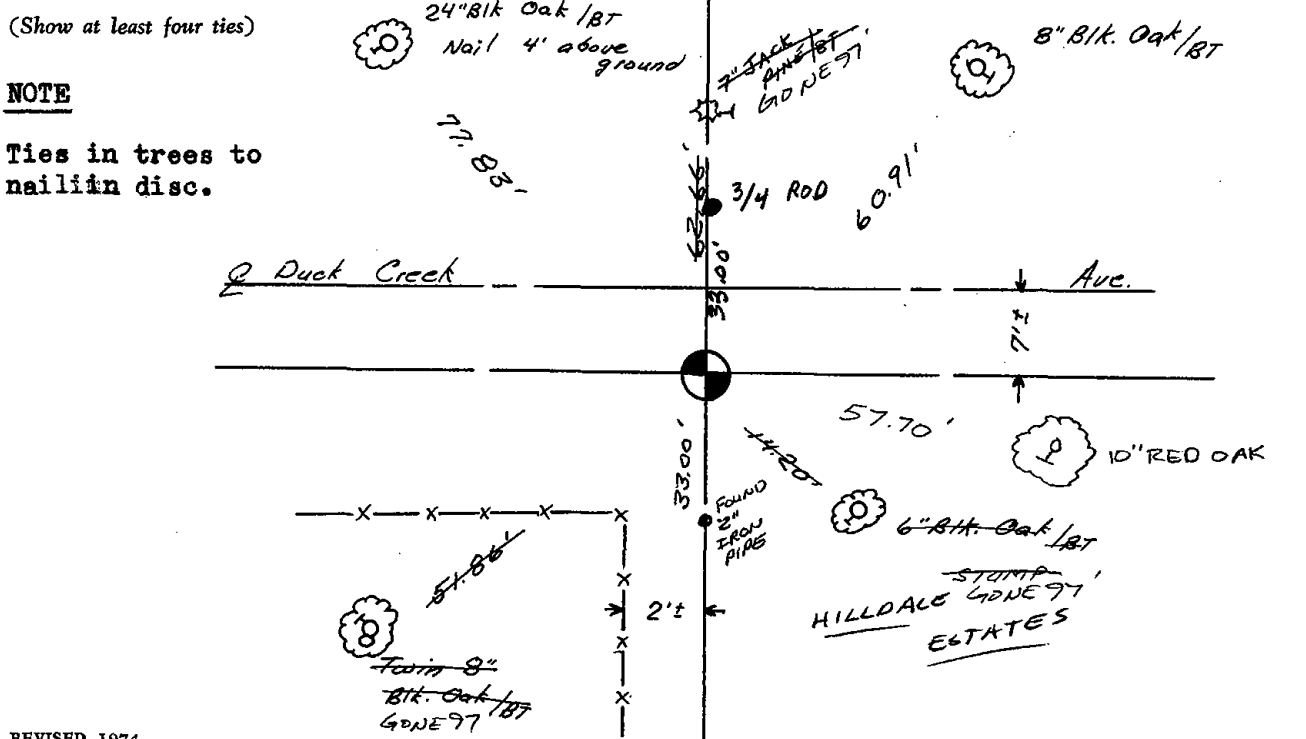
SEAL:



CORNER	O.K.	3-28-77	GR-55
"	"	4-20-82	GR-55
"	"	1-22-87	JL-55
"	"	12-12-91	KZ-56

CERTIFIED CORRECT:
Dale C Hagen
 Registered Land Surveyor
 DATE: October 22, 1974

NEW TIE 1-23-97 CR-56 OK, 9-17-97-56 OK 2-20-12 MS
 TIE SKETCH 1-NEW TIE, 2-13-02-56



NOTE
 Ties in trees to nail in disc.