

PUBLIC LAND SURVEY MONUMENT RECORD

TYPE OF MONUMENT: HARRISON
 ADAMS COUNTY COORDINATES, NAD 83 (2007)

N. 203089.851

E. 578463.087

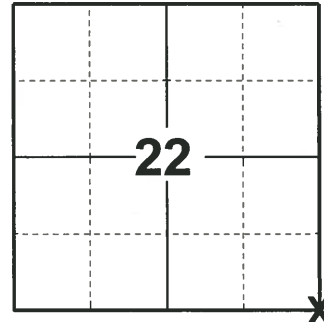
ELEVATION- DATUM

FIELD WORK DATE: 04/15/2019

BASIS FOR MONUMENT LOCATION

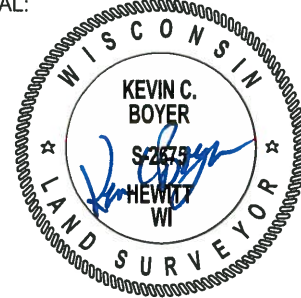
1974 - PLS 1103 EXCAVATION WITH BACKHOE YIELDED NO EVIDENCE OF THE ORIGINAL CORNER SET IN 1851 OR OF ANY SUBSEQUENT REMONUMENTATION OF THE CORNER. RAN EDM/TRANSIT TRAVERSE AROUND ENTIRE SECTION 27, AND SET CORNER BY DOUBLING OVER LINE BETWEEN SOUTHEAST AND EAST QUARTER CORNERS OF SECTION 27. SET STANDARD HARRISON MONUMENT AND TIED SAME.

2019 - PLS 2675 FOUND HARRISON 4" BELOW THE ROAD SURFACE AND DID NOT RECOVER ANY TIES OR WITNESSES. ACCEPTED THE HARRISON AS THE CORNER LOCATION AND SET 4 NEW TIES.



LOCATION
 (INDICATE CORNER BY "X")

SEAL:



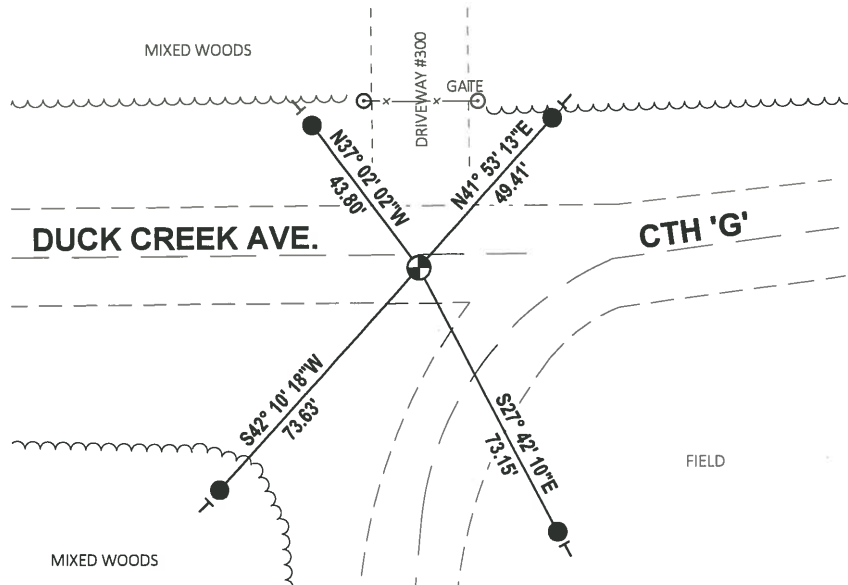
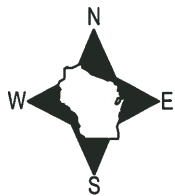
DATA SHOWN HERE ON THIS TIE SHEET IS CORRECT AND COMPLETE TO THE BEST OF MY KNOWLEDGE AND BELIEF.

PROFESSIONAL LAND SURVEYOR

DATE 5/1/19

- TIE SKETCH

NOTE: THE CORNER FALLS ±4' SOUTH OF DUCK CREEK AVE.



- SET 3/4" x 18" IRON REBAR, 1.50#/FT
- ⊕ FOUND HARRISON MONUMENT
- └ VINYL "T" POST

ADAMS COUNTY

Survey Monument Record

TYPE OF MONUMENT: 30" Harrison standard

STATE PLANE COORDINATES: N _____

E. _____

ELEVATION — M.S.L. DATUM: _____

THETA ANGLE: _____

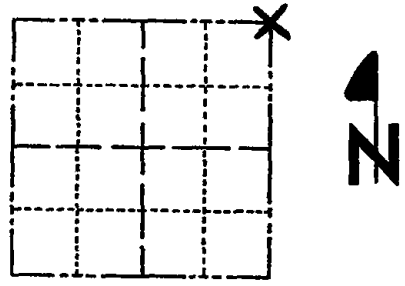
FIELD BOOK: _____ PAGE _____

CORNER NO. 555

SECTION 27

TOWN 17

RANGE 7



LOCATION
(Indicated by 'X')

SEAL:

BASIS FOR MONUMENT LOCATION

(Use reverse side if necessary)

Show info such as: History of corner, with reference to Vol. and pg. dates, surveyor; exact description of monument replaced; if location computed, by taped or EDM traverse; landowner remarks, etc.

Excavation with backhoe yielded no evidence of the original corner set in 1851 or of any subsequent remonumentation of the corner.

Ran EDM/transit traverse around entire Section 27, and set corner by doubling over line between Southeast and East Quarter corners of Section 27.

Set Standard Harrison Monument and tied same.



CERTIFIED CORRECT:

Dale C. Hagen
Registered Land Surveyor

DATE: October 22, 1974

CORNER	O.K.	3-28-77	GR-SS
"	"	4-20-82	GR-SS
"	"	1-22-87	JL-SS
"	"	12-12-91	KZ-JG
TIES OK		1-29-97	CR-JG

TIE SKETCH

(Show at least four ties) 1-NEW TIE COR OK 2-13-02-JG
OK 9-17-07-JG
" 2-20-12 MS

Note

Ties in trees to nail in disc.

