

23
SECTION

17
TOWN

07
RANGE

ADAMS COUNTY

COUNTY CORNER NO: 90

ROMPORTOL ID: 41707230020

PUBLIC LAND SURVEY MONUMENT RECORD

TYPE OF MONUMENT: HARRISON
ADAMS COUNTY COORDINATES, NAD 83 (2007)

N. 203108.507

E. 581099.767

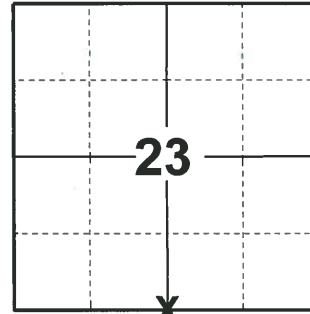
ELEVATION- DATUM

FIELD WORK DATE: 04/15/2019

BASIS FOR MONUMENT LOCATION

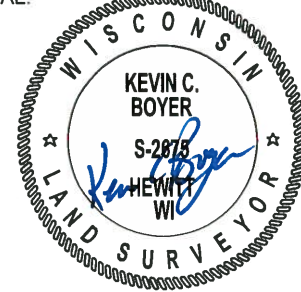
1975 - PLS 1103 RAN EDM/TRANSIT TRAVERSE AROUND SECTIONS 22, 23, AND 24, AND TIED INTO TRAVERSE AROUND SECTION 27. EXCAVATION WITH BACKHOE REVEALED NO EVIDENCE OF THE ORIGINAL CORNER OR ANY REMONUMENTATION. COULD FIND NO EVIDENCE OF ANY WITNESS MONUMENTS. SET CORNER EQUIDISTANT AND ON LINE BETWEEN ADJACENT SECTION CORNERS.

2019 - PLS 2675 FOUND HARRISON FLUSH WITH THE ROAD SURFACE, 2 TIES, AND 1 WITNESS. THE MONUMENT AGREES WITH THE TIES AND WITNESS. ACCEPTED THE HARRISON AS THE CORNER LOCATION. SET 1 NEW TIE AND MEASURED TO A FOUND PROPERTY IRON AND THE EXISTING TIES AND WITNESS.



LOCATION
(INDICATE CORNER BY "X")

SEAL:



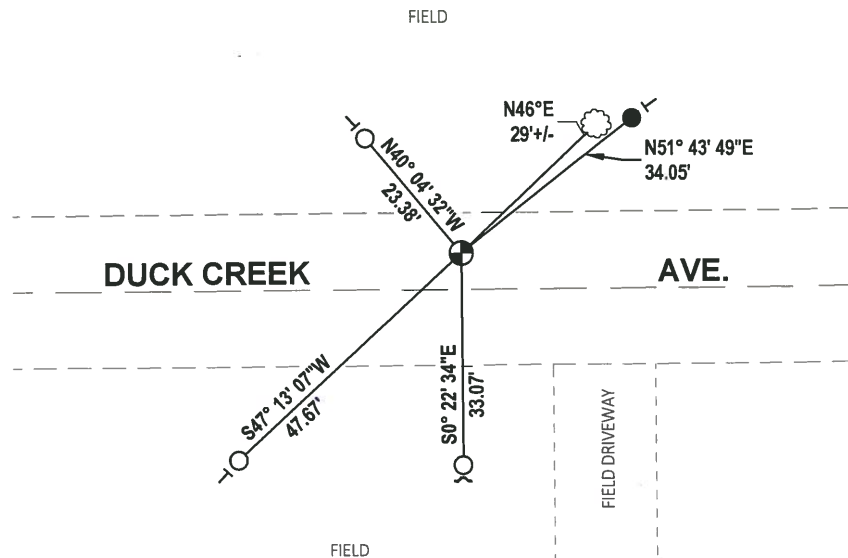
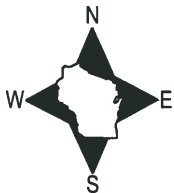
DATA SHOWN HERE ON THIS TIE SHEET IS CORRECT AND COMPLETE TO THE BEST OF MY KNOWLEDGE AND BELIEF.

PROFESSIONAL LAND SURVEYOR

DATE 5/1/19

TIE SKETCH

NOTE: THE CORNER FALLS ±6' NORTH OF DUCK CREEK AVE. CENTERLINE.



- SET 3/4" x 18" IRON REBAR, 1.50#/FT
- FOUND 3/4" IRON ROD
- ⊕ FOUND HARRISON MONUMENT
- ↗ STEEL FENCE POST
- ┌ VINYL "T" POST
- ☉ WITNESS TREE

ADAMS COUNTY

Survey Monument Record

TYPE OF MONUMENT: HARRISON

STATE PLANE COORDINATES: N _____
E _____

ELEVATION — M.S.L. DATUM: _____

THETA ANGLE: _____

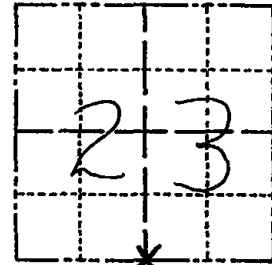
FIELD BOOK: _____ PAGE _____

CORNER NO. 781

SECTION 23

TOWN 17

RANGE 7



LOCATION
(Indicated by 'X')

BASIS FOR MONUMENT LOCATION

(Use reverse side if necessary)

Show info such as: History of corner, with reference to Vol. and pg, dates, surveyor; exact description of monument replaced; if location computed, by taped or EDM traverse; landowner remarks, etc.

SEAL:



Ran EDM/transit traverse around Sections 22, 23 and 24, and tied into traverse around Section 27.

Excavation with backhoe revealed no evidence of the original corner or any remonumentation.

Could find no evidence of any witness monuments.

Set corner equidistant and on line between adjacent section corners.

CERTIFIED CORRECT:

Dale C. Hagen

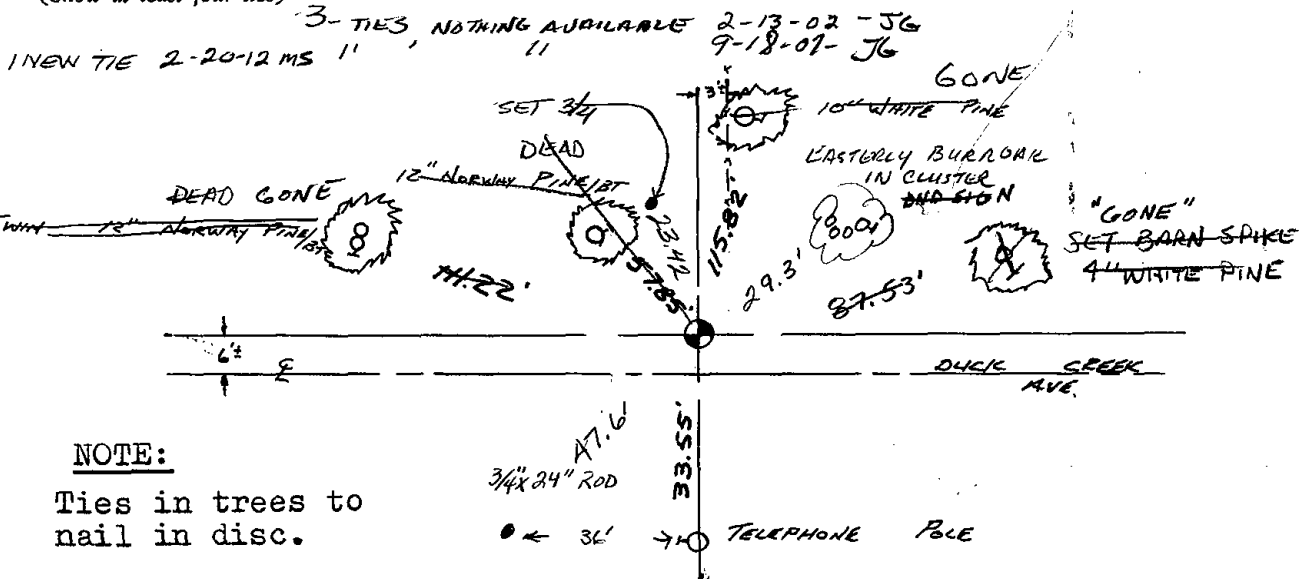
Registered Land Surveyor

DATE: August 7, 1975

CORNER O.K. 3-28-77 GR-SS
" " 5-26-82 PK-SS
" " 1-6-87 GR

TIE SKETCH CORNER OK 12-12-91 - KZ-5G

(Show at least four ties) NEW TIE 5-13-97 SH



NOTE:

Ties in trees to nail in disc.