

23
SECTION

17
TOWN

07
RANGE

ADAMS COUNTY

COUNTY CORNER NO: 91

ROMPORTOL ID: 41707230000

PUBLIC LAND SURVEY MONUMENT RECORD

TYPE OF MONUMENT: HARRISON
ADAMS COUNTY COORDINATES, NAD 83 (2007)

N. 203127.183

E. 583736.411

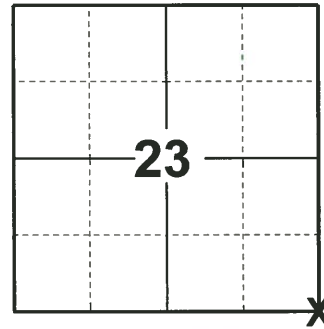
ELEVATION- _____ DATUM _____

FIELD WORK DATE: 04/15/2019

BASIS FOR MONUMENT LOCATION

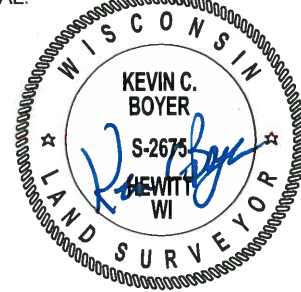
1975 - PLS 1103 RAN EDM/TRANSIT TRAVERSE AROUND SECTIONS 22, 23, AND 24 AND TIED INTO TRAVERSE AROUND SECTION 27. EXCAVATION WITH BACKHOE YIELDED NO EVIDENCE OF THE ORIGINAL CORNER OR ANY REMONUMENTATION. SET CORNER IN CENTER OF DUCK CREEK AVE AND OPPOSITE SUBSTANTIAL FENCE LINE TO THE NORTH AND SOUTH. LOCATION FITS ORIGINAL DIMENSIONS WELL.

2019 - PLS 2675 FOUND HARRISON 2" BELOW THE ROAD SURFACE AND 1 TIE. THE MONUMENT AGREES WITH THE EXISTING TIE. ACCEPTED THE HARRISON AS THE CORNER LOCATION. SET 4 NEW TIES AND MEASURED TO THE EXISTING TIE.



LOCATION
(INDICATE CORNER BY "X")

SEAL:



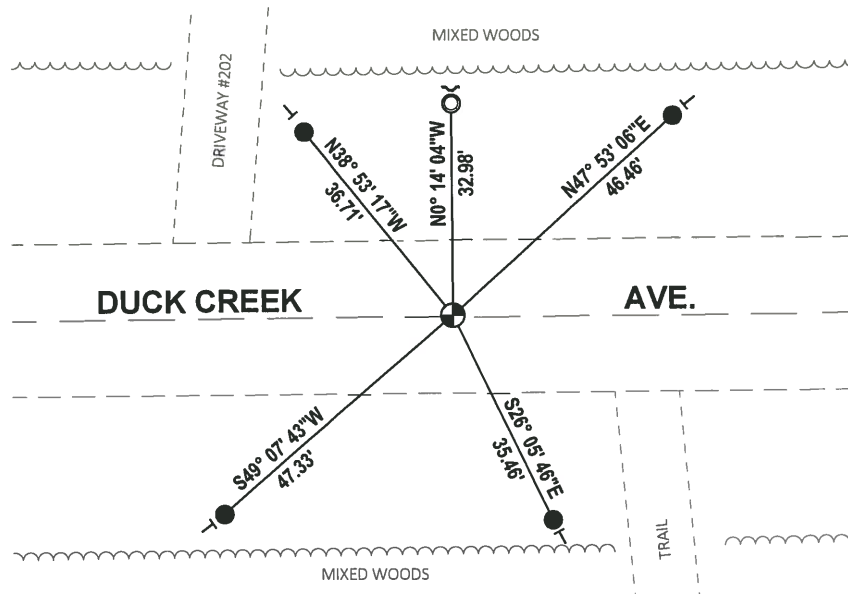
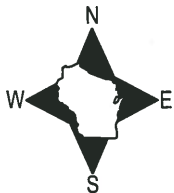
DATA SHOWN HERE ON THIS TIE SHEET IS CORRECT AND COMPLETE TO THE BEST OF MY KNOWLEDGE AND BELIEF.

PROFESSIONAL LAND SURVEYOR

DATE 5/1/19

TIE SKETCH

NOTE: THE CORNER FALLS ON THE CENTERLINE OF DUCK CREEK AVE.



- SET 3/4" x 18" IRON REBAR, 1.50#/FT
- FOUND 1-1/4" O.D. IRON PIPE
- ⊕ FOUND HARRISON MONUMENT
- ┌ STEEL FENCE POST
- └ VINYL "T" POST

ADAMS COUNTY

Survey Monument Record

TYPE OF MONUMENT: Standard Harrison

STATE PLANE COORDINATES: N _____

E _____

ELEVATION — M.S.L. DATUM: _____

THETA ANGLE: _____

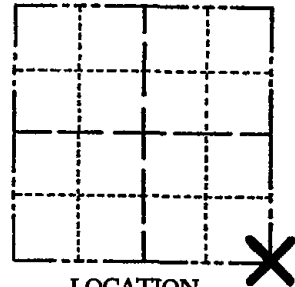
FIELD BOOK: _____ PAGE _____

CORNER NO. 780

SECTION 23

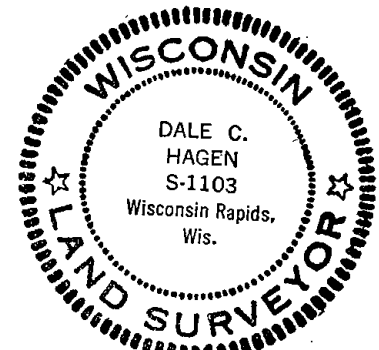
TOWN 17

RANGE 7



LOCATION
(Indicated by 'X')

SEAL:



CERTIFIED CORRECT:
Dale C Hagen
 Registered Land Surveyor
 DATE: August 7, 1975

BASIS FOR MONUMENT LOCATION

(Use reverse side if necessary)

Show info such as: History of corner, with reference to Vol. and pg, dates, surveyor; exact description of monument replaced; if location computed, by taped or EDM traverse; landowner remarks, etc.

Ran EDM/transit traverse around Sections 22, 23 and 24 and tied into traverse around Section 27.

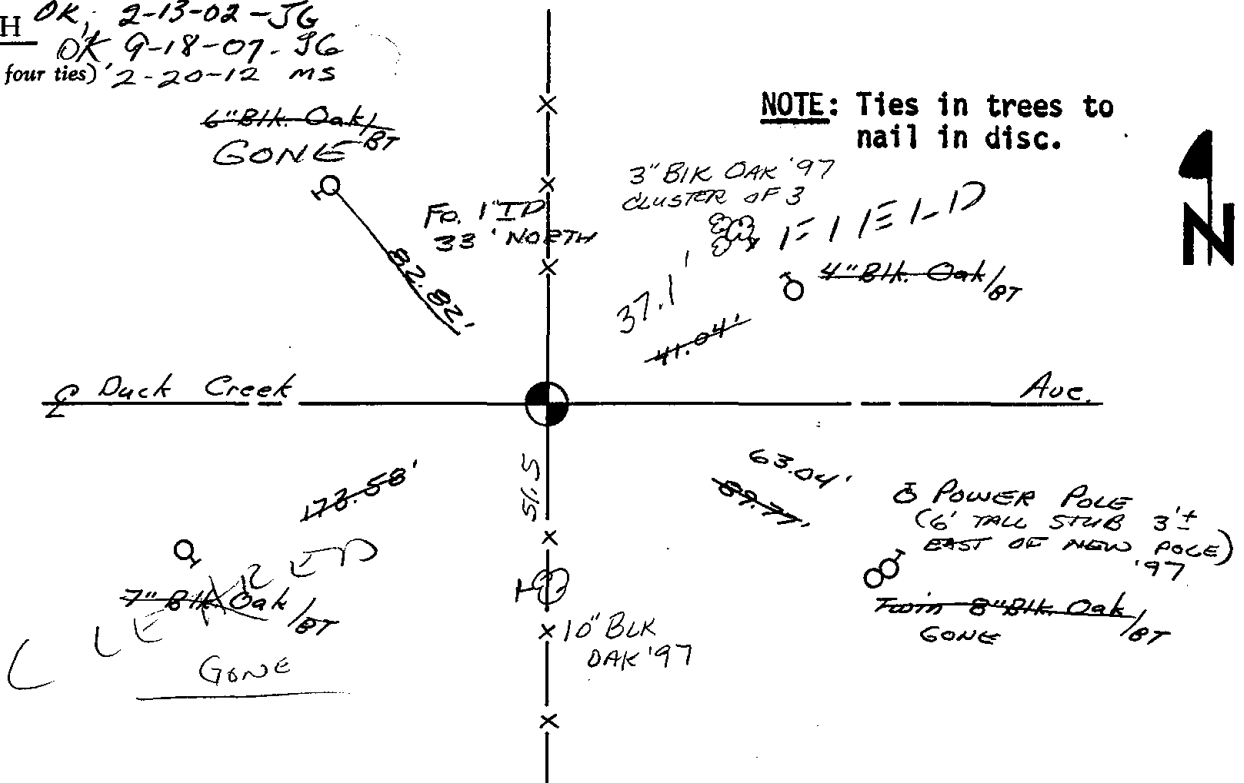
Excavation with backhoe yielded no evidence of the original corner or any remonumentation.

Set corner in center of Duck Creek Avenue and opposite substantial fenceline to the North and South. Location fits original dimensions well.

| | | | |
|------------|------|----------|-------|
| CORNER | O.K. | 3-28-77 | GR-SS |
| " | " | 5-26-82 | PK-SS |
| " | " | 1-6-87 | C12 |
| " | " | 12-12-91 | KZ-JG |
| 2 NEW TIES | | 2-19-97 | JG-SS |

TIE SKETCH

OK: 2-13-02-JG
 OK 9-18-07-JG
 (Show at least four ties) 2-20-12 MS



NOTE: Ties in trees to nail in disc.

