

24
SECTION

17
TOWN

07
RANGE

ADAMS COUNTY

COUNTY CORNER NO: 92
ROMPORTOL ID: 41707240020

PUBLIC LAND SURVEY MONUMENT RECORD

TYPE OF MONUMENT: HARRISON
ADAMS COUNTY COORDINATES, NAD 83 (2007)

N. 203153.872

E. 586389.813

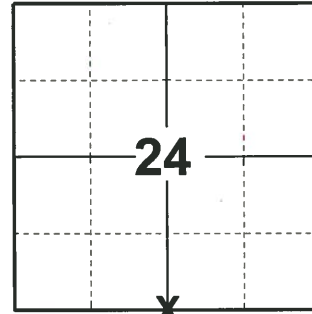
ELEVATION- - - - - DATUM - - - - -

FIELD WORK DATE: 04/15/2019

BASIS FOR MONUMENT LOCATION

1976 - PLS 1103 RAN EDM/ TRANSIT TRAVERSE AROUND SECTION 22, 23, 24, AND PORTIONS ON THE ADJOINING SECTION TO DETERMINE THE SEARCH AREAS FOR INVESTIGATION. EXCAVATION WITH BACKHOE YIELDED NO EVIDENCE OF THE ORIGINAL CORNER OR ANY REMONUMENTATION. SET CORNER EQUIDISTANT AND ON LINE BETWEEN ADJACENT SECTION CORNERS.

2019 - PLS 2675 FOUND HARRISON 2" BELOW THE ROAD SURFACE AND 1 TIE. THE MONUMENT AGREES WITH THE EXISTING TIE. ACCEPTED THE HARRISON AS THE CORNER LOCATION. SET 3 NEW TIES AND MEASURED TO THE EXISTING TIE.



LOCATION
(INDICATE CORNER BY "X")

SEAL:



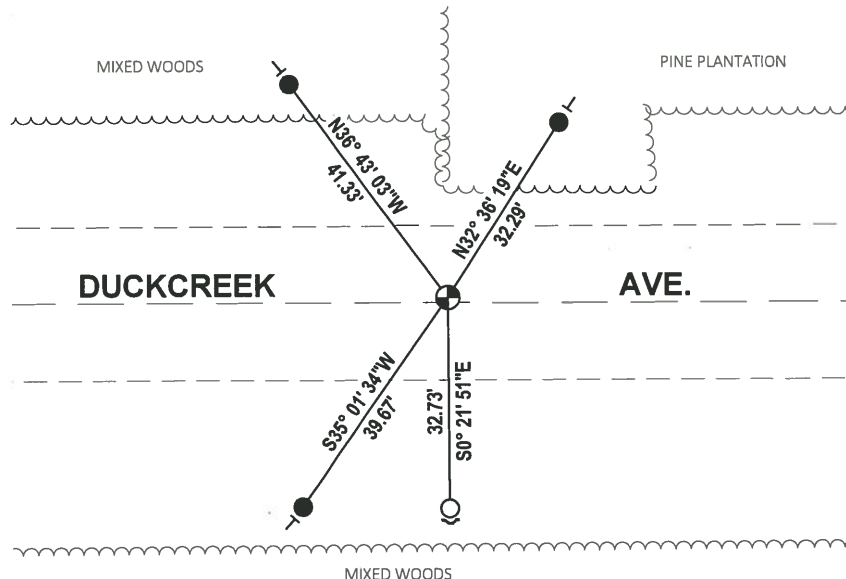
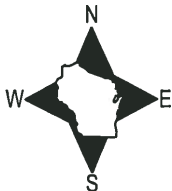
DATA SHOWN HERE ON THIS TIE SHEET IS CORRECT AND COMPLETE TO THE BEST OF MY KNOWLEDGE AND BELIEF.

PROFESSIONAL LAND SURVEYOR

DATE 5/1/19

TIE SKETCH

NOTE: THE CORNER FALLS ON THE CENTERLINE OF DUCKCREEK AVE.



- SET 3/4" x 18" IRON REBAR, 1.50#/FT
- FOUND 3/4" IRON ROD
- ⊕ FOUND HARRISON MONUMENT
- ✓ STEEL FENCE POST
- ┌ VINYL "T" POST

ADAMS COUNTY

Survey Monument Record

Standard Harrison

TYPE OF MONUMENT: _____

STATE PLANE COORDINATES: N _____

E _____

ELEVATION — M.S.L. DATUM: _____

THETA ANGLE: _____

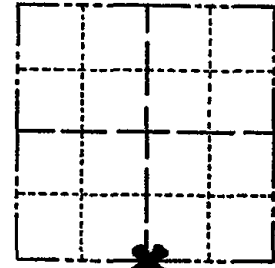
FIELD BOOK: _____ PAGE _____

CORNER NO. 937

SECTION 24

TOWN 17

RANGE 7



LOCATION
(Indicated by 'X')

SEAL:

BASIS FOR MONUMENT LOCATION

(Use reverse side if necessary)

Show info such as: History of corner, with reference to Vol. and pg, dates, surveyor; exact description of monument replaced; if location computed, by taped or EDM traverse; landowner remarks, etc.

Ran EDM/transit traverse around Sections 22, 23, 24 and portions on the adjoining sections to determine the search areas for investigation.

Excavation with backhoe yielded no evidence of the original corner or any remonumentation.

Set corner equidistant and on line between adjacent Section corners,



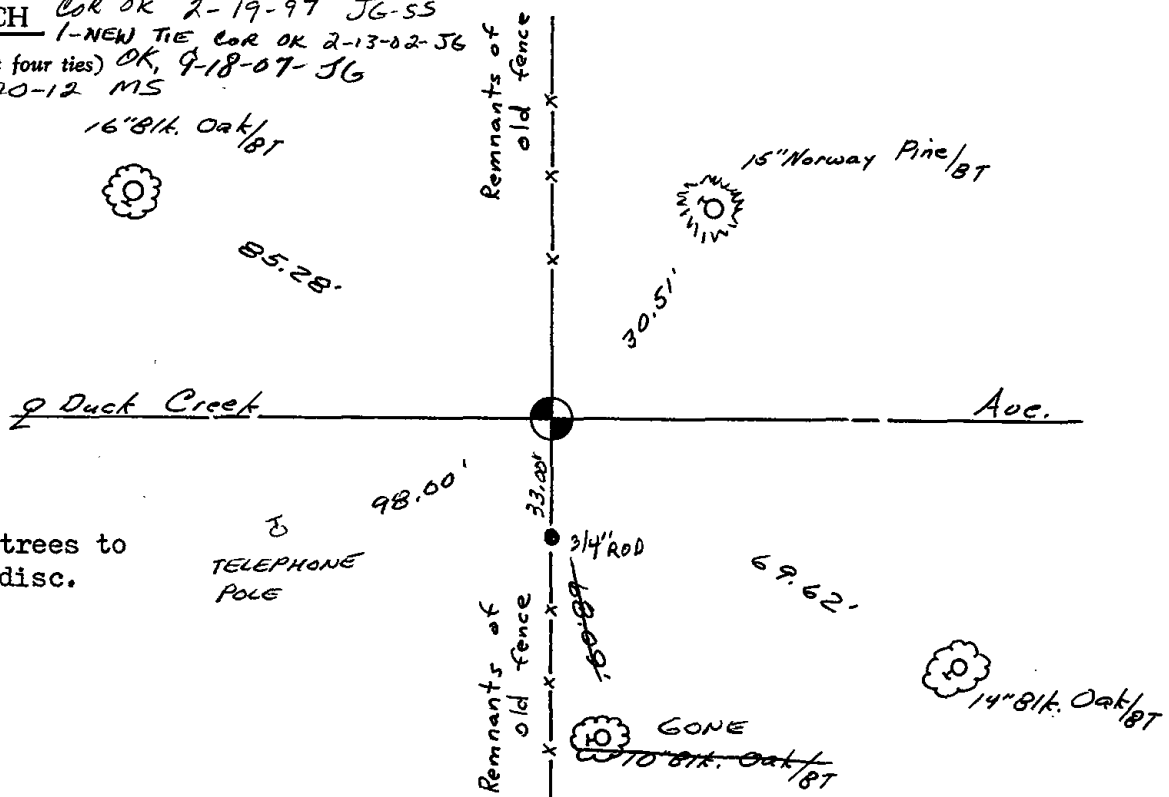
CORNER	O.K.	3-28-77	GR-SS
"	"	5-26-82	PK-SS
"	"	1-22-87	JL-SS
"	"	12-12-91	KZ-JG

CERTIFIED CORRECT:

Dale C. Hagen
Registered Land Surveyor

DATE: January 17, 1976

TIE SKETCH Col OK 2-19-97 JG-SS
1-NEW TIE Cor OK 2-13-02-JG
(Show at least four ties) OK, 9-18-07-JG
OK 2-20-12 MS



NOTE:

Ties in trees to nail in disc.