

PUBLIC LAND SURVEY MONUMENT RECORD

TYPE OF MONUMENT: HARRISON
ADAMS COUNTY COORDINATES, NAD 83 (2007)

N. 200449.320

E. 578480.228

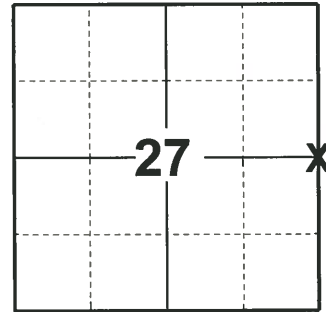
ELEVATION- _____ DATUM _____

FIELD WORK DATE: 04/18/2019

BASIS FOR MONUMENT LOCATION

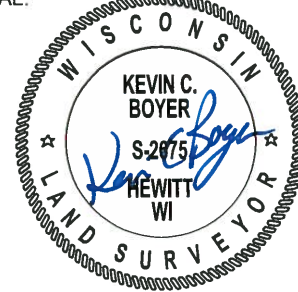
1974 - PLS 1103 DUG WITH BACKHOE FOR EVIDENCE OF CORNER OPPOSITE FENCELINES. FOUND 16"X12"X14" STONE 1' BELOW SURFACE OF COUNTY TRUNK HIGHWAY 'G'. LOWERED STONE AND SET HARRISON MONUMENT ABOVE IT.

2019 - PLS 2675 FOUND HARRISON 6" BELOW THE ROAD SURFACE, 1 TIE, AND 1 WITNESS. THE MONUMENT AGREES WITH THE EXISTING TIE AND WITNESS. ACCEPTED THE HARRISON AS THE CORNER LOCATION. SET 3 NEW TIES AND



LOCATION
(INDICATE CORNER BY "X")

SEAL:



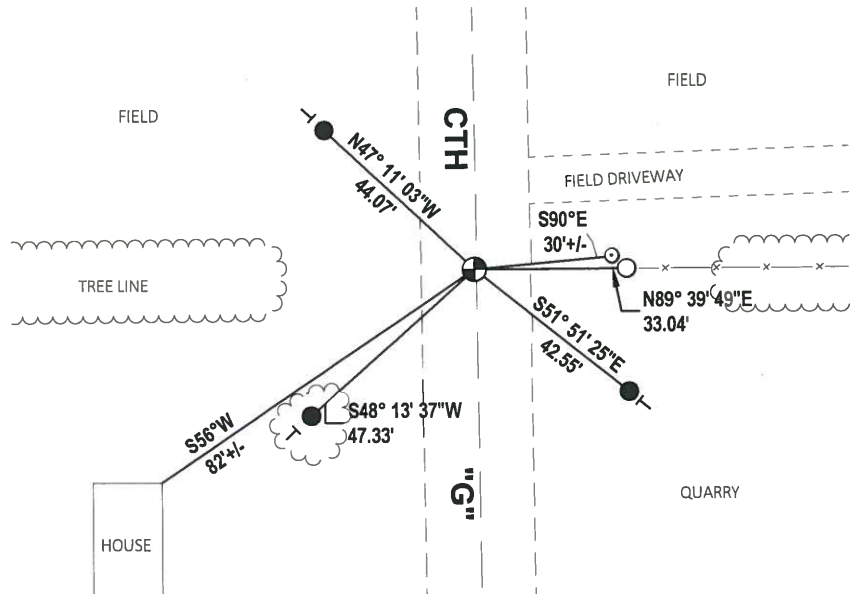
DATA SHOWN HERE ON THIS TIE SHEET IS CORRECT AND COMPLETE TO THE BEST OF MY KNOWLEDGE AND BELIEF.

PROFESSIONAL LAND SURVEYOR

DATE 5/1/19

- TIE SKETCH

NOTE: THE CORNER LANDS 1± WEST OF CTH "G" CENTERLINE.



- SET 3/4" x 18" IRON REBAR, 1.50#/FT
- FOUND 3/4" IRON ROD
- ⊕ FOUND HARRISON MONUMENT
- ⊖ VINYL "T" POST
- ⊙ 6" CHANNEL IRON CORNER POST

ADAMS COUNTY

Survey Monument Record

TYPE OF MONUMENT: STANDARD HARRISON

STATE PLANE COORDINATES: N _____
E _____

ELEVATION — M.S.L. DATUM: _____

THETA ANGLE: _____

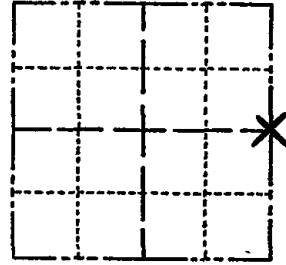
FIELD BOOK: _____ PAGE _____

CORNER NO. 552

SECTION 27

TOWN 17

RANGE 7



BASIS FOR MONUMENT LOCATION

(Use reverse side if necessary)

Show info such as: History of corner, with reference to Vol. and pg, dates, surveyor; exact description of monument replaced; if location computed, by taped or EDM traverse; landowner remarks, etc.

Dug with backhoe for evidence of corner opposite fencelines.

Found 16" x 12" x 14" stone 1 foot below surface of County Trunk Highway 'G'.

Lowered stone and set Harrison Monument above it.

LOCATION
(Indicated by 'X')

SEAL:



CORNER O.K. 3-28-77 GR-SS
" " 8-26-82 PK-SS
" " 1-22-87 JL-SS
" " 1-2-92 GR-JG
TIESDK 1-27-97 LR-JG
1-NEW TIE 2-13-02-JG
OK, 9-17-07-JG

CERTIFIED CORRECT:

Dale C. Hagen
Registered Land Surveyor

DATE: October 16, 1974

OK 2-20-12 MS

TIE SKETCH

(Show at least four ties)

NOTE:

Ties in trees to nail in disc.
Those trees indicated by BT are scribed with BT in blaxe facing the Quarter corner.

