

**ADAMS COUNTY**

**Survey Monument Record**

TYPE OF MONUMENT: Harrison Monument

STATE PLANE COORDINATES: N \_\_\_\_\_  
E \_\_\_\_\_

ELEVATION — M.S.L. DATUM: \_\_\_\_\_

THETA ANGLE: \_\_\_\_\_

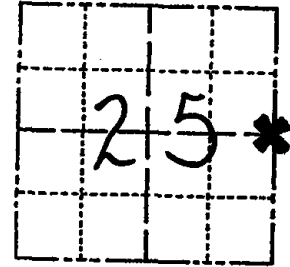
FIELD BOOK: 37 PAGE 37

CORNER NO. 100

SECTION 25

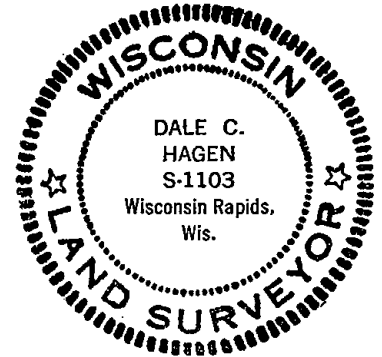
TOWN 17

RANGE 7



LOCATION  
(Indicated by 'X')

SEAL:



**BASIS FOR MONUMENT LOCATION**

(Use reverse side if necessary)

Show info such as: History of corner, with reference to Vol. and pg. dates, surveyor; exact description of monument replaced; if location computed, by taped or EDM traverse; landowner remarks, etc.

Ran EDM/T2 traverse along East line of Sections 25 and 36 to determine search areas.

Investigation yielded no evidence of the original corner or any original bearing trees, or any remonumentation of this corner.

Relocated corner by single proportionate measure between adjacent section corners.

Set Harrison Monument 6-4-76.

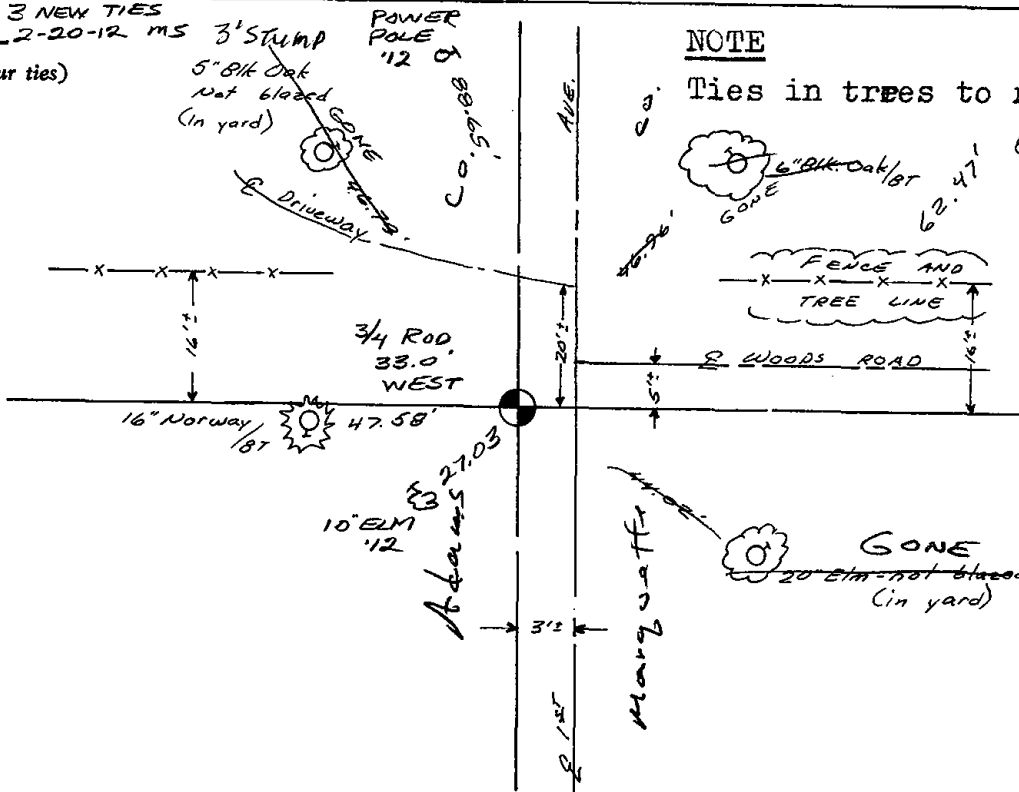
CORNER OK	4-20-82	GR-SS
NEW TIE NE	1-22-87	JL-SS
CORNER OK	12-12-91	KZ-JG
" "	2-19-97	JG-SS
" "	2-13-02	JG
" "	9-18-09	JG

CERTIFIED CORRECT:  
*Dale C Hagen*  
Registered Land Surveyor  
DATE: 7-5-77

**TIE SKETCH**

3 NEW TIES  
2-20-12 ms

(Show at least four ties)



**NOTE**

Ties in trees to nails.