

PUBLIC LAND SURVEY MONUMENT RECORD

TYPE OF MONUMENT: HARRISON
 ADAMS COUNTY COORDINATES, NAD 83 (2007)

N. 197796.780

E. 560017.145

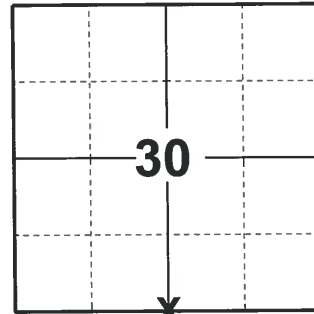
ELEVATION- - - - - DATUM - - - - -

FIELD WORK DATE: 04/24/2019

BASIS FOR MONUMENT LOCATION

1976 - PLS 878 DID NOT EXCAVATE BECAUSE POINT FALLS WITHIN NEW ROAD CONSTRUCTION. NO RECORDS OF RESURVEYS. POINT SET ON LINE IN PROPORTION TO THE ORIGINAL NOTES.

2019 - PLS 2675 FOUND HARRISON 2" BELOW THE ROAD SURFACE AND 1 TIE. THE MONUMENT AGREES WITH THE EXISTING TIE. ACCEPTED THE HARRISON AS THE CORNER LOCATION. SET 3 NEW TIES AND MEASURED TO THE EXISTING TIE.



LOCATION
 (INDICATE CORNER BY "X")

SEAL:



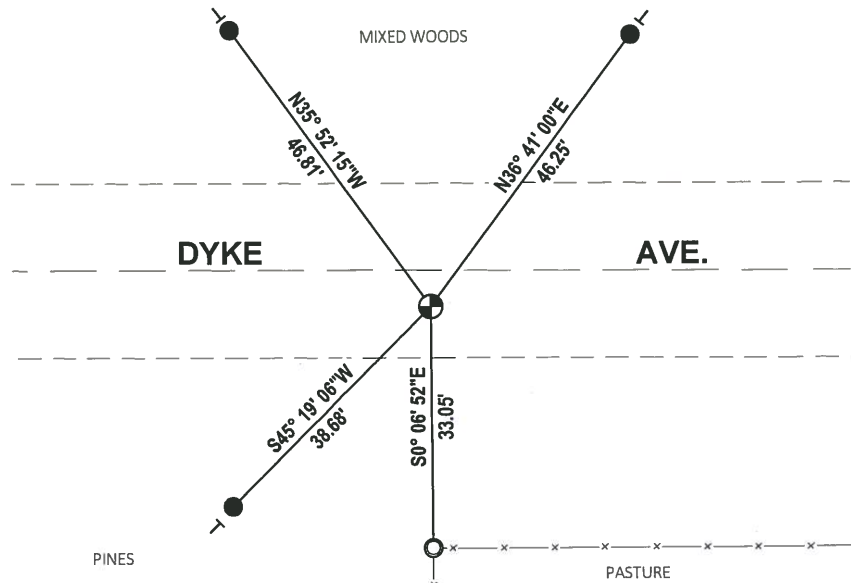
DATA SHOWN HERE ON THIS TIE SHEET IS CORRECT AND COMPLETE TO THE BEST OF MY KNOWLEDGE AND BELIEF.

PROFESSIONAL LAND SURVEYOR

DATE 5/1/19

- TIE SKETCH

NOTE: THE CORNER LANDS 5± SOUTH OF DYKE AVE. CENTERLINE.



- SET 3/4" x 18" IRON REBAR, 1.50#/FT
- FOUND 1-1/4" O.D. IRON PIPE
- ⊕ FOUND HARRISON MONUMENT
- VINYL "T" POST

ADAMS COUNTY

Survey Monument Record

TYPE OF MONUMENT: Harrison standard

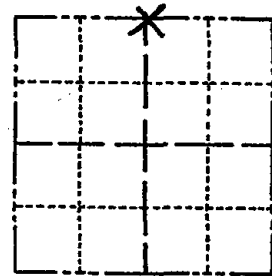
STATE PLANE COORDINATES: N _____
E _____

ELEVATION — M.S.L. DATUM: _____

THETA ANGLE: _____

FIELD BOOK: file PAGE _____

CORNER NO. 861 ⁽¹⁰²⁾
SECTION 31
TOWN 17
RANGE 7



LOCATION
(Indicated by 'X')

SEAL:

BASIS FOR MONUMENT LOCATION

(Use reverse side if necessary)

Show info such as: History of corner, with reference to Vol. and pg, dates, surveyor; exact description of monument replaced; if location computed, by taped or EDM traverse; landowner remarks, etc.

Did not excavate because point falls within new road construction. No records of resurveys. Point set on line in proportion to the original notes.



CORNER	O.K.	3-15-77	GR-55
"	"	8-2-82	PK-55
"	"	1-22-87	JL-55
"	"	7-20-92	JG
TIES	OK	1-29-97	CR

CERTIFIED CORRECT:

Anthony B. Kiedrowski
Registered Land Surveyor

DATE: 1/23/76

TIE SKETCH 1-NEW TIE, 2-07-02-JB
OK 9-13-07-JB

(Show at least four ties) 3-2-12 SS W O G D S

