

29  
SECTION

17  
TOWN

07  
RANGE

# ADAMS COUNTY

COUNTY CORNER NO: 104

ROMPORTOL ID: 41707290020

## PUBLIC LAND SURVEY MONUMENT RECORD

TYPE OF MONUMENT: HARRISON (BROKEN-TOP)  
ADAMS COUNTY COORDINATES, NAD 83 (2007)

N. 197798.142

E. 565301.937

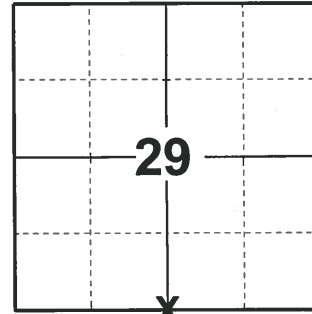
ELEVATION- \_\_\_\_\_ DATUM \_\_\_\_\_

FIELD WORK DATE: 04/23/2019

### BASIS FOR MONUMENT LOCATION

1982 - PLS 878 EXCAVATED WITH A BACKHOE, FOUND NO TRACE OF ORIGINAL CORNER OR ANY RESURVEY CORNER. SET CORNER EQUIDISTANT AND ON LINE BETWEEN SECTION CORNERS.

2019 - PLS 2675 FOUND HARRISON (BROKEN-TOP) 2" BELOW THE ROAD SURFACE AND 3 WITNESSES. THE MONUMENT AGREES WITH ALL 3 WITNESSES. ACCEPTED THE HARRISON (BROKEN-TOP) AS THE CORNER LOCATION. SET 4 NEW TIES AND MEASURED TO THE EXISTING WITNESSES.



LOCATION  
(INDICATE CORNER BY "X")

SEAL:



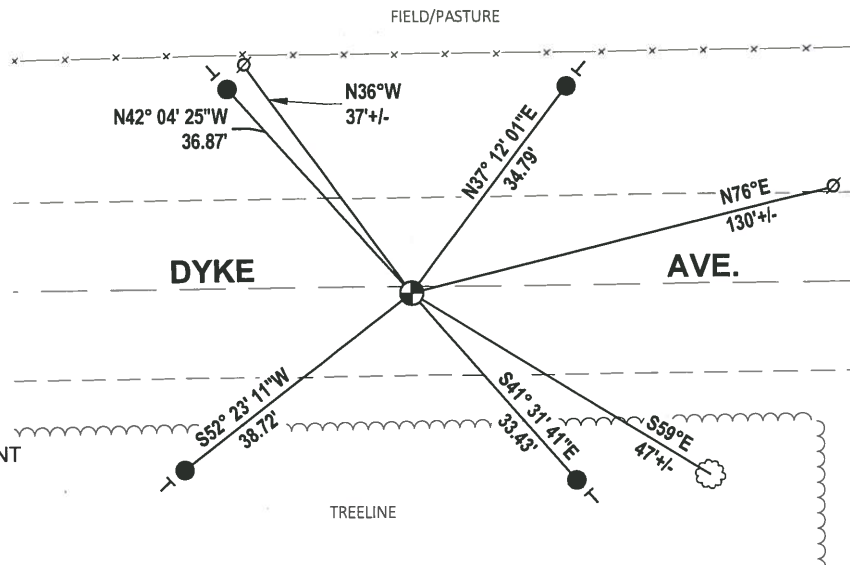
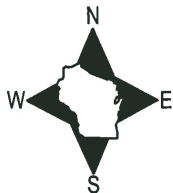
DATA SHOWN HERE ON THIS TIE SHEET IS CORRECT AND COMPLETE TO THE BEST OF MY KNOWLEDGE AND BELIEF.

PROFESSIONAL LAND SURVEYOR

DATE 5/1/19

### TIE SKETCH

NOTE: THE CORNER LANDS 1± SOUTH OF DYKE AVE. CENTERLINE.



- SET 3/4" x 18" IRON REBAR, 1.50#/FT
- ⊕ FOUND HARRISON (BROKEN-TOP) MONUMENT
- ⊙ WITNESS POWER POLE
- ┌ VINYL "T" POST
- ⊗ WITNESS TREE

# Government Land Corner Certificate

ADAMS County

CORNER NO. 104  
 SECTION 32  
 TOWN 17  
 RANGE 7

TYPE OF MONUMENT: HARRISON

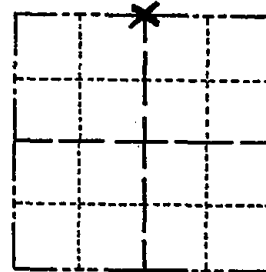
STATE PLANE COORDINATES: N \_\_\_\_\_  
 E \_\_\_\_\_

ELEVATION — M.S.L. DATUM: \_\_\_\_\_

THETA ANGLE: \_\_\_\_\_

FIELD BOOK: 92 (163) PAGE 65 (E)

DRAWN BY: LANCE HARECK

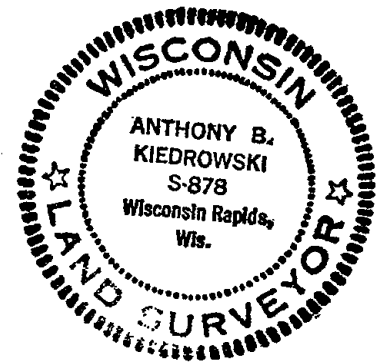


LOCATION  
(Indicated by 'X')

## BASIS FOR MONUMENT LOCATION

Show info such as: History of corner, with reference to Vol. and pg., dates, surveyor; exact description of monument replaced; if location computed, by taped or EDM traverse; landowner remarks, etc. (Use reverse side if necessary)

SEAL:



Excavated with backhoe, found no trace of original corner or any resurvey corner. Set corner equidistant and on line between Section corners.

DATA SHOWN HERE ON  
CERTIFIED CORRECT:

*Anthony B. Kiedrowski*  
Registered Land Surveyor

DATE: 5-7-82

## TIE SKETCH

Show at least four ties, also fence lines, roads, topo, size and type of witness trees and if off road - best way to arrive at corner.

