

PUBLIC LAND SURVEY MONUMENT RECORD

TYPE OF MONUMENT: HARRISON
ADAMS COUNTY COORDINATES, NAD 83 (2007)

N. 197807.093

E. 567940.824

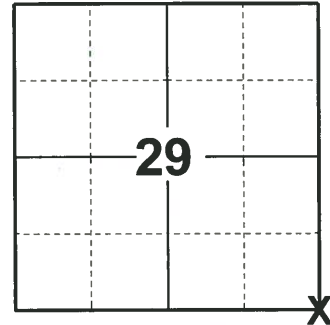
ELEVATION- _____ DATUM _____

FIELD WORK DATE: 04/23/2019

BASIS FOR MONUMENT LOCATION

1982 - PLS 878 NO RECORD OF ANY RESURVEYS. EXCAVATED WITH BACKHOE, FOUND 6"X9" SQUARE X19" LONG GRANITE DUG-IN STONE. LOWERED STONE AND SET HARRISON ON TOP.

2019 - PLS 2675 FOUND HARRISON 4" BELOW THE ROAD SURFACE, 1 TIE AND 1 WITNESS. THE MONUMENT AGREES WITH BOTH THE TIE AND WITNESS. ACCEPTED THE HARRISON AS THE CORNER LOCATION. SET 1 NEW TIE AND MEASURED TO A FOUND CONTROL POINT, 2 PROPERTY IRONS, AND THE EXISTING TIE AND WITNESS.



LOCATION
(INDICATE CORNER BY "X")

SEAL:



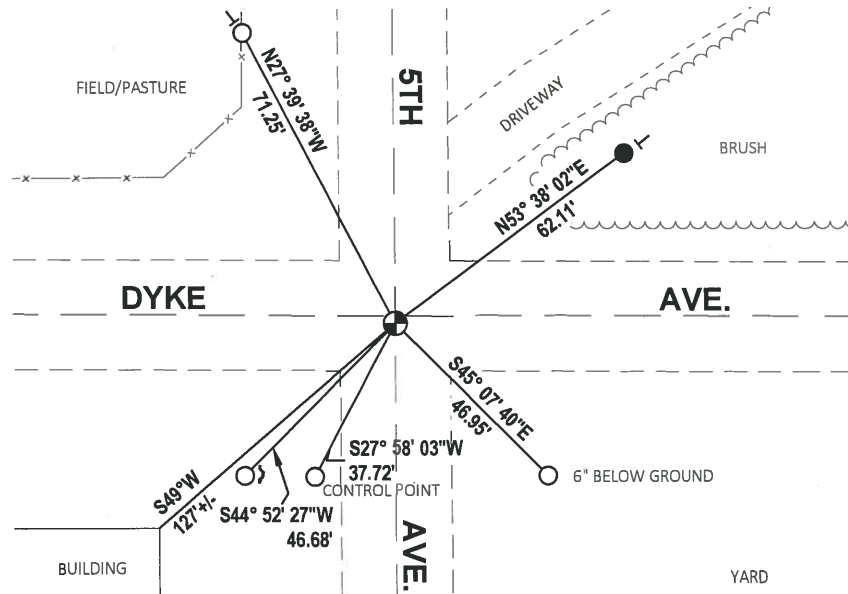
DATA SHOWN HERE ON THIS TIE SHEET IS CORRECT AND COMPLETE TO THE BEST OF MY KNOWLEDGE AND BELIEF.

PROFESSIONAL LAND SURVEYOR

DATE 5/11/19

TIE SKETCH

NOTE: THE CORNER LANDS 2± SOUTH OF DYKE AVE. CENTERLINE AND ON 5TH AVE CENTERLINE.

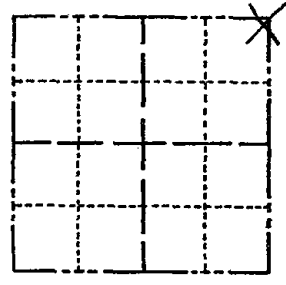


- SET 3/4" x 18" IRON REBAR, 1.50#/FT
- FOUND 3/4" IRON ROD
- ⊕ FOUND HARRISON MONUMENT
- ↗ STEEL FENCE POST
- ↖ VINYL "T" POST

Government Land Corner Certificate

ADAMS County
 TYPE OF MONUMENT: HARRISON
 STATE PLANE COORDINATES: N _____
 E _____
 ELEVATION — M.S.L. DATUM: _____
 THETA ANGLE: _____
 FIELD BOOK: 92 (103) PAGE 65 (6)
 DRAWN BY: SSH

CORNER NO. 105
 SECTION 32
 TOWN 17
 RANGE 7



BASIS FOR MONUMENT LOCATION

Show info such as: History of corner, with reference to Vol. and pg., dates, surveyor; exact description of monument replaced; if location computed, by taped or EDM traverse; landowner remarks, etc. (Use reverse side if necessary)

No record of any resurveys. Excavated with backhoe, found 6"x9" square x 19" long granite dug-in stone. Lowered stone and set Harrison on top.

5/29/62 - ADDED TIES PRIOR TO INT. RECONSTRUCTION. REMOVED MON. TO BE REPLACED, 6 PR

MONUMENT RESET 06-04-02

SEAL:



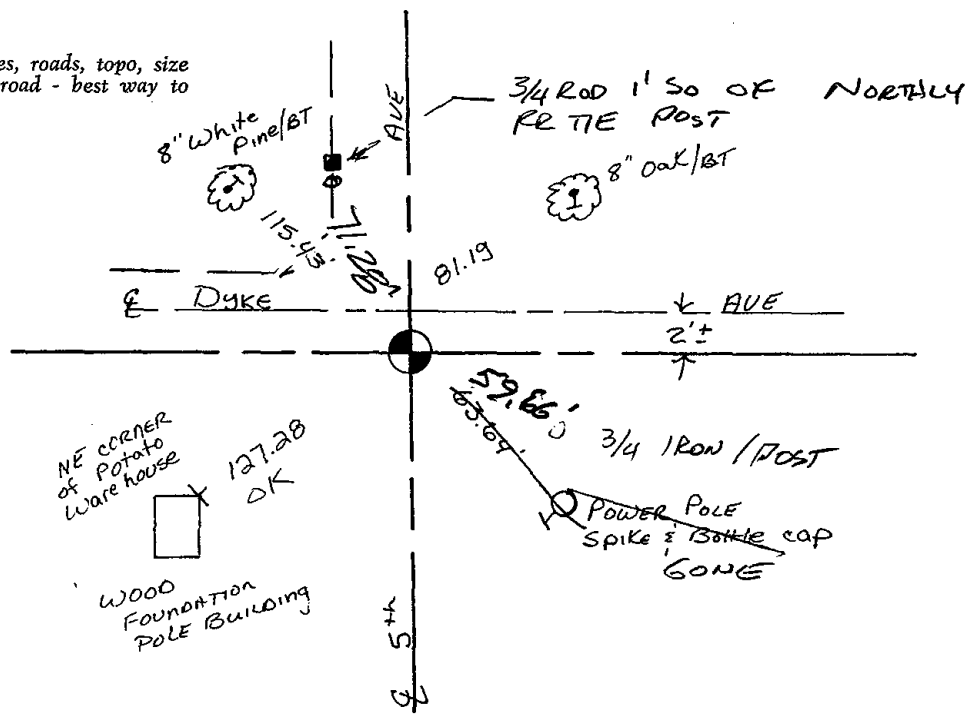
DATA SHOWN HERE ON CERTIFIED CORRECT:

Anthony B. Kiedrowski
 Registered Land Surveyor

DATE: 5-7-82

TIE SKETCH

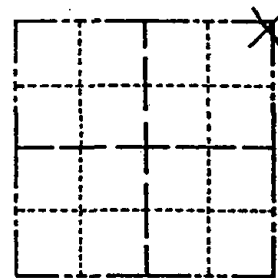
Show at least four ties, also fence lines, roads, topo, size and type of witness trees and if off road - best way to arrive at corner.



Government Land Corner Certificate

ADAMS County
 TYPE OF MONUMENT: HARRISON
 STATE PLANE COORDINATES: N _____
 E _____
 ELEVATION — M.S.L. DATUM: _____
 THETA ANGLE: _____
 FIELD BOOK: 92 (103) PAGE 65 (6)
 DRAWN BY: SMH

CORNER NO. 105
 SECTION 32
 TOWN 17
 RANGE 7



LOCATION
(Indicated by 'X')

BASIS FOR MONUMENT LOCATION

Show info such as: History of corner, with reference to Vol. and pg., dates, surveyor; exact description of monument replaced; if location computed, by taped or EDM traverse; landowner remarks, etc. (Use reverse side if necessary)

No record of any resurveys. Excavated with backhoe, found 6"x9" square x 19" long granite dug-in stone. Lowered stone and set Harrison on top.

5/29/02 - ADDED TIES PRIOR TO INT. RECONSTRUCTION. REMOVED MON. TO BE REPLACED, 6 PR

RESET HARRISON 6/4/02
 ADDED NEW TIES JG-SS

SEAL:



DATA SHOWN HERE ON CERTIFIED CORRECT:

Anthony B. Kiedrowski
 Registered Land Surveyor

DATE: 5-7-82

TIE SKETCH

Show at least four ties, also fence lines, roads, topo, size and type of witness trees and if off road - best way to arrive at corner.

