

## PUBLIC LAND SURVEY MONUMENT RECORD

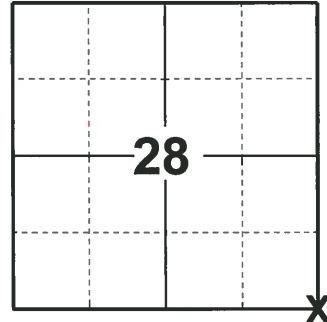
TYPE OF MONUMENT: HARRISON  
 ADAMS COUNTY COORDINATES, NAD 83 (2007)

N. 197791.011

E. 573224.725

ELEVATION- \_\_\_\_\_ DATUM \_\_\_\_\_

FIELD WORK DATE: 04/22/2019



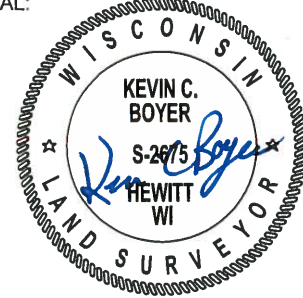
**LOCATION**  
 (INDICATE CORNER BY "X")

### BASIS FOR MONUMENT LOCATION

1974 - PLS 1103 RAN EDM/TRANSIT TRAVERSE OF SECTION 34 AND ADJACENT SECTIONS. DID NOT EXCAVATE BECAUSE SEARCH AREA FELL IN AREA OF ROAD RECONSTRUCTION. AFTER ANALYSIS OF THE ORIGINAL NOTES AND FIELD EVIDENCE. THE CORNER WAS SET.

2019 - PLS 2675 FOUND HARRISON 4" BELOW THE ROAD SURFACE AND 2 WITNESSES. THE MONUMENT AGREES WITH BOTH WITNESSES. ACCEPTED THE HARRISON AS THE CORNER LOCATION. SET 4 NEW TIES AND MEASURED TO THE EXISTING WITNESSES.

SEAL:



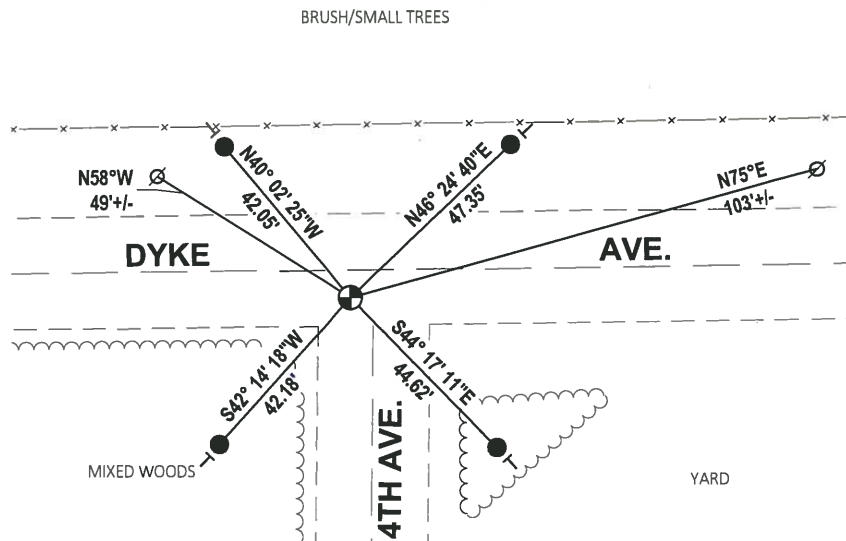
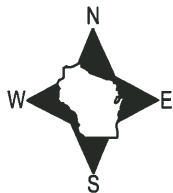
DATA SHOWN HERE ON THIS TIE SHEET IS CORRECT AND COMPLETE TO THE BEST OF MY KNOWLEDGE AND BELIEF.

PROFESSIONAL LAND SURVEYOR

DATE 5/1/19

### TIE SKETCH

NOTE: THE CORNER LANDS 6'± SOUTH OF DYKE AVE. CENTERLINE AND 5'± WEST OF 4TH AVE. CENTERLINE.



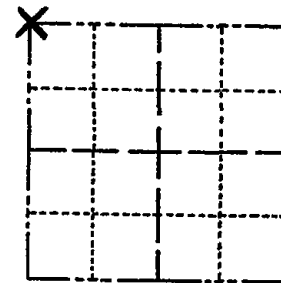
- SET 3/4" x 18" IRON REBAR, 1.50#/FT
- ⊕ FOUND HARRISON MONUMENT
- ∅ WITNESS POWER POLE
- ┌ VINYL "T" POST

# ADAMS COUNTY

## Survey Monument Record

CORNER NO. 566  
 SECTION 34  
 TOWN 17  
 RANGE 7

TYPE OF MONUMENT: Standard Harrison  
 STATE PLANE COORDINATES: N \_\_\_\_\_  
 E \_\_\_\_\_  
 ELEVATION — M.S.L. DATUM: \_\_\_\_\_  
 THETA ANGLE: \_\_\_\_\_  
 FIELD BOOK: \_\_\_\_\_ PAGE \_\_\_\_\_



LOCATION  
(Indicated by 'X')

SEAL:



CERTIFIED CORRECT:

*Dale C. Hagen*  
 Registered Land Surveyor

DATE: October 2, 1974

### BASIS FOR MONUMENT LOCATION

(Use reverse side if necessary)

Show info such as: History of corner, with reference to Vol. and pg, dates, surveyor; exact description of monument replaced; if location computed, by taped or EDM traverse; landowner remarks, etc.

Ran EDM/transit traverse of Section 34 and adjacent sections.

Did not excavate because search area fell in area of road reconstruction.

After analysis of the original notes and field evidence, the corner was set.

CORNER O.K. 3-15-77 GR-SS  
 " " 5-26-82 PK-SS  
 " " 12-15-86 CR  
 " " 12-12-91 KZ-JG  
 TIES OK 1-29-97 CR-JG

### TIE SKETCH

OK 2-07-02-JG  
 1-GONE, 4-LEFT, 9-17-07-JG

(Show at least four ties) 2 NEW TIES MS-ML 01-16-12  
 NOTE

Ties in trees to nail in disc. 18" BIA Oak 1 BT  
 85.58'

