

## PUBLIC LAND SURVEY MONUMENT RECORD

TYPE OF MONUMENT: HARRISON  
ADAMS COUNTY COORDINATES, NAD 83 (2007)

N. 197812.521

E. 575861.124

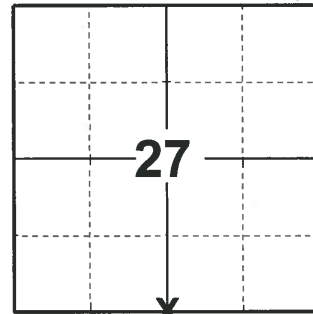
ELEVATION-      DATUM     

FIELD WORK DATE: 04/18/2019

### BASIS FOR MONUMENT LOCATION

1974 - PLS 1103 RAN EDM/TRANSIT TRAVERSE AROUND SECTION 34 AND ADJACENT SECTIONS. EXCAVATED WITH BACKHOE IN SEARCH AREA BUT COULD FIND NO EVIDENCE OF THE ORIGINAL CORNER OR ANY SUBSEQUENT REMONUMENTATION. SET CORNER BY SINGLE PROPORTIONATE METHOD BETWEEN THE NORTHWEST AND NORTHEAST SECTION CORNERS.

2019 - PLS 2675 FOUND HARRISON FLUSH WITH THE ROAD SURFACE, 1 TIE AND 1 WITNESS. ACCEPTED THE HARRISON AS THE CORNER LOCATION. SET 4 NEW TIES AND MEASURED TO THE EXISTING TIE AND WITNESS.



**LOCATION**  
(INDICATE CORNER BY "X")

SEAL:



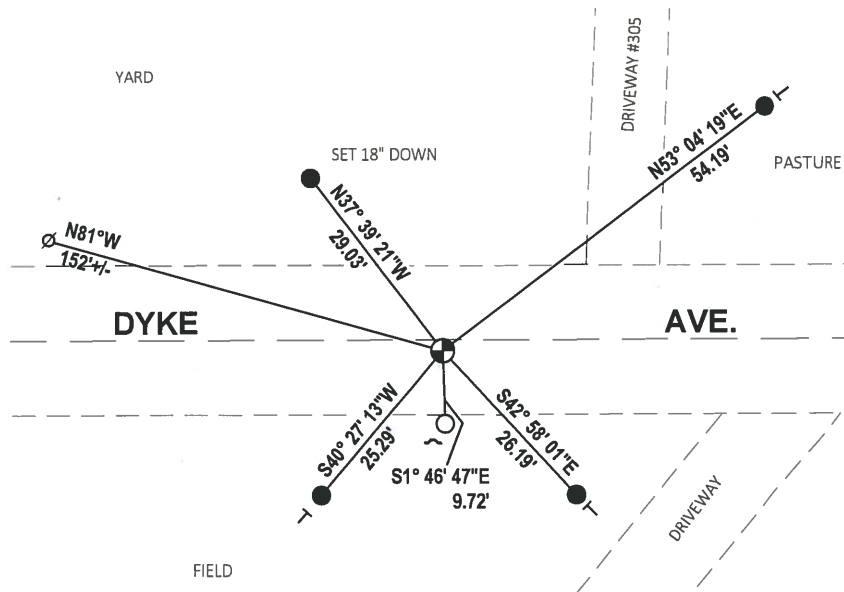
DATA SHOWN HERE ON THIS TIE SHEET IS CORRECT AND COMPLETE TO THE BEST OF MY KNOWLEDGE AND BELIEF.

PROFESSIONAL LAND SURVEYOR

DATE 5/1/19

### - TIE SKETCH

NOTE: THE CORNER LANDS 1.5± SOUTH OF DYKE AVE. CENTERLINE.



- SET 3/4" x 18" IRON REBAR, 1.50#/FT
- FOUND 3/4" IRON ROD
- ⊕ FOUND HARRISON MONUMENT
- ∅ WITNESS POWER POLE
- ↗ STEEL FENCE POST
- └ VINYL "T" POST

**ADAMS COUNTY**

**Survey Monument Record**

TYPE OF MONUMENT: Standard Harrison

STATE PLANE COORDINATES: N \_\_\_\_\_  
E \_\_\_\_\_

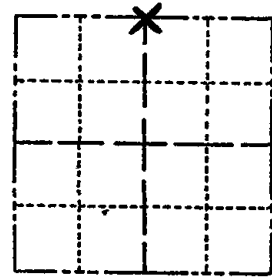
ELEVATION — M.S.L. DATUM: \_\_\_\_\_

THETA ANGLE: \_\_\_\_\_

FIELD BOOK: \_\_\_\_\_ PAGE \_\_\_\_\_

554 (108)  
~~567~~

CORNER NO. \_\_\_\_\_  
SECTION 34  
TOWN 17  
RANGE 7



LOCATION  
(Indicated by 'X')

SEAL:

**BASIS FOR MONUMENT LOCATION**

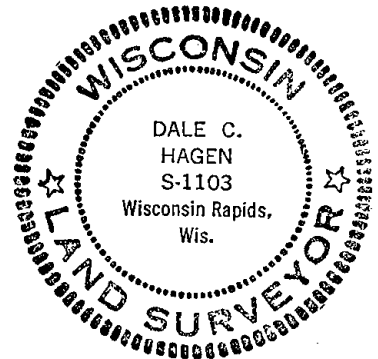
(Use reverse side if necessary)

Show info such as: History of corner, with reference to Vol. and pg, dates, surveyor; exact description of monument replaced; if location computed, by taped or EDM traverse; landowner remarks, etc.

Run EDM/transit traverse around Section 34 and adjacent sections.

Excavated with back-hoe in search area but could find no evidence of the original corner or any subsequent remonumentation.

Set corner by single proportionate method between the Northwest and Northeast section corners.



CERTIFIED CORRECT:

*Dale C. Hagen*  
Registered Land Surveyor

DATE: October 2, 1974

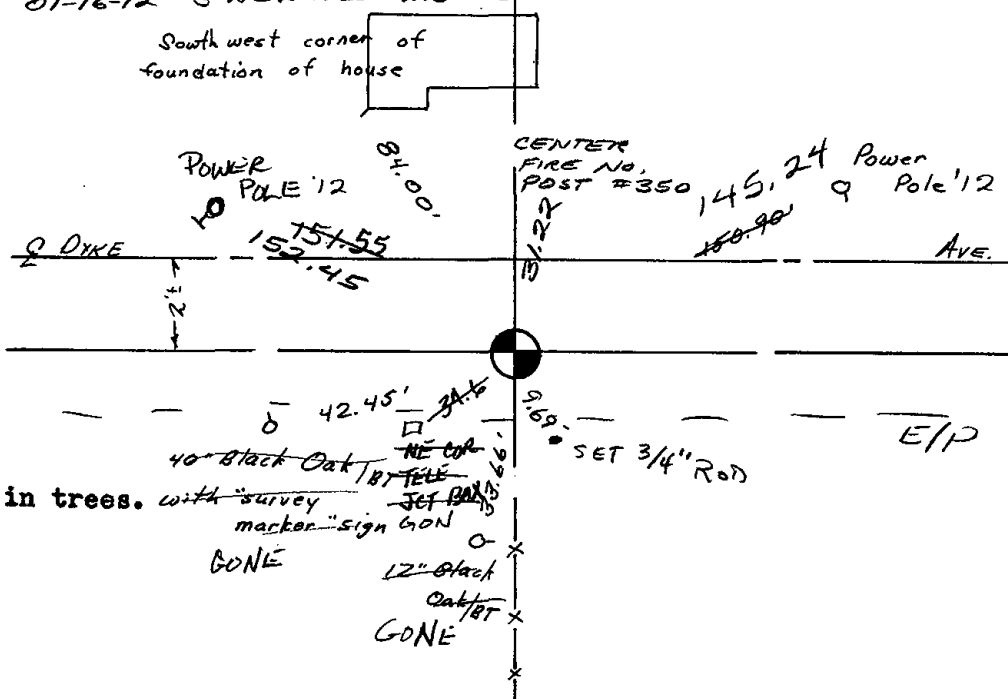
CORNER O.K. 3-28-77 GR-SS  
" " 5-26-82 PK-SS  
12-15-86 GR OK

2-GONE, 2-NEW 12-12-91 KE-JG

1 TIE GONE/NONE AVAILABLE 1-29-97 CR-JG

**TIE SKETCH** SEE ATTACHED SHEET, SH+BF, 5-26-99

(Show at least four ties) COR OK 2-13-02-JG  
OK 9-17-07-JG  
01-16-12 3 NEW TIES MS-ML



**Note**

Ties to nail in trees. with "survey marker" sign GON  
GONE  
12" black oak BT  
GONE

42.45' SET 3/4" ROD

E/P