

PUBLIC LAND SURVEY MONUMENT RECORD

TYPE OF MONUMENT: HARRISON
 ADAMS COUNTY COORDINATES, NAD 83 (2007)

N. 197808.831

E. 578497.572

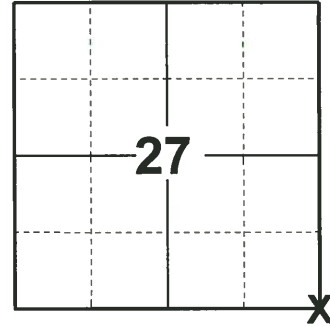
ELEVATION- DATUM

FIELD WORK DATE: 04/18/2019

BASIS FOR MONUMENT LOCATION

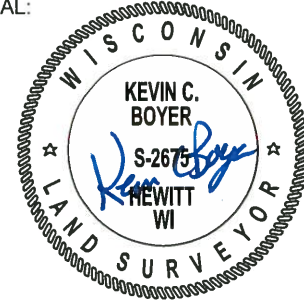
1974 - PLS 1103 EXCAVATION WITH BACKHOE FOUND MANY FIELD STONES. FOUND A SQUARED OFF STONE, 6"X6"X16", TAPERED, WITH A CHISEL LINE IN THE TOP. ALSO, ALONG SIDE OF THIS TAPERED STONE WAS FOUND A YELLOW BRICK PLACED ON END. EXAMINATION OF THE SUBSOIL INDICATED THAT THE STONE AND BRICK HAD BEEN DUG IN PLACE. THE CHISELED STONE WAS REPLACED WITH A STANDARD HARRISON MONUMENT.

2019 - PLS 2675 FOUND HARRISON 6" BELOW THE ROAD SURFACE AND 2 WITNESSES. THE MONUMENT AGREES WITH BOTH WITNESSES. ACCEPTED THE HARRISON AS THE CORNER LOCATION. SET 4 NEW TIES AND MEASURED TO THE EXISTING WITNESSES.



LOCATION
 (INDICATE CORNER BY "X")

SEAL:



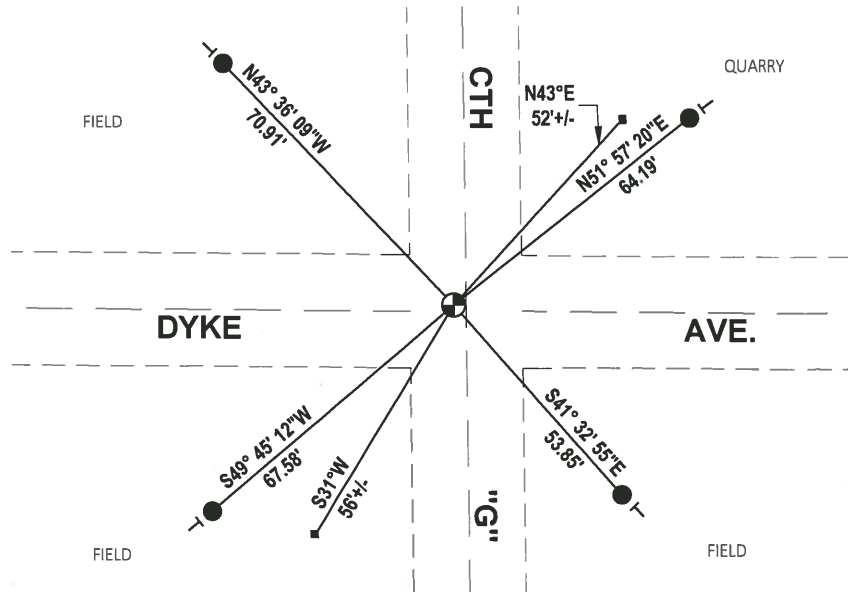
DATA SHOWN HERE ON THIS TIE SHEET IS CORRECT AND COMPLETE TO THE BEST OF MY KNOWLEDGE AND BELIEF.

PROFESSIONAL LAND SURVEYOR

DATE 5/1/19

- TIE SKETCH

NOTE: THE CORNER LANDS 2± WEST OF CTH "G" CENTERLINE AND 1± NORTH OF DYKE AVE. CENTERLINE.



- SET 3/4" x 18" IRON REBAR, 1.50#/FT
- ⊕ FOUND HARRISON MONUMENT
- ┌ VINYL "T" POST
- FOUND RWGP

ADAMS COUNTY

Survey Monument Record

TYPE OF MONUMENT: Standard Harrison Monument

STATE PLANE COORDINATES: N _____
E _____

ELEVATION — M.S.L. DATUM: _____

THETA ANGLE: _____

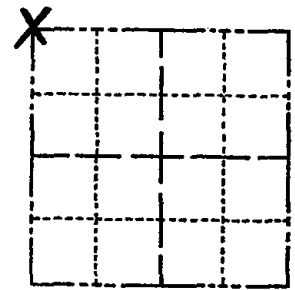
FIELD BOOK: _____ PAGE _____

CORNER NO. 570

SECTION 35

TOWN 17

RANGE 7



LOCATION
(Indicated by 'X')

SEAL:

BASIS FOR MONUMENT LOCATION

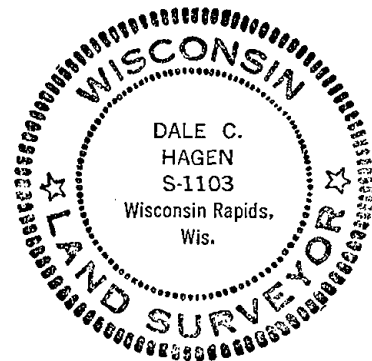
(Use reverse side if necessary)

Show info such as: History of corner, with reference to Vol. and pg, dates, surveyor; exact description of monument replaced; if location computed, by taped or EDM traverse; landowner remarks, etc.

Excavation with Backhoe found many field stones. Found a squared-off stone, 6" by 6" by 16", tapered, with a chisel line in the top. Also, along side of this tapered stone was found a yellow brick placed on end.

Examination of the subsoil indicated that the stone and brick had been dug in place.

The chiseled stone was replaced with a Standard Harrison Monument.



CORNER O.K. 3-28-77 GR-55
" " 5-26-82 PK-55
" " 1-22-87 JL-55
" " 12-12-91 KZ
TIES OK 1-29-97 CR-56

CERTIFIED CORRECT:

Dale C. Hagen
Registered Land Surveyor

DATE: August 19, 1974

TIE SKETCH

SEE ATTACHED SHEET, SH+BF, 5-26-99

(Show at least four ties)

COR OK 2-13-02-36
1-GONE, 4-LEFT, 9-17-07-36
01-16-12 MS-ML

