

26
SECTION

17
TOWN

07
RANGE

ADAMS COUNTY

COUNTY CORNER NO: 111

ROMPORTOL ID: 41707260000

PUBLIC LAND SURVEY MONUMENT RECORD

TYPE OF MONUMENT: HARRISON
ADAMS COUNTY COORDINATES, NAD 83 (2007)

N. 197812.773

E. 583757.310

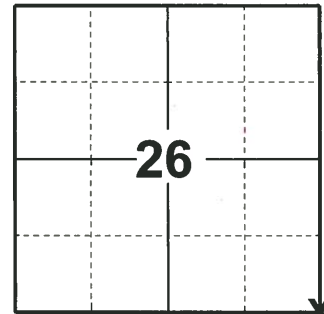
ELEVATION- - - - - DATUM - - - - -

FIELD WORK DATE: 04/17/2019

BASIS FOR MONUMENT LOCATION

1974 - PLS 1103 RAN EDM/TRANSIT TRAVERSE AROUND SECTION 35 AND ADJACENT SECTIONS. DID NOT EXCAVATE BECAUSE SEARCH AREA FELL IN A CUT SECTION OF THE ROAD. ESTABLISHED CORNER BY DOUBLING OVER THE DISTANCE AND LINE OF THE NORTH LINE OF THE NORTHWEST QUARTER OF SECTION 35.

2019 - PLS 2675 FOUND HARRISON 4" BELOW THE ROAD SURFACE AND 1 TIE. THE MONUMENT AGREES WITH THE EXISTING TIE. ACCEPTED THE HARRISON AS THE CORNER LOCATION. SET 3 NEW TIES AND MEASURED TO THE EXISTING TIE.



LOCATION
(INDICATE CORNER BY "X")

SEAL:



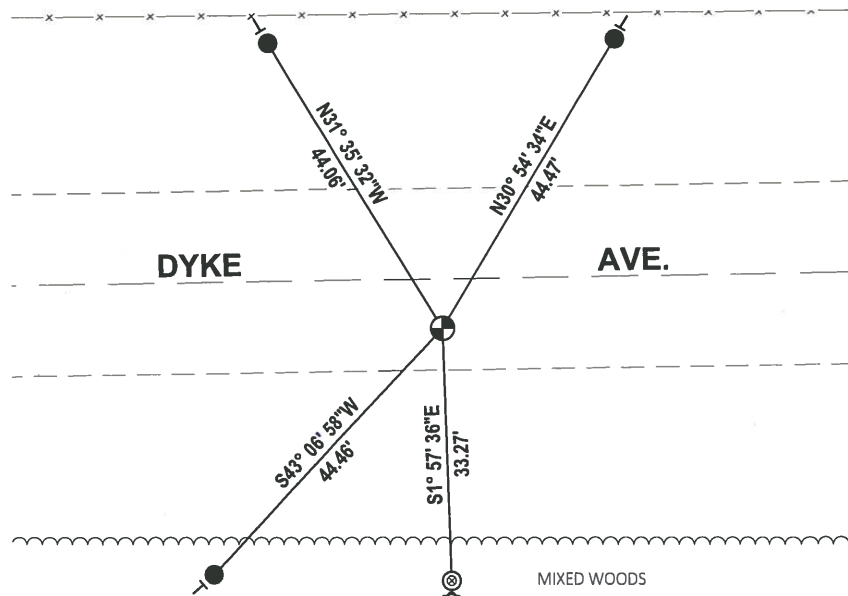
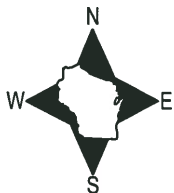
DATA SHOWN HERE ON THIS TIE SHEET IS CORRECT AND COMPLETE TO THE BEST OF MY KNOWLEDGE AND BELIEF.

PROFESSIONAL LAND SURVEYOR

DATE 5/1/19

- TIE SKETCH

NOTE: THE CORNER FALLS ±7' SOUTH OF DYKE AVE. CENTERLINE.



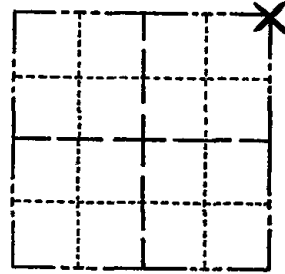
- SET 3/4" x 18" IRON REBAR, 1.50#/FT
- ⊙ FOUND 2-3/8" O.D. IRON PIPE
- ⊕ FOUND HARRISON MONUMENT
- ✓ STEEL FENCE POST
- ┌ VINYL "T" POST

ADAMS COUNTY

Survey Monument Record

TYPE OF MONUMENT: Standard Harrison
 STATE PLANE COORDINATES: N _____
 E _____
 ELEVATION — M.S.L. DATUM: _____
 THETA ANGLE: _____
 FIELD BOOK: _____ PAGE _____

CORNER NO. 573
 SECTION 35
 TOWN 17
 RANGE 7



BASIS FOR MONUMENT LOCATION

(Use reverse side if necessary)

Show info such as: History of corner, with reference to Vol. and pg, dates, surveyor; exact description of monument replaced; if location computed, by taped or EDM traverse; landowner remarks, etc.

Ran EDM/transit traverse around Section 35 and adjacent sections.

Did not excavate because search area fell in a cut section of the road.

Established corner by doubling over the distance and line of the North line of the Northwest Quarter of Section 35.

LOCATION (Indicated by 'X')
 SEAL:



CORNER	O.K.	3-28-77	GR-SS
"	"	5-26-82	PK-SS
"	"	1-22-87	JL-SS
"	"	12-12-91	KZ-JG

CERTIFIED CORRECT:

Dale C. Hagen
 Registered Land Surveyor

DATE: October 2, 1974

TIE SKETCH COR OK 2-19-97 JG-SS
 " " 2-13-02 JG
 (Show at least four ties) CK, 9-18-07-JG
 1 NEW TIE 03-05-12 MS

NOTE:

Ties in trees to nail in disc.

