

25
SECTION

17
TOWN

07
RANGE

ADAMS COUNTY

COUNTY CORNER NO: 112

ROMPORTOL ID: 41707250020

PUBLIC LAND SURVEY MONUMENT RECORD

TYPE OF MONUMENT: HARRISON
ADAMS COUNTY COORDINATES, NAD 83 (2007)

N. 197853.422

E. 586429.207

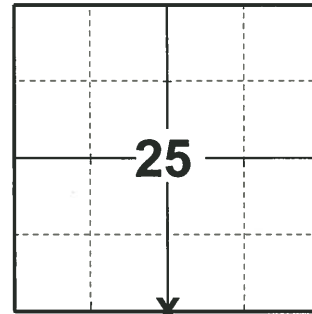
ELEVATION- - - - - DATUM - - - - -

FIELD WORK DATE: 04/17/2019

BASIS FOR MONUMENT LOCATION

1982 - PLS 1444 EXCAVATED WITH BACKHOE, FOUND NOTHING. CORNER IS SET EQUIDISTANT AND ON LINE BETWEEN SECTION CORNERS.

2019 - PLS 2675 FOUND HARRISON 4" BELOW THE ROAD SURFACE, 2 TIES, AND 1 WITNESS. THE MONUMENT AGREES WITH THE EXISTING TIES AND WITNESS. ACCEPTED THE HARRISON AS THE CORNER LOCATION. SET 2 NEW TIES AND MEASURED TO THE EXISTING TIES AND WITNESS.



LOCATION
(INDICATE CORNER BY "X")

SEAL:



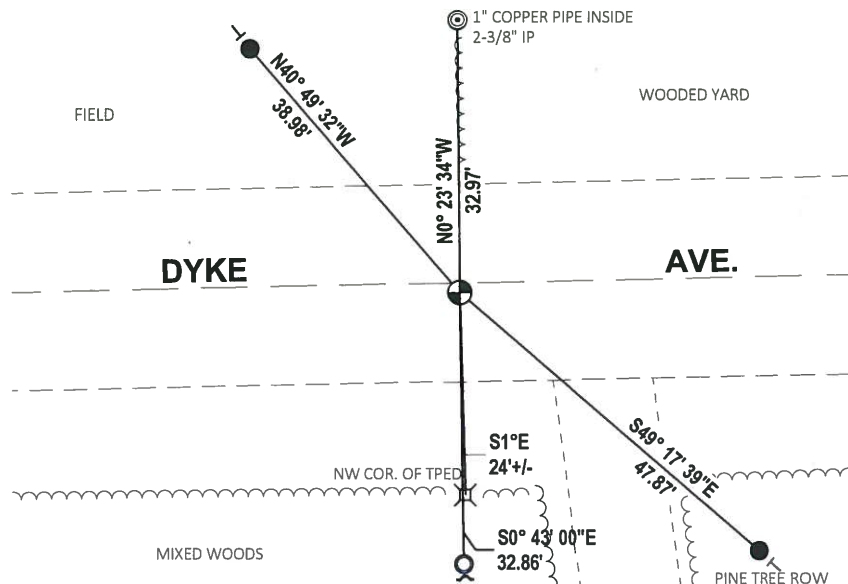
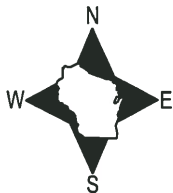
DATA SHOWN HERE ON THIS TIE SHEET IS CORRECT AND COMPLETE TO THE BEST OF MY KNOWLEDGE AND BELIEF.

PROFESSIONAL LAND SURVEYOR

DATE 5/1/19

TIE SKETCH

NOTE: THE CORNER FALLS ±2' SOUTH OF DYKE AVE. CENTERLINE.

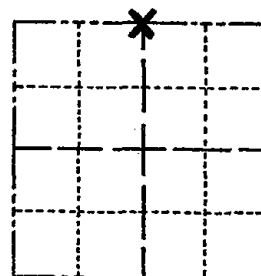


- SET 3/4" x 18" IRON REBAR, 1.50#/FT
- ⊙ FOUND 2-3/8" O.D. IRON PIPE
- FOUND 1-1/4" O.D. IRON PIPE
- ⊕ FOUND HARRISON MONUMENT
- ↙ STEEL FENCE POST
- └ VINYL "T" POST

Government Land Corner Certificate

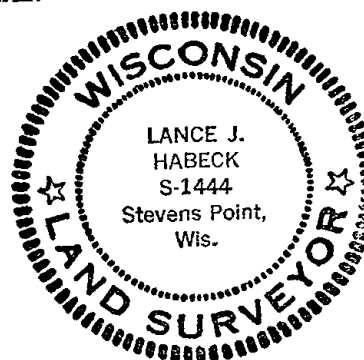
ADAMS County
 TYPE OF MONUMENT: HARRISON
 STATE PLANE COORDINATES: N _____
 E _____
 ELEVATION — M.S.L. DATUM: _____
 THETA ANGLE: _____
 FIELD BOOK: 92 PAGE 41
 DRAWN BY: LANCE HABECK

CORNER NO. 112
 SECTION 36
 TOWN 17
 RANGE 7



LOCATION
(Indicated by 'X')

SEAL:



BASIS FOR MONUMENT LOCATION

Show info such as: History of corner, with reference to Vol. and pg., dates, surveyor; exact description of monument replaced; if location computed, by taped or EDM traverse; landowner remarks, etc. (Use reverse side if necessary)

Excavated with backhoe, found nothing. Corner is set equidistant and on line between Section corners.

DATA SHOWN HERE ON
CERTIFIED CORRECT:

Lance J. Habeck
Registered Land Surveyor

DATE: 5/4/82

TIE SKETCH

Show at least four ties, also fence lines, roads, topo, size and type of witness trees and if off road - best way to arrive at corner.

