

PUBLIC LAND SURVEY MONUMENT RECORD

TYPE OF MONUMENT: HARRISON
 ADAMS COUNTY COORDINATES, NAD 83 (2007)

N. 195147.885

E. 562672.480

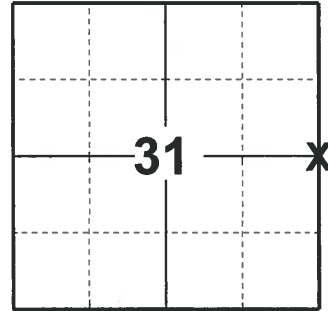
ELEVATION- DATUM

FIELD WORK DATE: 04/24/2019

BASIS FOR MONUMENT LOCATION

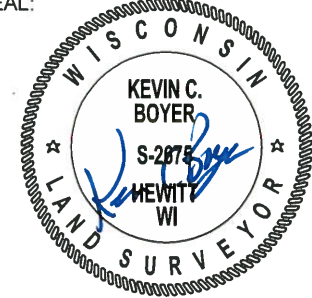
1975 - PLS 878 COULD FIND NO EVIDENCE OF CORNER, NO FENCE LINES, NO RESURVEY OF RECORD. HARRISON SET ON LINE EQUIDISTANT BETWEEN SECTION CORNERS.

2019 - PLS 2675 FOUND HARRISON 12" BELOW THE GROUND AND 2 WITNESSES. THE MONUMENT AGREES WITH BOTH WITNESSES. ACCEPTED HARRISON AS THE CORNER LOCATION. SET 4 NEW TIES AND MEASURED TO THE EXISTING WITNESSES.



LOCATION
 (INDICATE CORNER BY "X")

SEAL:



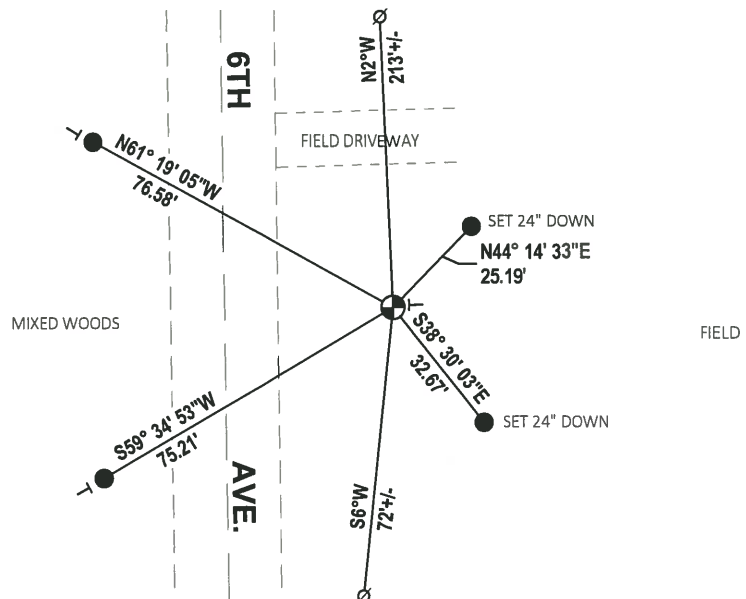
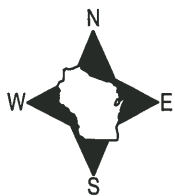
DATA SHOWN HERE ON THIS TIE SHEET IS CORRECT AND COMPLETE TO THE BEST OF MY KNOWLEDGE AND BELIEF.

PROFESSIONAL LAND SURVEYOR

DATE 5/1/19

TIE SKETCH

NOTE: THE CORNER LANDS 48± EAST OF 6TH AVE. CENTERLINE.



- SET 3/4" x 18" IRON REBAR, 1.50#/FT
- ⊕ FOUND HARRISON MONUMENT
- ∅ WITNESS POWER POLE
- ┌ VINYL "T" POST

ADAMS COUNTY

Survey Monument Record

TYPE OF MONUMENT: Harrison standard

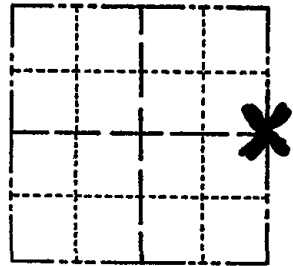
STATE PLANE COORDINATES: N _____
E _____

ELEVATION — M.S.L. DATUM: _____

THETA ANGLE: _____

FIELD BOOK: file PAGE _____

CORNER NO. 863
SECTION 31
TOWN 17
RANGE 7



LOCATION
(Indicated by 'X')

SEAL:

BASIS FOR MONUMENT LOCATION

(Use reverse side if necessary)

Show info such as: History of corner, with reference to Vol. and pg, dates, surveyor; exact description of monument replaced; if location computed, by taped or EDM traverse; landowner remarks, etc.

Could find no evidence of corner, no fence lines, no resurvey of record.
Point set on line equidistant between section corners.



CORNER O.K. 3-15-77 GR-55
" " 8-2-82 PK-55
" " 12-15-86 GR
" " 7-20-92 JG
TIES OK 1-29-97 CR-JG
NEW TIE 2-07-02 JG

CERTIFIED CORRECT:

AB Kiedrowski
Registered Land Surveyor

DATE: 11/19/75

TIE SKETCH OK, 9-13-07-JG

(Show at least four ties)

