

33
SECTION

17
TOWN

07
RANGE

ADAMS COUNTY

COUNTY CORNER NO: 117

ROMPORTOL ID: 41707332000

PUBLIC LAND SURVEY MONUMENT RECORD

TYPE OF MONUMENT: HARRISON
ADAMS COUNTY COORDINATES, NAD 83 (2007)

N. 195158.504

E. 573243.723

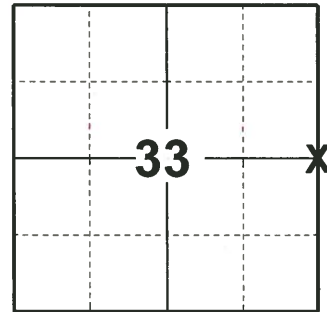
ELEVATION- DATUM

FIELD WORK DATE: 04/24/2019

BASIS FOR MONUMENT LOCATION

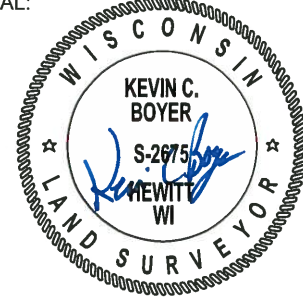
1974 - PLS 1103 RAN EDM/TRANSIT TRAVERSE OF SECTIONS 2, 3, AND 4 OF THE TOWN OF NEW CHESTER AND SECTIONS 34 AND 35 OF THE TOWN OF LINCOLN. SEARCH AREA FOR CORNER FELL WITHIN A CUT SECTION OF 4TH AVE, SO NO ATTEMPT WAS MADE TO EXCAVATE FOR THE CORNER. SET CORNER BY SINGLE PROPORTIONATE METHODS BETWEEN THE NORTHWEST AND SOUTHWEST SECTION CORNERS.

2019 - PLS 2675 FOUND HARRISON 6" BELOW THE ROAD SURFACE, 2 TIES AND 1 WITNESS. THE MONUMENT AGREES WITH THE EXISTING TIES AND WITNESS. ACCEPTED THE HARRISON AS THE CORNER LOCATION. SET 2 NEW TIES AND MEASURED TO THE EXISTING TIES AND WITNESS.



LOCATION
(INDICATE CORNER BY "X")

SEAL:



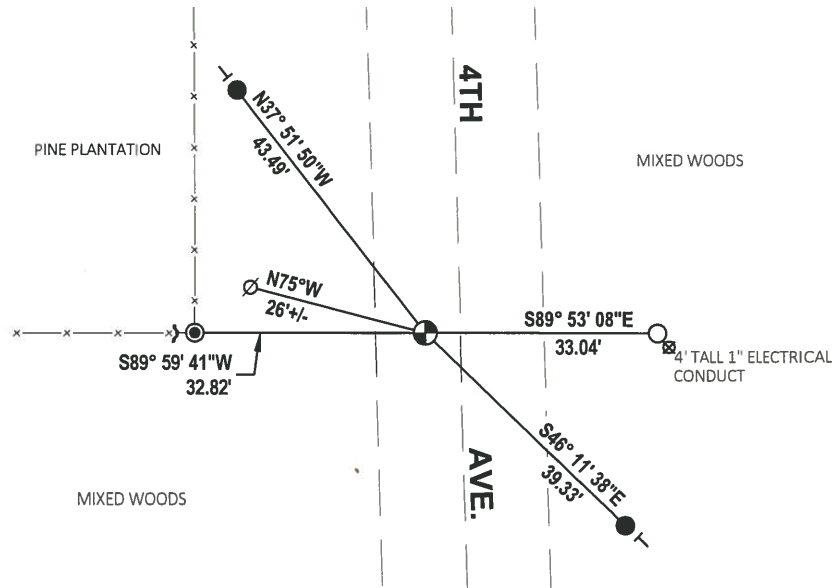
DATA SHOWN HERE ON THIS TIE SHEET IS CORRECT AND COMPLETE TO THE BEST OF MY KNOWLEDGE AND BELIEF.

PROFESSIONAL LAND SURVEYOR

DATE 5/1/19

TIE SKETCH

NOTE: THE CORNER LANDS 5± WEST OF 4TH AVE. CENTERLINE.



- SET 3/4" x 18" IRON REBAR, 1.50#/FT
- FOUND 3/4" IRON ROD
- FOUND 1-1/4" IRON ROD
- ⊕ FOUND HARRISON MONUMENT
- ↘ STEEL FENCE POST
- ┆ VINYL "T" POST

ADAMS COUNTY

Survey Monument Record

TYPE OF MONUMENT: Harrison Monument

STATE PLANE COORDINATES: N _____
E _____

ELEVATION — M.S.L. DATUM: _____

THETA ANGLE: _____

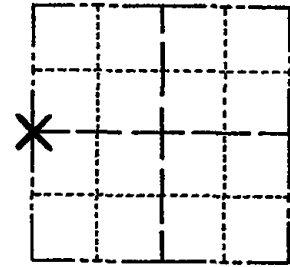
FIELD BOOK: _____ PAGE _____

CORNER NO. 568

SECTION 34

TOWN 17

RANGE 7



LOCATION
(Indicated by 'X')

SEAL:

BASIS FOR MONUMENT LOCATION

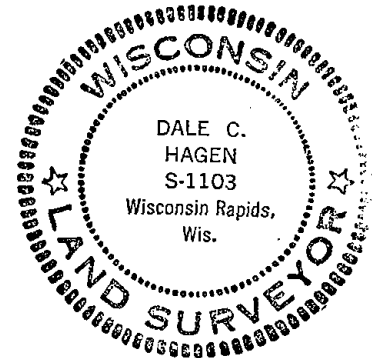
(Use reverse side if necessary)

Show info such as: History of corner, with reference to Vol. and pg. dates, surveyor; exact description of monument replaced; if location computed, by taped or EDM traverse; landowner remarks, etc.

Ran EDM/transit traverse of Sections 2, 3 and 4 of the Town of New Chester and Sections 34 and 35 of the Town of Lincoln.

Search area for corner fell within a cut section of 4th Avenue, so no attempt was made to excavate for the corner.

Set corner by single proportionate methods between the Northwest and Southwest section corners.



CORNER O.K. 3-15-77 GR-SS
" " 5-26-82 PK-SS
" " 1-2-92 GR-SC
TIES OK 1-29-97 CR-JG

CERTIFIED CORRECT:

Dale C. Hagen
Registered Land Surveyor

DATE: October 2, 1974

TIE SKETCH SEE ATTACHED SHEET SH+BF 5-26-99 OK, 9-17-07-JG OK 2-21-12 SS
1-NEW TIE 2-07-02-JG

(Show at least four ties)

Note: Ties to nail in disc.

