

PUBLIC LAND SURVEY MONUMENT RECORD

TYPE OF MONUMENT: HARRISON
ADAMS COUNTY COORDINATES, NAD 83 (2007)

N. 195162.782

E. 578526.988

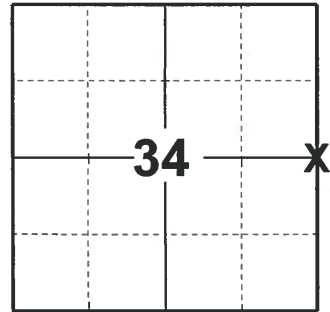
ELEVATION- _____ DATUM _____

FIELD WORK DATE: 04/24/2019

BASIS FOR MONUMENT LOCATION

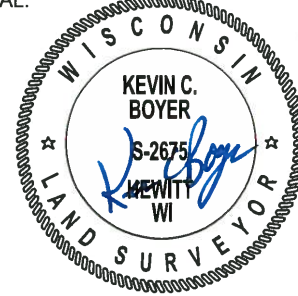
1974 - PLS 1103 RAN EDM/TRANSIT TRAVERSE OF SECTIONS 34 AND 35 AND ADJACENT SECTIONS. EXCAVATED WITH BACKHOE AND FOUND NO EVIDENCE OF CORNER OR ANY REMONUMENTATION. SET CORNER BY SINGLE PROPORTIONATE METHODS BETWEEN NORTHWEST AND SOUTHWEST SECTION CORNERS OF SECTION 35.

2019 - PLS 2675 FOUND HARRISON 4" BELOW THE ROAD SURFACE AND 2 WITNESSES. THE MONUMENT AGREES WITH BOTH WITNESSES. ACCEPTED THE HARRISON AS THE CORNER LOCATION. SET 4 NEW TIES AND MEASURED TO THE EXISTING WITNESSES.



LOCATION
(INDICATE CORNER BY "X")

SEAL:



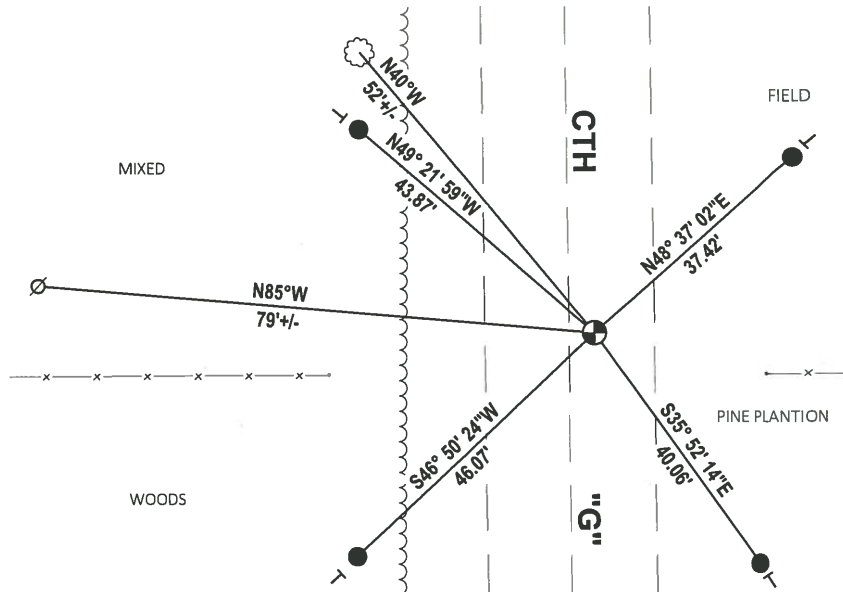
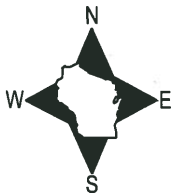
DATA SHOWN HERE ON THIS TIE SHEET IS CORRECT AND COMPLETE TO THE BEST OF MY KNOWLEDGE AND BELIEF.

PROFESSIONAL LAND SURVEYOR

DATE 5/1/19

- TIE SKETCH

NOTE: THE CORNER LANDS 4± EAST OF CTH "G" CENTERLINE.



- SET 3/4" x 18" IRON REBAR, 1.50#/FT
- ⊕ FOUND HARRISON MONUMENT
- ⊘ WITNESS POWER POLE
- ┌ VINYL "T" POST
- ☁ WITNESS TREE

ADAMS COUNTY

CORNER NO. 571

Survey Monument Record

SECTION 35

TYPE OF MONUMENT: Standard Harrison

TOWN 17

STATE PLANE COORDINATES: N _____

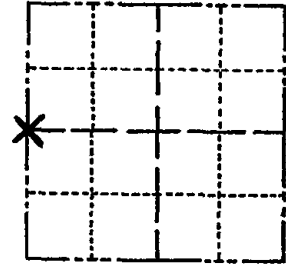
RANGE 7

E _____

ELEVATION — M.S.L. DATUM: _____

THETA ANGLE: _____

FIELD BOOK: _____ PAGE _____



LOCATION
(Indicated by 'X')

SEAL:

BASIS FOR MONUMENT LOCATION

(Use reverse side if necessary)

Show info such as: History of corner, with reference to Vol. and pg. dates, surveyor; exact description of monument replaced; if location computed, by taped or EDM traverse; landowner remarks, etc.

Ran EDM/transit traverse of Sections 34 and 35 and adjacent sections.

Excavated with backhoe and found no evidence of corner or any remonumentation.

Set corner by single proportionate methods between Northwest and Southwest section corners of Section 35.



CERTIFIED CORRECT

Registered Land Surveyor

DATE: October 2, 1974

Dale C. Hagen

CORNER	O.K.	3-28-77	GR-SS
"	"	5-26-82	PK-SS
"	"	1-22-87	J.L.-S.S.
"	"	1-02-91	LR-SS
TIES OK		1-29-97	LR-JG

TIE SKETCH SEE ATTACHED SHEET SH+BF 5-26-99 1 NEW 3-2-12 55

(Show at least four ties) OK 2-13-02-JG
OK 9-18-07-JG
3" RED OAK IN CLUMP

NOTE: Ties in trees to nail in disc.

