

11 SECTION 18 TOWN 04 RANGE

# ADAMS COUNTY

COUNTY CORNER NO: 39  
ROMPORTOL ID: 41804112000

## PUBLIC LAND SURVEY MONUMENT RECORD

TYPE OF MONUMENT: HARRISON  
ADAMS COUNTY COORDINATES, NAD 83 (2007)

N. 247893.730

E. 489382.553

ELEVATION- - - - DATUM - - - -

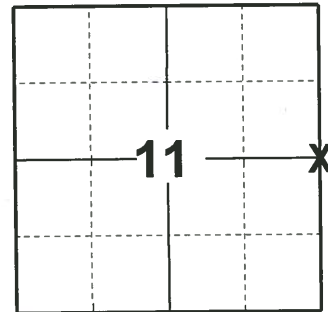
FIELD WORK DATE: 01/11/2019

### BASIS FOR MONUMENT LOCATION

1976 - PLS-606 DID A EDM TRAVERSE. SET CORNER BY COMPUTATION FROM INFORMATION OF SURVEYING BY HARLEY SIME OF TOMAH, WI.

1982 - WISDOT FOUND A HARRISON MONUMENT AND SET 4 NEW BERNSTEN WITNESS MONUMENTS.

2019 - PLS-2675 FOUND HARRISON MONUMENT 12" BELOW THE ROAD SURFACE AND 4 TIES. THE MONUMENT AGREES WITH 3 OF THE 4 TIES. BELIEVED THE NORTH EAST HAS BEEN REPLACED. ACCEPTED THE HARRISON MONUMENT AS THE CORNER AND MEASURED TO THE EXISTING TIES.



LOCATION  
(INDICATE CORNER BY "X")

SEAL:



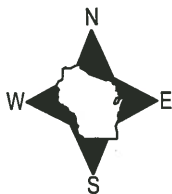
DATA SHOWN HERE ON THIS TIE SHEET IS CORRECT AND COMPLETE TO THE BEST OF MY KNOWLEDGE AND BELIEF.

PROFESSIONAL LAND SURVEYOR

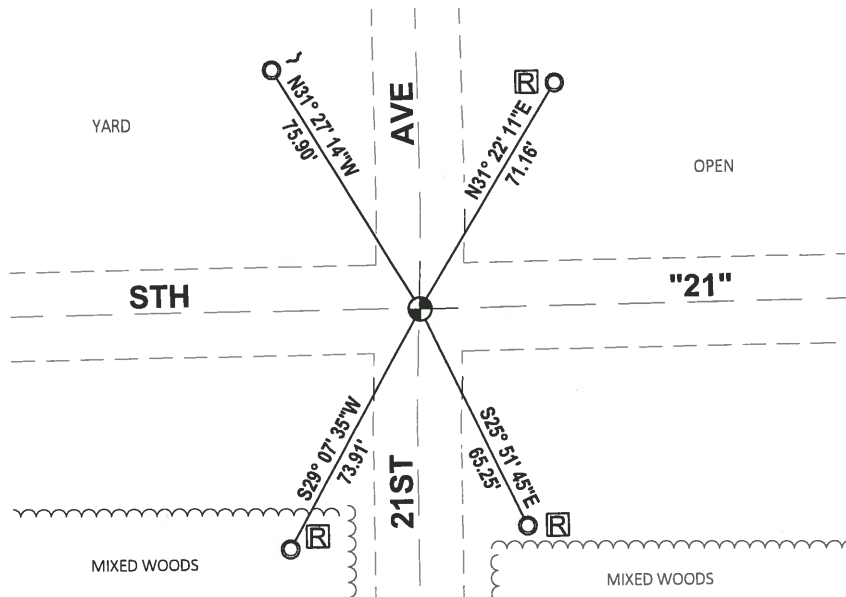
DATE 3/12/19

### TIE SKETCH

NOTE: THE CORNER FALLS .5± SOUTH OF STH "21" CENTERLINE.



- FOUND BERNSTEN MONUMENT
- ⊙ FOUND HARRISON MONUMENT
- ⌒ STEEL FENCE POST
- Ⓜ RW GUARD POST



ADAMS COUNTY

Survey Monument Record

TYPE OF MONUMENT: Harrison

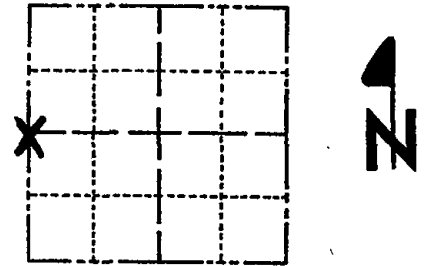
STATE PLANE COORDINATES: N \_\_\_\_\_  
E \_\_\_\_\_

ELEVATION — M.S.L. DATUM: \_\_\_\_\_

THETA ANGLE: \_\_\_\_\_

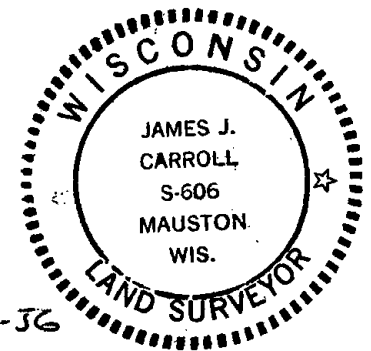
FIELD BOOK: \_\_\_\_\_ PAGE \_\_\_\_\_

CORNER NO. 975<sup>(39)</sup>  
SECTION 12  
TOWN T18N  
RANGE R4E



LOCATION  
(Indicated by 'X')

SEAL:



BASIS FOR MONUMENT LOCATION

(Use reverse side if necessary)

Show info such as: History of corner, with reference to Vol. and pg, dates, surveyor; exact description of monument replaced; if location computed, by taped or EDM traverse; landowner remarks, etc.

E.D.M. traverse

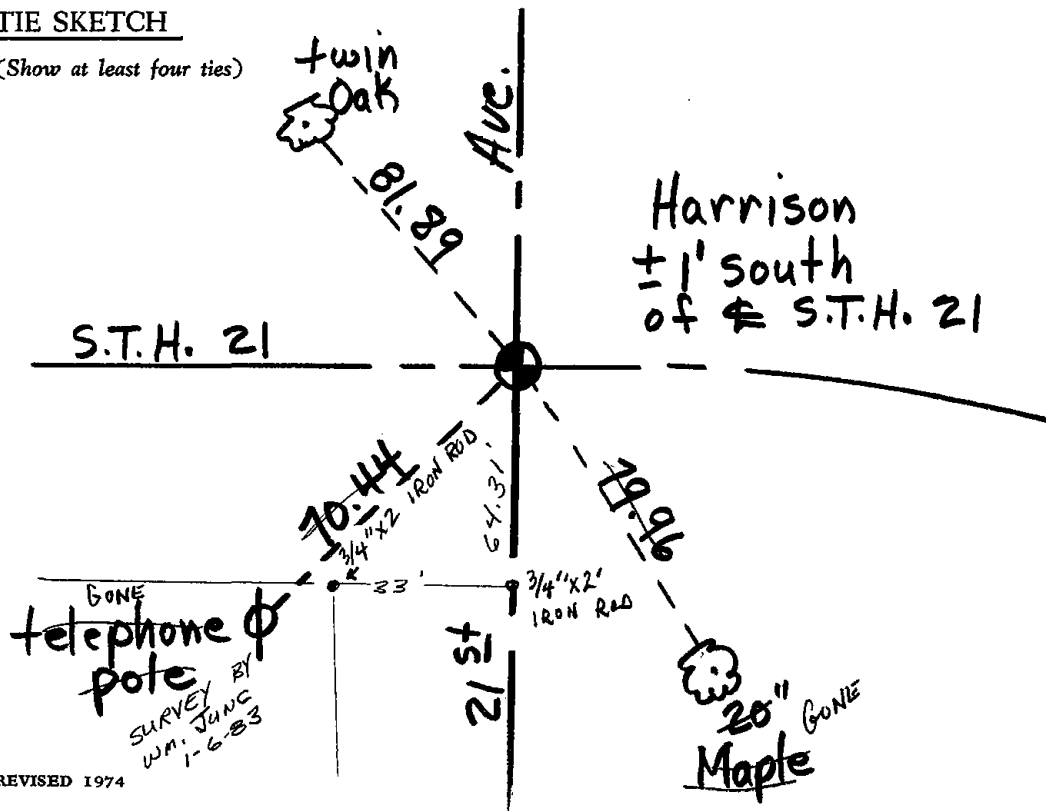
This corner set by computation from information of surveying by Harley Sime of Tomah, Wis.

O.K. 3-3-83 GR-SS  
2-TIES GONE, 2-NEW TIES, MON. OK 9-8-92-JG  
SEE ATTACHED DOT SHEET OK 2-05-98 GR-JG  
" " " " OK 5-22-03-JG  
OK, 11-13-07-JG

CERTIFIED CORRECT:  
James J. Carroll  
Registered Land Surveyor  
DATE: June 1, 1976

TIE SKETCH

(Show at least four ties)



ADAMS COUNTY

Survey Monument Record

TYPE OF MONUMENT: Harrison

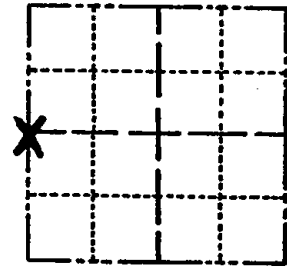
STATE PLANE COORDINATES: N \_\_\_\_\_  
E \_\_\_\_\_

ELEVATION — M.S.L. DATUM: \_\_\_\_\_

THETA ANGLE: \_\_\_\_\_

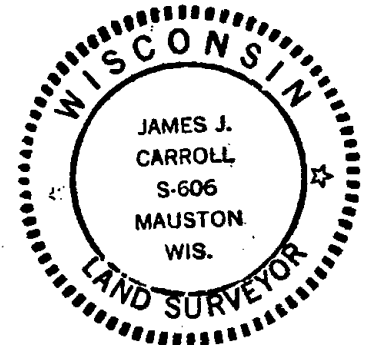
FIELD BOOK: \_\_\_\_\_ PAGE \_\_\_\_\_

CORNER NO. 975<sup>39</sup>  
SECTION 12  
TOWN T18N  
RANGE R4E



LOCATION  
(Indicated by 'X')

SEAL:



BASIS FOR MONUMENT LOCATION

(Use reverse side if necessary)

Show info such as: History of corner, with reference to Vol. and pg. dates, surveyor; exact description of monument replaced; if location computed, by taped or EDM traverse; landowner remarks, etc.

E.D.M. traverse

This corner set by computation from information of surveying by Harley Sime of Tomah, Wis.

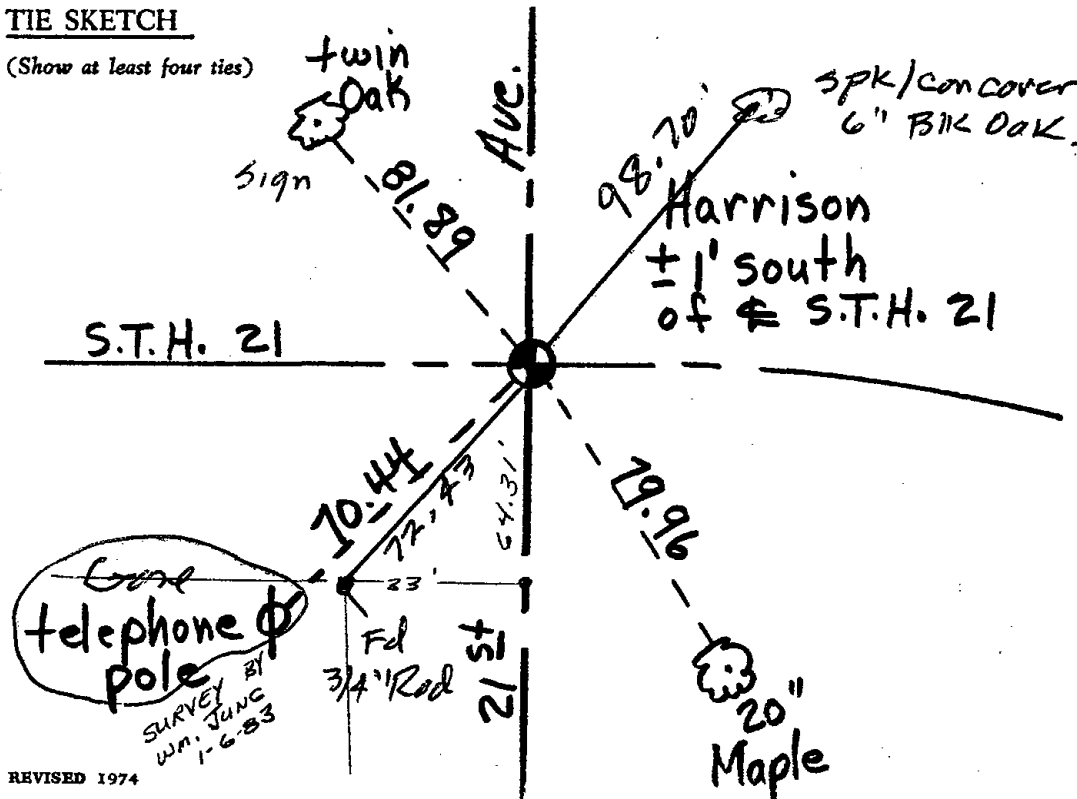
O.K. 3-3-83 GR-55

CERTIFIED CORRECT:  
James J. Carroll  
Registered Land Surveyor  
DATE: June 1, 1976

Ties old Nov 8 '83 Ken Carroll

TIE SKETCH

(Show at least four ties)

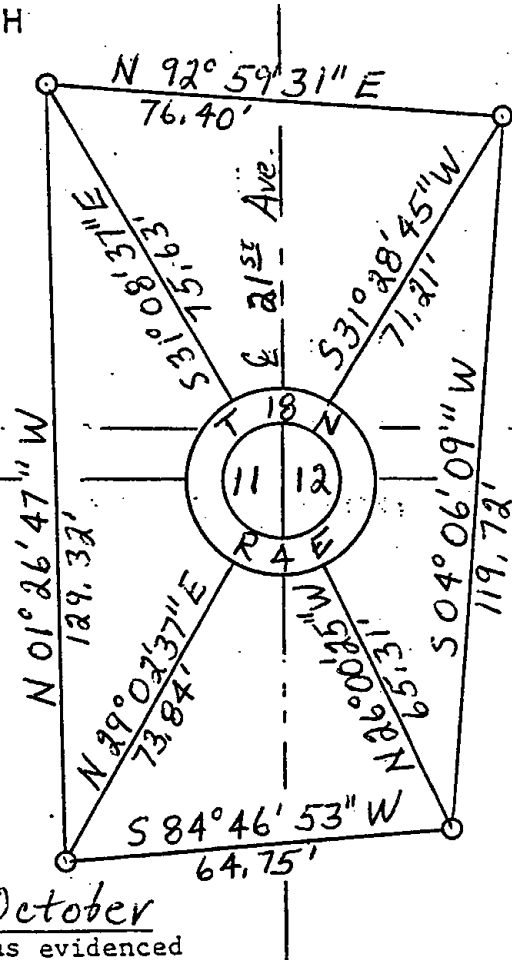
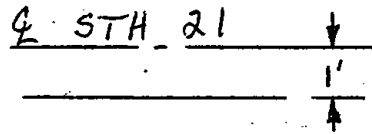
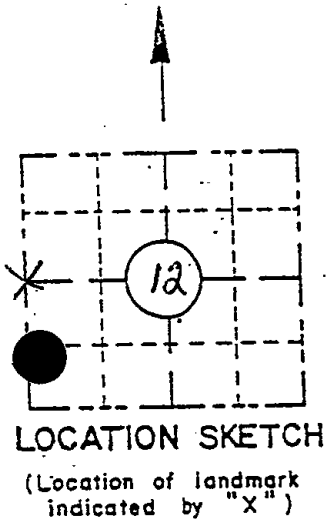


RECORD AND CERTIFICATION OF U.S. PUBLIC LAND SURVEY CONTROL STATION  
E.D-716-72

State of Wisconsin / Department of Transportation

|  |                                    |  |                           |                        |
|--|------------------------------------|--|---------------------------|------------------------|
| District<br><b>04</b>                    | Project I. D.<br><b>6160-07-73</b> | Located by<br><b>P. J. Liepitz</b>                                 |                           |                        |
| Corner<br><b>W 1/4</b>                   | SECTION<br><b>12</b>               | Township<br><b>18 N</b>  | Range (E,W)<br><b>4 E</b> | County<br><b>Adams</b> |
| Wisconsin Coordinates<br><b>CORNER</b>   | East (X)                           | North (Y)  | Elevation (Z)             | Zone                   |
| Control Station Name                     | East (X)                           | North (Y)  | Elevation (Z)             | Zone                   |
| Horizontal — <b>NORTH AMERICAN, 1927</b> |                                    | CONTROL DATUM<br>Vertical — <b>MEAN SEA LEVEL, 1929 ADJUSTMENT</b> |                           |                        |
| Horizontal — _____ Order _____           |                                    | SURVEY CONTROL<br>Vertical — _____ Order _____                     |                           |                        |

SKETCH



W 1/4  
12  
18 N  
4 E

I hereby certify that on the 15 day of October 1992, that I did locate the above corner which was evidenced by Harrison monument; I further certify that to perpetuate the location of such corner I did, at the exact location hereof, place a permanent marker consisting of \_\_\_\_\_

\_\_\_\_\_ ; I further certify that I did establish 4 references or witness monuments consisting of Bernsten monuments

located as shown above:

SEAL

|                                    |                         |       |
|------------------------------------|-------------------------|-------|
| Signature Registered Land Surveyor | Registration No.<br>S - | Title |
|------------------------------------|-------------------------|-------|