

10 SECTION 18 TOWN 04 RANGE

# ADAMS COUNTY

COUNTY CORNER NO: 49  
 ROMPORTOL ID: 4180410000

## PUBLIC LAND SURVEY MONUMENT RECORD

TYPE OF MONUMENT: HARRISON (BROKEN-TOP)  
 ADAMS COUNTY COORDINATES, NAD 83 (2007)

N. 245206.364

E. 484147.722

ELEVATION- - - - - DATUM - - - - -

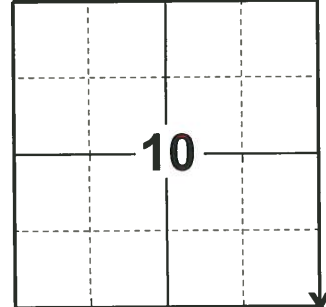
FIELD WORK DATE: 01/14/2019

### BASIS FOR MONUMENT LOCATION

1981 - PLS-1167 TRAVERSED AREA TO LOCATE SEARCH AREA. DUG WITH BACKHOE FOR EVIDENCE TO CORNER, COULD NOT LOCATE. AFTER ANALYZING DATA FROM SAID TRAVERSE THIS LOCATION WAS ACCEPTED. IN THIS AREA THERE IS NO POSSESSION LINES IN THE NORTH TO SOUTH DIRECTION.

2013 - PLS-1478 REDREW TIE-SHEET

2019 - PLS-2675 FOUND HARRISON MONUMENT (BROKEN-TOP) 12" BELOW THE ROAD SURFACE AND DID NOT RECOVER ANY TIES OR WITNESSES. ACCEPTED THE HARRISON MONUMENT (BROKEN-TOP) AS THE CORNER. SET 4 NEW TIES.



**LOCATION**  
 (INDICATE CORNER BY "X")

SEAL:



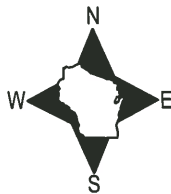
DATA SHOWN HERE ON THIS TIE SHEET IS CORRECT AND COMPLETE TO THE BEST OF MY KNOWLEDGE AND BELIEF.

PROFESSIONAL LAND SURVEYOR

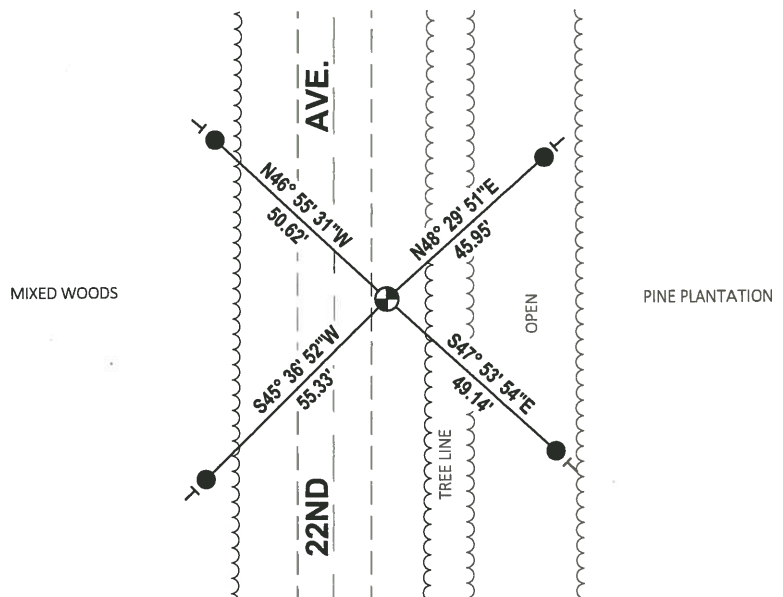
DATE 3/12/19

### - TIE SKETCH

NOTE: THE CORNER LANDS 11'± EAST OF CENTERLINE OF 22ND AVE.



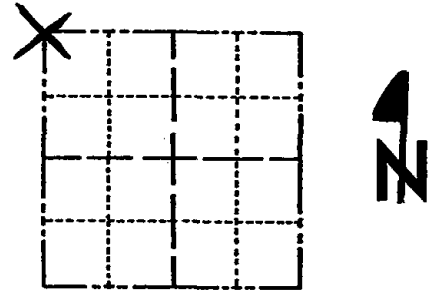
- SET 3/4" x 18" IRON REBAR, 1.50#/FT
- ⊕ FOUND HARRISON MONUMENT (BROKEN-TOP)
- VINYL "T" POST



# Government Land Corner Certificate

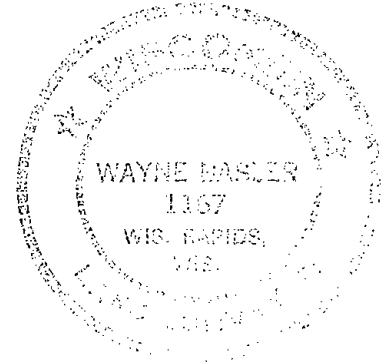
AOAMS County  
 TYPE OF MONUMENT: Harrison  
 STATE PLANE COORDINATES: N \_\_\_\_\_  
 E \_\_\_\_\_  
 ELEVATION — M.S.L. DATUM: \_\_\_\_\_  
 THETA ANGLE: \_\_\_\_\_  
 FIELD BOOK: \_\_\_\_\_ PAGE \_\_\_\_\_  
 DRAWN BY: R. NUBER

CORNER NO. 49  
 SECTION 14  
 TOWN 18  
 RANGE 4



LOCATION  
 (Indicated by 'X')

SEAL:



DATA SHOWN HERE ON  
 CERTIFIED CORRECT:

*Wayne Basler*  
 Registered Land Surveyor

DATE: Nov. 1981

DEC 84 OIC IC- CARLSON

## TIE SKETCH

Show at least four ties, also fence lines, roads, topo, size and type of witness trees and if off road - best way to arrive at corner.

