

11
SECTION

18
TOWN

04
RANGE

ADAMS COUNTY

COUNTY CORNER NO: 50

ROMPORTOL ID: 41804110020

PUBLIC LAND SURVEY MONUMENT RECORD

TYPE OF MONUMENT: HARRISON (BROKEN-TOP)
ADAMS COUNTY COORDINATES, NAD 83 (2007)

N. 245202.969

E. 486784.399

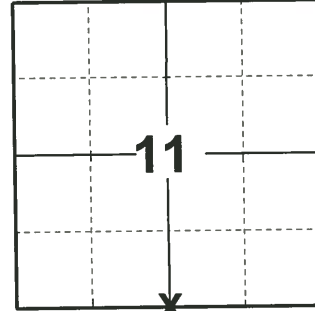
ELEVATION- _____ DATUM _____

FIELD WORK DATE: 01/16/2019

BASIS FOR MONUMENT LOCATION

1981 - PLS-1167 SET CORNER FROM EXISTING BEARING TREE LOCATED IN SE QUAD. MC. SMITH USED SAID TREE IN OCT. 1919.

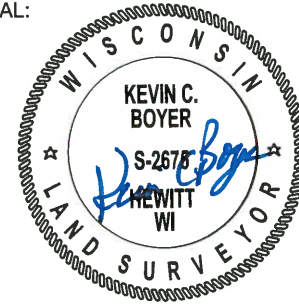
2019 - PLS-2675 FOUND HARRISON MONUMENT (BROKEN-TOP) 6" BELOW GROUND SURFACE AND 1 WITNESS. THE MONUMENT AGREES WITH THE WITNESS. ACCEPTED HARRISON MONUMENT (BROKEN-TOP) AS THE CORNER. SET 4 NEW TIES AND MEASURED TO THE EXISTING WITNESS.



LOCATION

(INDICATE CORNER BY "X")

SEAL:



DATA SHOWN HERE ON THIS TIE SHEET IS CORRECT AND COMPLETE TO THE BEST OF MY KNOWLEDGE AND BELIEF.

PROFESSIONAL LAND SURVEYOR

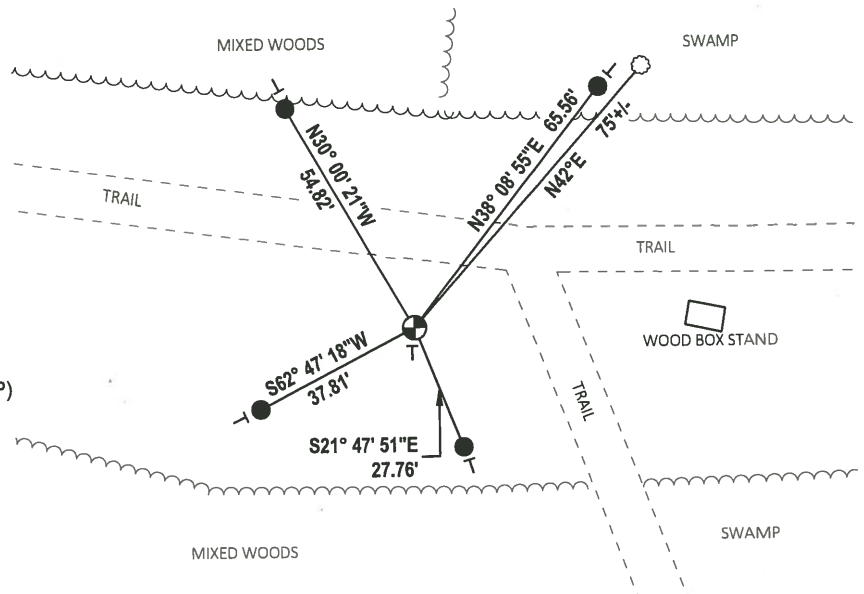
DATE 3/12/19

TIE SKETCH

NOTE: THE CORNER LANDS 19'± SOUTH OF TRAIL AND 28'± WEST OF TRAIL.



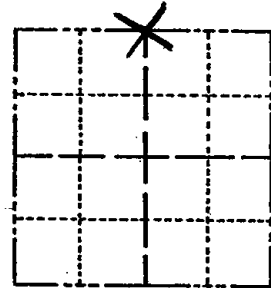
- SET 3/4" x 18" IRON REBAR, 1.50#/FT
- ⊕ FOUND HARRISON MONUMENT (BROKEN-TOP)
- ┌ VINYL "T" POST
- WITNESS TREE



Government Land Corner Certificate

Adams County
 TYPE OF MONUMENT: HARRISON
 STATE PLANE COORDINATES: N _____
 E _____
 ELEVATION — M.S.L. DATUM: _____
 THETA ANGLE: _____
 FIELD BOOK: _____ PAGE _____
 DRAWN BY: R. NUBER

CORNER NO. 50
 SECTION 14
 TOWN 18
 RANGE 4



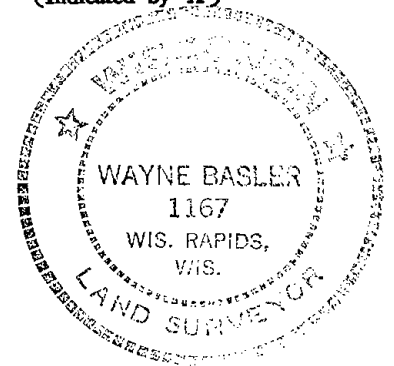
LOCATION
(Indicated by 'X')

BASIS FOR MONUMENT LOCATION

Show info such as: History of corner, with reference to Vol. and pg., dates, surveyor; exact description of monument replaced; if location computed, by taped or EDM traverse; landowner remarks, etc. (Use reverse side if necessary)

Set Corner from existing Bearing Tree located in SE Quad. M.C. Smith used said tree in Oct. 1919.

SEAL:



DATA SHOWN HERE ON
CERTIFIED CORRECT:

Wayne Basler
Registered Land Surveyor

DATE: Nov. 1981

TIE SKETCH

Show at least four ties, also fence lines, roads, topo, size and type of witness trees' and if off road - best way to arrive at corner.

