

12
SECTION

18
TOWN

04
RANGE

ADAMS COUNTY

COUNTY CORNER NO: 52

ROMPORTOL ID: 41804120020

PUBLIC LAND SURVEY MONUMENT RECORD

TYPE OF MONUMENT: HARRISON
ADAMS COUNTY COORDINATES, NAD 83 (2007)

N. 245291.900

E. 492041.797

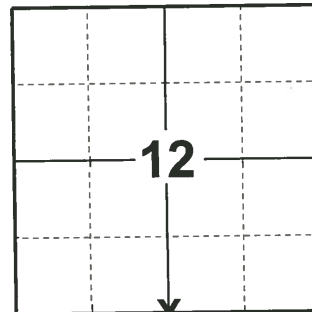
ELEVATION- - - - DATUM - - - -

FIELD WORK DATE: 01/14/2019

BASIS FOR MONUMENT LOCATION

1974 - PLS-1029 REPLACED AN EXISTING 3/4" IRON BAR WITH A HARRISON MONUMENT DOWN 5"

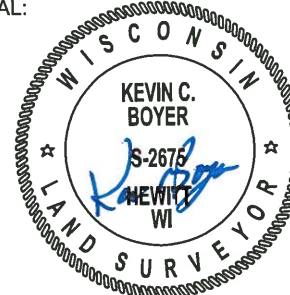
2019 - PLS-2675 FOUND HARRISON MONUMENT 12" BELOW THE ROAD SURFACE, 2 TIES, AND 1 WITNESS. THE MONUMENT AGREES WITH THE 2 TIES AND 1 WITNESS. ACCEPTED THE HARRISON MONUMENT AS THE CORNER. SET 1 NEW TIE. MEASURED TO A FOUND PROPERTY IRON, EXISTING TIES, AND WITNESS.



LOCATION

(INDICATE CORNER BY "X")

SEAL:



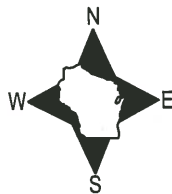
DATA SHOWN HERE ON THIS TIE SHEET IS CORRECT AND COMPLETE TO THE BEST OF MY KNOWLEDGE AND BELIEF.

PROFESSIONAL LAND SURVEYOR

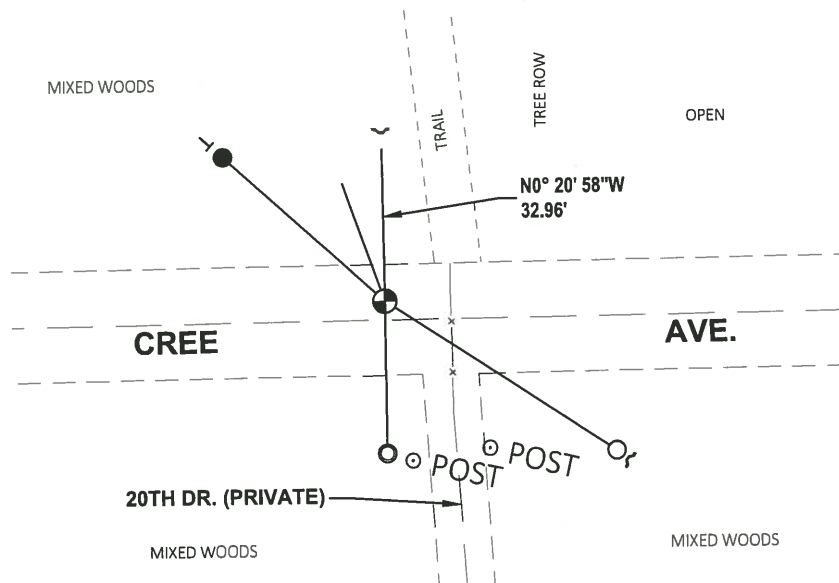
DATE 3/12/19

- TIE SKETCH

NOTE: THE CORNER LANDS 4'± NORTH OF CENTERLINE OF CREE AVE AND 14'± WEST OF 20TH DR.



- SET 3/4" x 18" IRON REBAR, 1.50#/FT
- FOUND 3/4" IRON ROD
- FOUND 1-1/4" O.D. IRON PIPE
- ⊕ FOUND HARRISON MONUMENT
- ┌ STEEL FENCE POST
- └ VINYL "T" POST
- ☼ WITNESS TREE



ADAMS COUNTY

Survey Monument Record

TYPE OF MONUMENT: HARRISON MON.

STATE PLANE COORDINATES: N _____

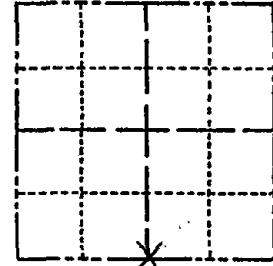
E _____

ELEVATION — M.S.L. DATUM: _____

THETA ANGLE: _____

FIELD BOOK: _____ PAGE _____

CORNER NO. 541 (52)
 SECTION 12
 TOWN 18
 RANGE 4 E



LOCATION
(Indicated by 'X')

BASIS FOR MONUMENT LOCATION

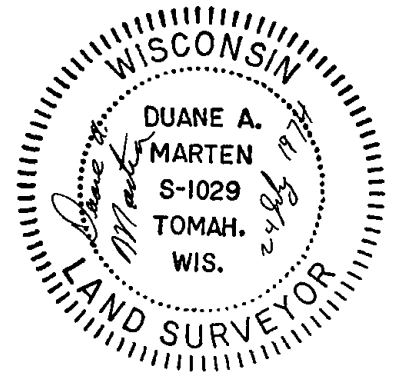
(Use reverse side if necessary)

Show info such as: History of corner, with reference to Vol. and pg, dates, surveyor; exact description of monument replaced; if location computed, by taped or EDM traverse; landowner remarks, etc.

SEAL:

REPLACED AN EXISTING 3/4" IRON BAR
 WITH A HARRISON MON. DOWN 5"

- 3-3-83 GR-SS O.K.
- 12/29/92 GR-JG O.K.
- 2-9-98 - JG - OK
- 1-NEW, 5-22-03 - JG
- OK 11-15-07 CS-SS



CERTIFIED CORRECT:

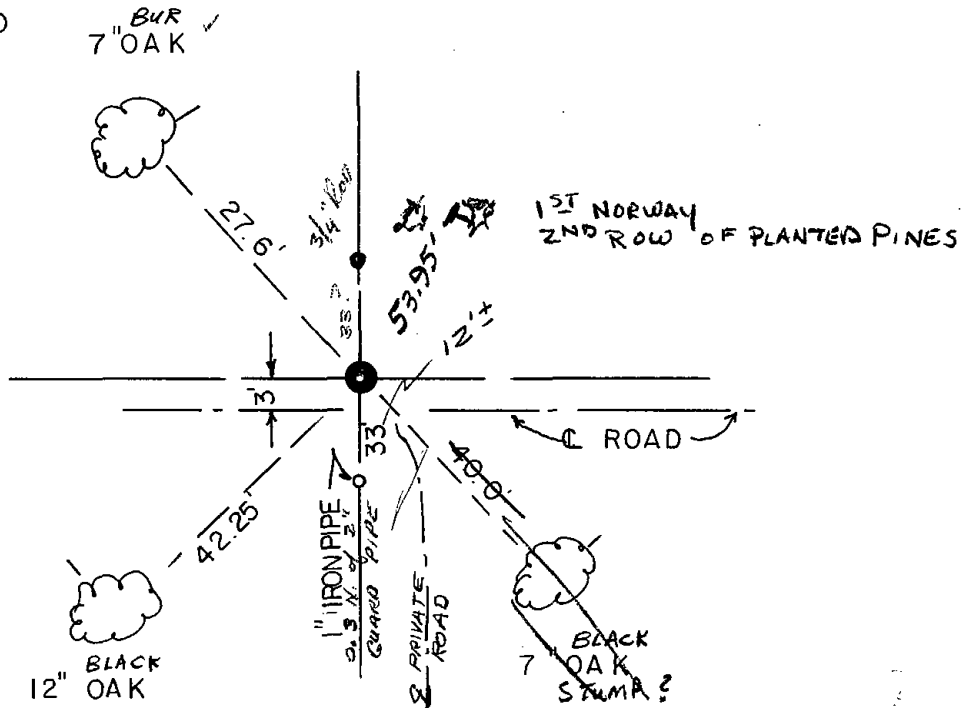
Duane A. Marten

Registered Land Surveyor

DATE: 24 July 74

TIE SKETCH

(Show at least four ties)

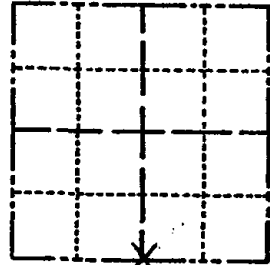


ADAMS COUNTY

Survey Monument Record

TYPE OF MONUMENT: HARRISON MON.
 STATE PLANE COORDINATES: N _____
 E _____
 ELEVATION — M.S.L. DATUM: _____
 THETA ANGLE: _____
 FIELD BOOK: _____ PAGE _____

CORNER NO. 541 (52)
 SECTION 12
 TOWN 18
 RANGE 4 E



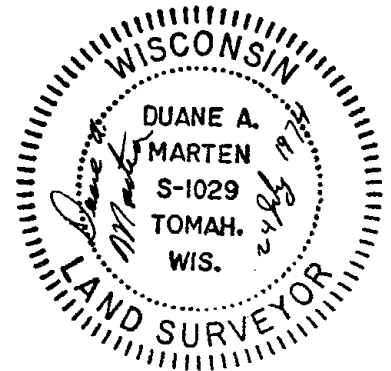
BASIS FOR MONUMENT LOCATION

(Use reverse side if necessary)

Show info such as: History of corner, with reference to Vol. and pg. dates, surveyor; exact description of monument replaced; if location computed, by taped or EDM traverse; landowner remarks, etc.

LOCATION
(Indicated by 'X')

SEAL:



REPLACED AN EXISTING 3/4" IRON BAR
 WITH A HARRISON MON. DOWN 5"

3-3-83 GR-SS O.K.

CERTIFIED CORRECT:

Duane A. Marten

Registered Land Surveyor

DATE: 24 July 74

Ties OK NW 883 Ken Carlson

TIE SKETCH

(Show at least four ties)

