

## PUBLIC LAND SURVEY MONUMENT RECORD

TYPE OF MONUMENT: 1" O.D. IRON PIPE  
 ADAMS COUNTY COORDINATES, NAD 83 (2007)

N. 237401.694

E. 494661.718

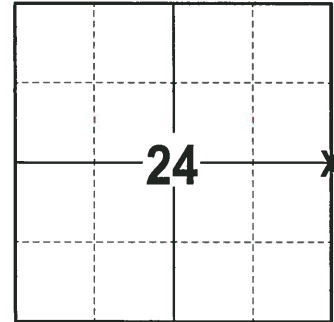
ELEVATION- --- DATUM ---

FIELD WORK DATE: 12/18/2017

### BASIS FOR MONUMENT LOCATION

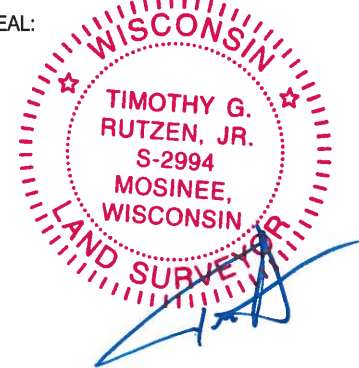
2013 - PLS 1478 RE-DRAFTED PRIOR TIE SHEET BY GREGORY P. RHINEHART FROM 1979. RHINEHART RAN EDM/T2 TRAVERSE AROUND SECTION 19 TO DETERMINE THE SEARCH AREAS. INVESTIGATION YIELDED A 1" IRON PIPE THAT WAS AT THE RECORDED DISTANCE AND BEARING FROM AN EXISTING 24" BLACK OAK WITH AN OVERGROWN BLAZE. M.C. SMITH, A PREVIOUS ADAMS COUNTY SURVEYOR, MARKED A 12" BLACK OAK ON JUNE 3, 1915 AS A BEARING TREE TO THIS CORNER. THE BEARING TREE IS RECORDED AS A "12" BLACK OAK, N29.5E 86 LKS" IN VOL. 2 PG. 13 ADAMS COUNTY SURVEYOR RECORDS. THIS PIPE WAS ACCEPTED AS THE CORNER AND TIED-OUT.

2017 - PLS 2994 FOUND A 1" O.D. IRON PIPE 12" BELOW THE ROAD SURFACE, 2 PROPERTY IRONS AND 1 WITNESS TREE STUMP. THE MONUMENT AGREES WITH THE EXISTING WITNESS TREE STUMP. ACCEPTED THE 1" O.D. IRON PIPE AS THE CORNER LOCATION. SET 2 NEW TIES AND MEASURED TO THE TIES AND WITNESS TREE STUMP.



**LOCATION**  
 (INDICATE CORNER BY "X")

SEAL:



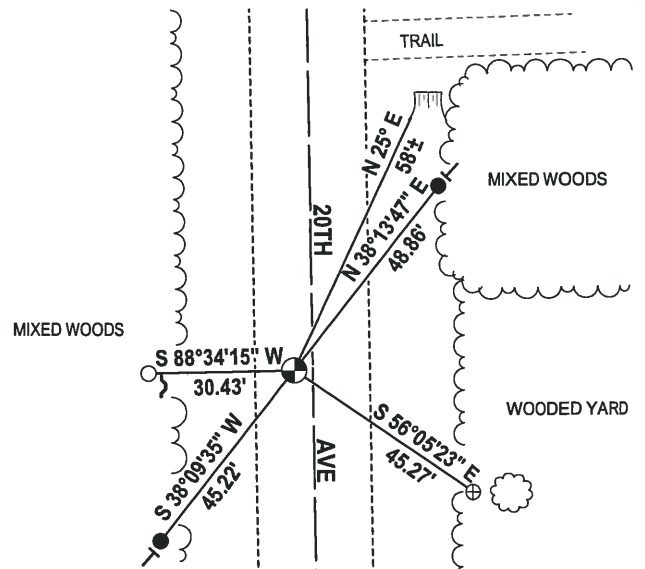
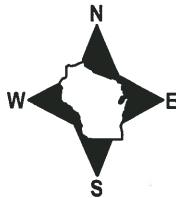
DATA SHOWN HERE ON THIS TIE SHEET IS CORRECT AND COMPLETE TO THE BEST OF MY KNOWLEDGE AND BELIEF.

PROFESSIONAL LAND SURVEYOR

DATE 1-4-18

### - TIE SKETCH -

NOTE: THE CORNER FALLS 4± WEST OF THE CENTERLINE OF 20TH AVE.



- 3/4" x 18" IRON REBAR SET, 1.50#/FT
- 3/4" IRON ROD FOUND
- ⊕ 1-1/4" IRON ROD FOUND
- ⊙ 1" O.D. IRON PIPE FOUND
- ↙ STEEL FENCE POST
- VINYL "T" POST
- ⌋ WITNESS TREE STUMP FOUND