

25 SECTION 18 TOWN 04 RANGE

ADAMS COUNTY

COUNTY CORNER NO: 113
ROMPORTOL ID: 41804250000

PUBLIC LAND SURVEY MONUMENT RECORD

TYPE OF MONUMENT: HARRISON (BROKEN-TOP)
ADAMS COUNTY COORDINATES, NAD 83 (2007)

N. 229464.597

E. 494676.137

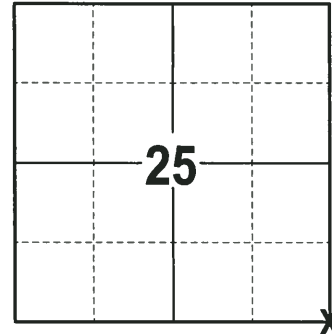
ELEVATION- DATUM

FIELD WORK DATE: 12/18/2017

BASIS FOR MONUMENT LOCATION

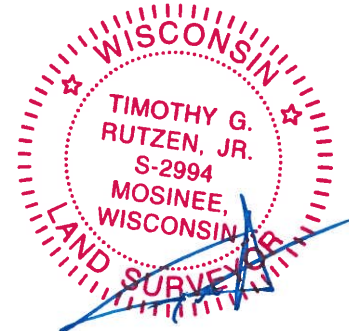
1971 - PLS 981 FOUND A RR SPIKE AND NAIL. SET A HARRISON MONUMENT AT THE CORNER LOCATION AND TIED OUT.

2017 - PLS 2994 FOUND A HARRISON MONUMENT WITH A BROKEN-TOP 8" BELOW THE ROAD SURFACE AND 2 PROPERTY IRONS USED AS TIES. THE MONUMENT AGREES WITH THE EXISTING TIES. ACCEPTED THE HARRISON MONUMENT WITH A BROKEN-TOP AS THE CORNER LOCATION. SET 2 NEW TIES AND MEASURED TO THE TIES.



LOCATION
(INDICATE CORNER BY "X")

SEAL:



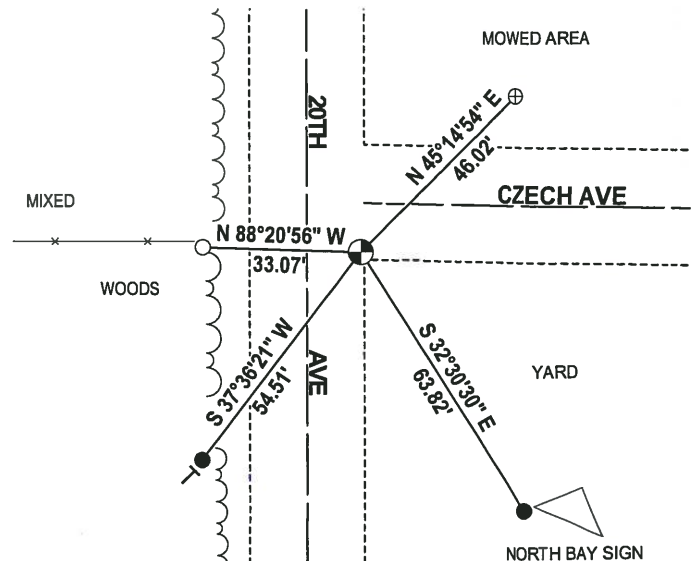
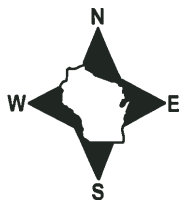
DATA SHOWN HERE ON THIS TIE SHEET IS CORRECT AND COMPLETE TO THE BEST OF MY KNOWLEDGE AND BELIEF.

PROFESSIONAL LAND SURVEYOR

DATE 1-4-18

- TIE SKETCH -

NOTE: THE CORNER FALLS 11± EAST OF THE CENTERLINE OF 20TH AVE AND 10± SOUTH OF THE CENTERLINE OF CZECH AVE.



- 3/4" x 18" IRON REBAR SET, 1.50#/FT
- 1-1/4" O.D. IRON PIPE FOUND
- ⊕ 1-1/4" IRON ROD FOUND
- ⊙ HARRISON (BROKEN-TOP) FOUND
- VINYL "T" POST

ADAMS COUNTY

Survey Monument Record

TYPE OF MONUMENT: 30" HARRISON

STATE PLANE COORDINATES: N _____

E _____

ELEVATION — M.S.L. DATUM: _____

THETA ANGLE: _____

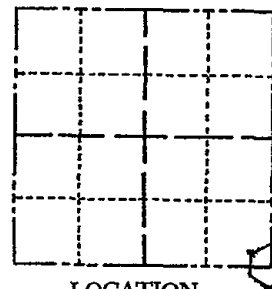
FIELD BOOK: 104 PAGE 58

CORNER NO. 26

SECTION 25

TOWN 18

RANGE 4



LOCATION
(Indicated by 'X')

SEAL:

BASIS FOR MONUMENT LOCATION

(Use reverse side if necessary)

Show info such as: History of corner, with reference to Vol. and pg, dates, surveyor; exact description of monument replaced; if location computed, by taped or EDM traverse; landowner remarks, etc.

Found "RR" spike and nail and set monument

July 21, 1971

Sam T. Mullen R.L.S. S-981

OK 3-3-83 GR-SS

1-NEW TIE, TOP OF MON BROKEN OFF, 8-20-92-JG

ALL OK 2-4-98-JG

OK, 1-30-03-JG

1-GONE, 4-LEFT, MON. 1'DEED 12-13-07-JG

CERTIFIED CORRECT:

Registered Land Surveyor

DATE: _____

TIE SKETCH

(Show at least four ties)

