

# LAND CORNER MONUMENT INDEX

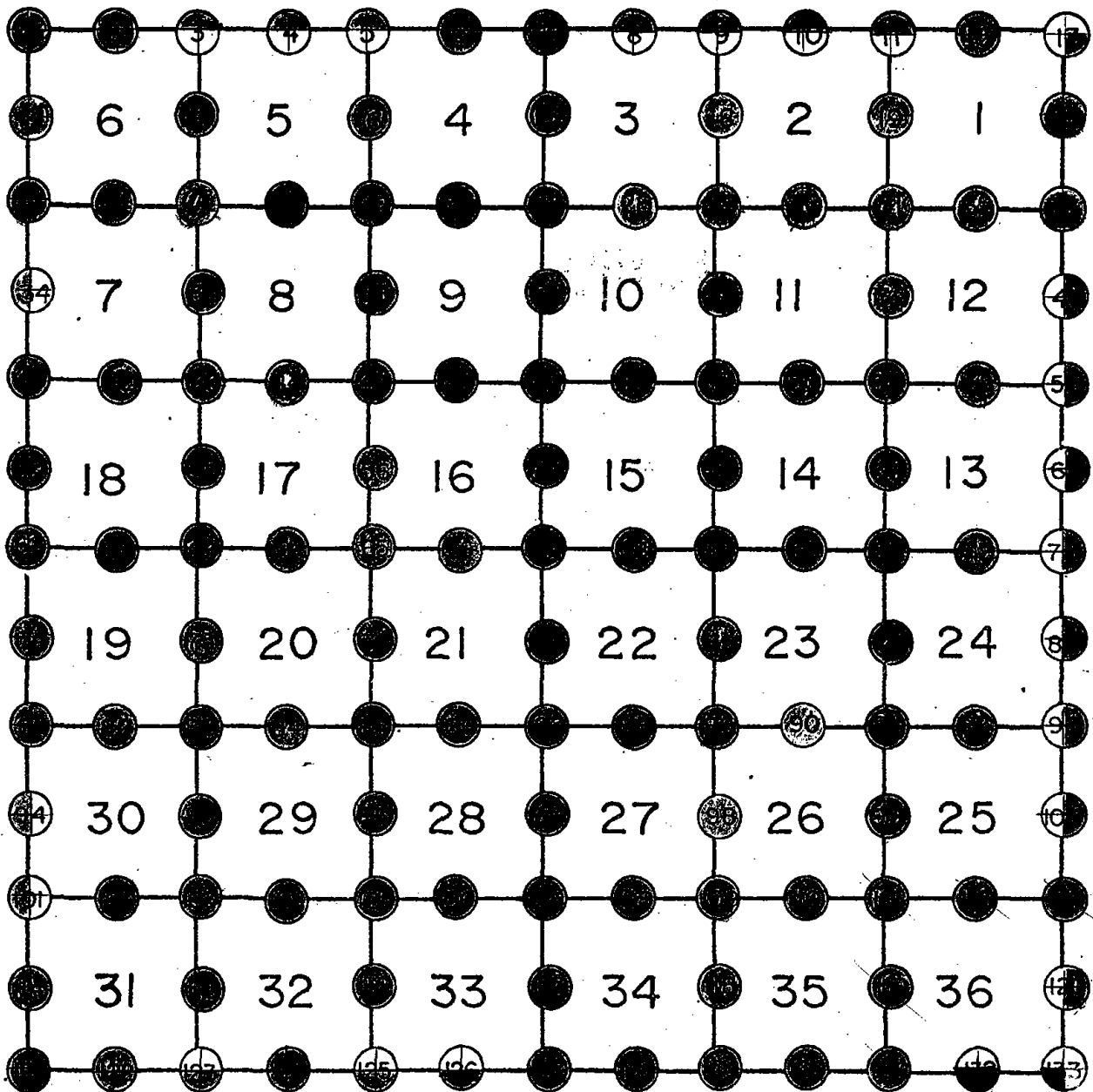
TOWN 18

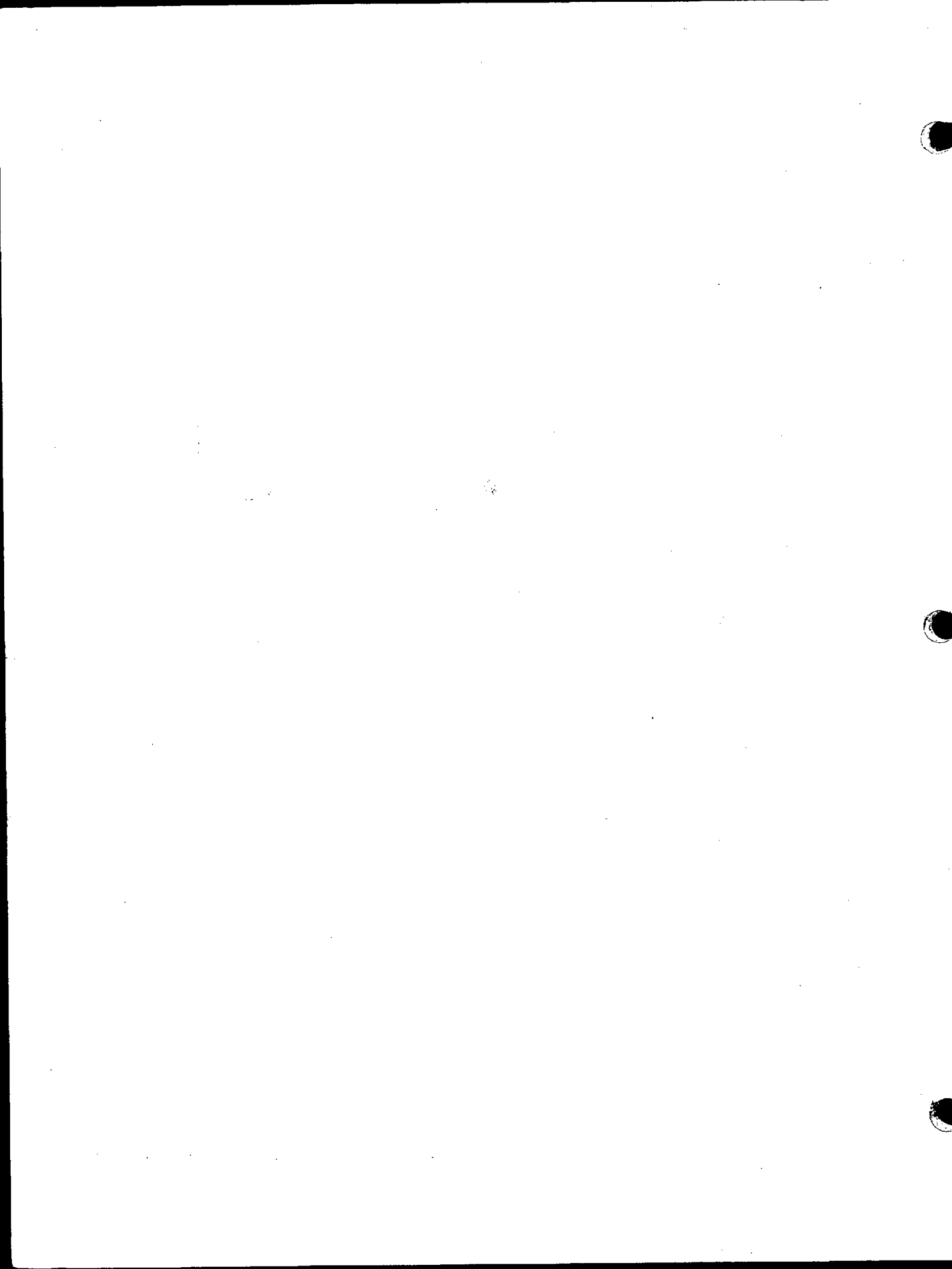
RANGE 5

⊕ Corner Monumented  
Tie Sheet Filed in Adjoining  
Township as Indicated

● Corner Monumented  
Tie Sheet In This Book

○ Corner May or May Not  
Be Monumented -- No Ties





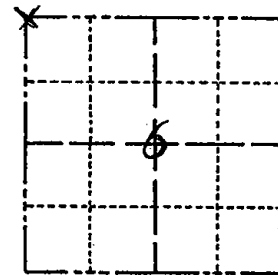


001

# Government Land Corner Certificate

ADAMS County  
 TYPE OF MONUMENT: Harrison Monument  
 STATE PLANE COORDINATES: N \_\_\_\_\_  
 E \_\_\_\_\_  
 ELEVATION — M.S.L. DATUM: \_\_\_\_\_  
 THETA ANGLE: \_\_\_\_\_  
 FIELD BOOK: 77 PAGE 131  
 DRAWN BY: Lloyd W. Scott

CORNER NO. 1  
 SECTION 6  
 TOWN 18  
 RANGE 5



LOCATION  
(Indicated by 'X')

## BASIS FOR MONUMENT LOCATION

Show info such as: History of corner, with reference to Vol. and pg., dates, surveyor; exact description of monument replaced; if location computed, by taped or EDM traverse; landowner remarks, etc. (Use reverse side if necessary)

SEAL:

Excavated large area with backhoe. Found nothing. No record of any resurveys. N - S location of corner set by analyzing a traverse of the section, comparing original distances and possession lines. The E - W location similarly determined.



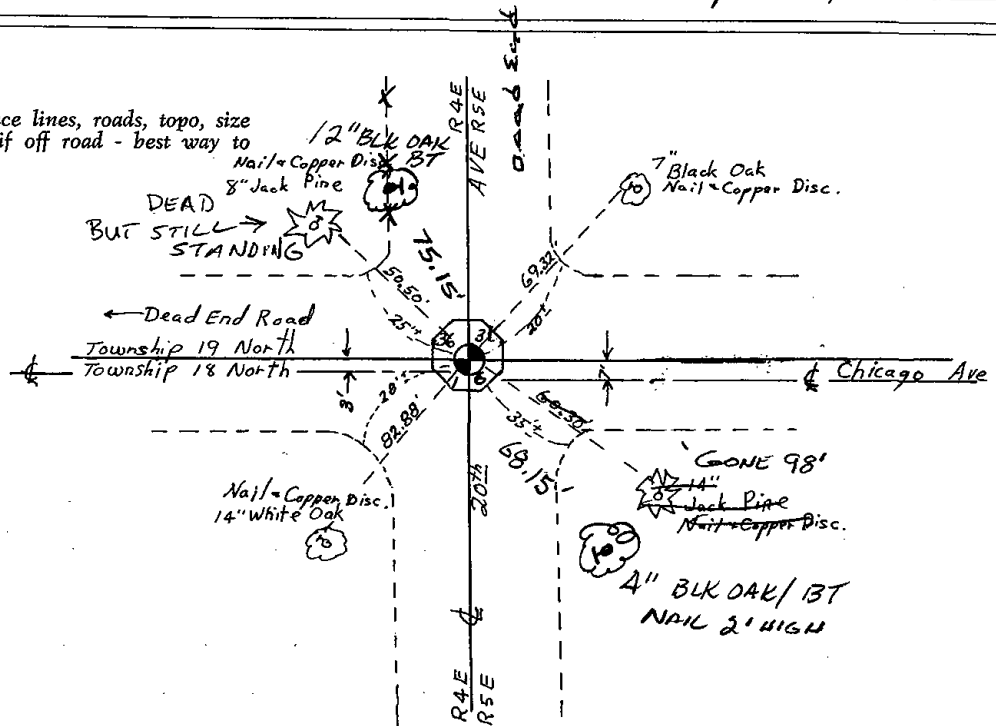
DATA SHOWN HERE ON  
CERTIFIED CORRECT:

*Anthony B. Kiedrowski*  
Registered Land Surveyor

DATE: April 13, 1991

## TIE SKETCH

Show at least four ties, also fence lines, roads, topo, size and type of witness trees and if off road - best way to arrive at corner.

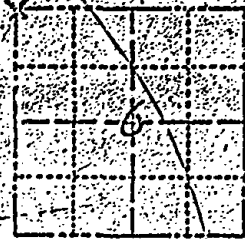




# Government Land Corner Certificate

ADAMS County  
 TYPE OF MONUMENT: Harrison Monument  
 STATE PLANE COORDINATES: N \_\_\_\_\_  
 E \_\_\_\_\_  
 ELEVATION: \_\_\_\_\_ M.S.L. DATUM: \_\_\_\_\_  
 THETA ANGLE: \_\_\_\_\_  
 FIELD BOOK: 77 PAGE: 131  
 DRAWN BY: Lloyd W. Scott

CORNER NO. 1  
 SECTION 6  
 TOWN 18  
 RANGE 5



LOCATION (Indicated by 'X')

## BASIS FOR MONUMENT LOCATION

Show info such as: History of corner, with reference to Vol. and pg., dates, surveyor, exact description of monument replaced, if location computed, by taped or EDM traverse; landowner remarks, etc. (Use reverse side if necessary)

Excavated large area with backhoe. Found nothing. No record of any resurveys. N - S location of corner set by analyzing a traverse of the section, comparing original distances and possession lines. The E - W location similarly determined.

SEAL:



DATA SHOWN HERE ON CERTIFIED CORRECT:

*Anthony B. Kiedrowski*  
Registered Land Surveyor

DATE: April 13, 1981

6-28-94 Tres OK MC

## TIE SKETCH

Show at least four ties, also fence lines, roads, topo, size and type of witness trees and if off road best way to arrive at corner.

