

31 SECTION 19 TOWN 05 RANGE

ADAMS COUNTY

COUNTY CORNER NO: 122

ROMPORTOL ID: 41905310020

PUBLIC LAND SURVEY MONUMENT RECORD

TYPE OF MONUMENT: HARRISON (BROKEN-TOP)
 ADAMS COUNTY COORDINATES, NAD 83 (2007)

N. 255798.139

E. 496474.847

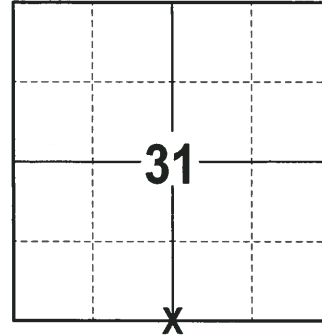
ELEVATION- _____ DATUM _____

FIELD WORK DATE: 01/15/2018

BASIS FOR MONUMENT LOCATION

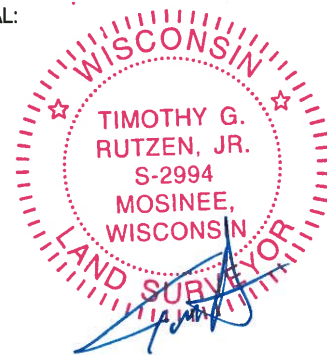
1981 - PLS 878 NO RECORD OF ANY RESURVEYS. DID NOT DIG HERE BECAUSE OF THE DEEP FILL AND NO POSSESSION LINES. THE CORNER WAS SET ON A STRAIGHT LINE BETWEEN SECTION CORNERS IN PROPORTION TO THE ORIGINAL GOVERNMENT DISTANCES. SET A HARRISON MONUMENT AT THE CORNER LOCATION AND TIED OUT.

2018 - PLS 2994 FOUND A HARRISON MONUMENT WITH A BROKEN-TOP 4" BELOW THE ROAD SURFACE AND 1 PROPERTY IRON THAT WAS SET 33' TO THE NORTH. THE MONUMENT AGREES WITH THE EXISTING PROPERTY IRON. ACCEPTED THE HARRISON MONUMENT WITH A BROKEN-TOP AS THE CORNER LOCATION. SET 3 NEW TIES AND MEASURED TO THE TIES AND PROPERTY IRON.



LOCATION
(INDICATE CORNER BY "X")

SEAL:



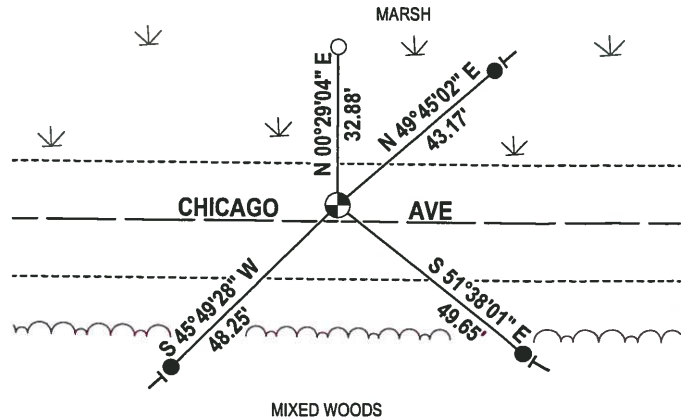
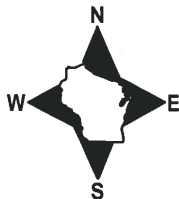
DATA SHOWN HERE ON THIS TIE SHEET IS CORRECT AND COMPLETE TO THE BEST OF MY KNOWLEDGE AND BELIEF.

PROFESSIONAL LAND SURVEYOR

DATE 3-1-18

- TIE SKETCH

NOTE: THE CORNER FALLS 3½ NORTH OF THE CENTERLINE OF CHICAGO AVE.

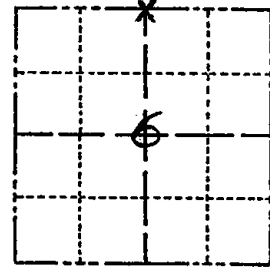


- 3/4" x 18" IRON REBAR SET, 1.50#/FT
- 3/4" IRON ROD FOUND
- ⊕ HARRISON (BROKEN-TOP) FOUND
- VINYL "T" POST

Government Land Corner Certificate

ADAMS County
 TYPE OF MONUMENT: HARRISON
 STATE PLANE COORDINATES: N _____
 E _____
 ELEVATION — M.S.L. DATUM: _____
 THETA ANGLE: _____
 FIELD BOOK: 77 PAGE 132
 DRAWN BY: Lloyd W Scott

CORNER NO. 2
 SECTION 6
 TOWN 18
 RANGE 5



LOCATION
(Indicated by 'X')

BASIS FOR MONUMENT LOCATION

Show info such as: History of corner, with reference to Vol. and pg., dates, surveyor; exact description of monument replaced; if location computed, by taped or EDM traverse; landowner remarks, etc. (Use reverse side if necessary)

No record of any resurveys. Did not dig here because of deep fill and no possession lines. Corner is set on a straight line between section corners in proportion to the original government distances.

SEAL:



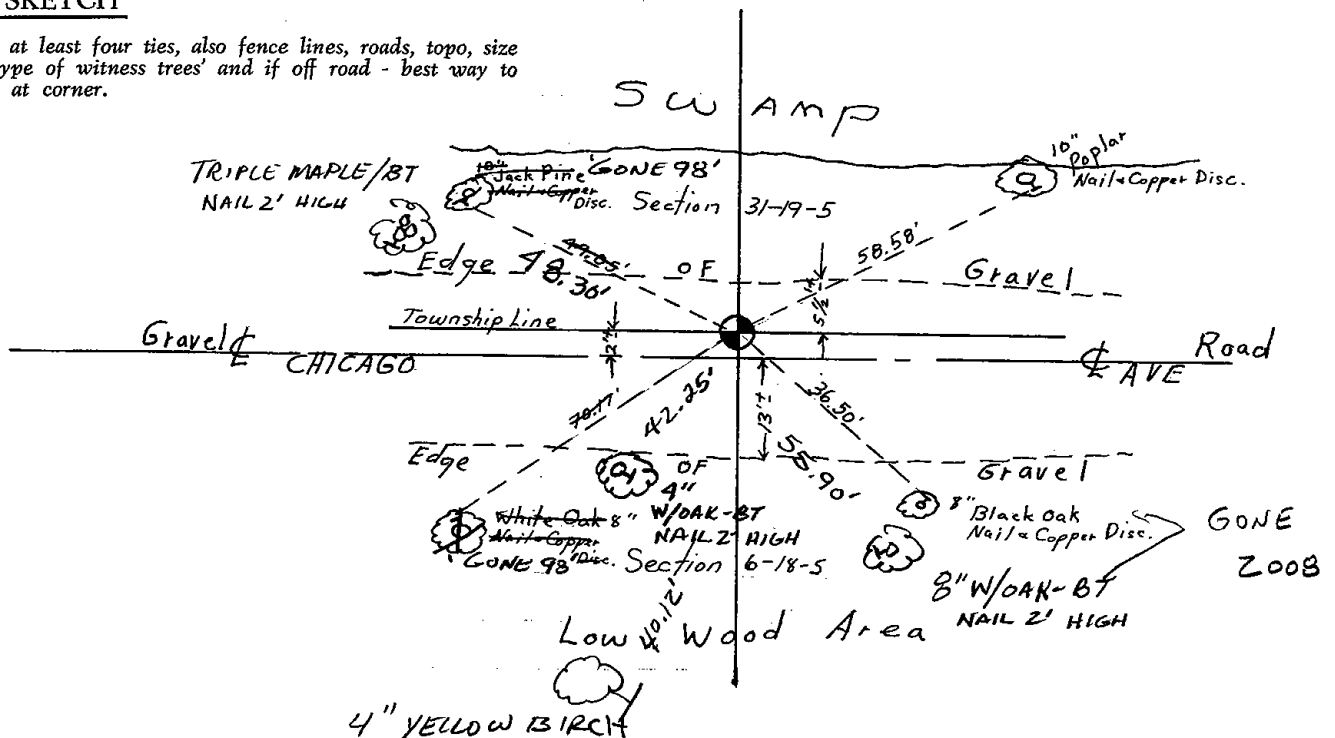
DATA SHOWN HERE ON
CERTIFIED CORRECT:

Anthony B. Kiedrowski
Registered Land Surveyor

DATE: April 13, 1981

TIE SKETCH

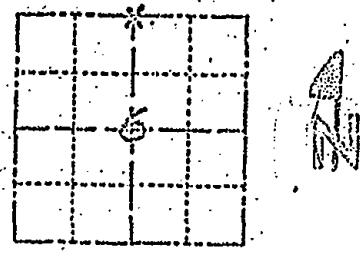
Show at least four ties, also fence lines, roads, topo, size and type of witness trees and if off road - best way to arrive at corner.



Government Land Corner Certificate

ADAMS County
 TYPE OF MONUMENT: HARRISON
 STATE PLANE COORDINATES: N _____
 ELEVATION -- M.S.L. DATUM: _____
 THETA ANGLE: _____
 FIELD BOOK: 77 PAGE 132
 DRAWN BY: Lloyd W. Scott

CORNER NO. 2
 SECTION 6
 TOWN 18
 RANGE 5



LOCATION
(Indicated by 'X')

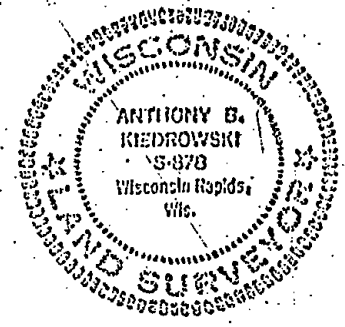
BASIS FOR MONUMENT LOCATION

Show into such as: History of corner, with reference to Vol. and pp.; dates, surveyor; exact description of monument replaced; if location computed, by taped or EDM traverse; landowner remarks, etc. (Use reverse side if necessary)

No record of any resurveys. Did not dig here because of deep fill and no possession lines. Corner is set on a straight line between section corners in proportion to the original government distances.

8/26/95 - TOP BROKEN OFF MC

SEAL:



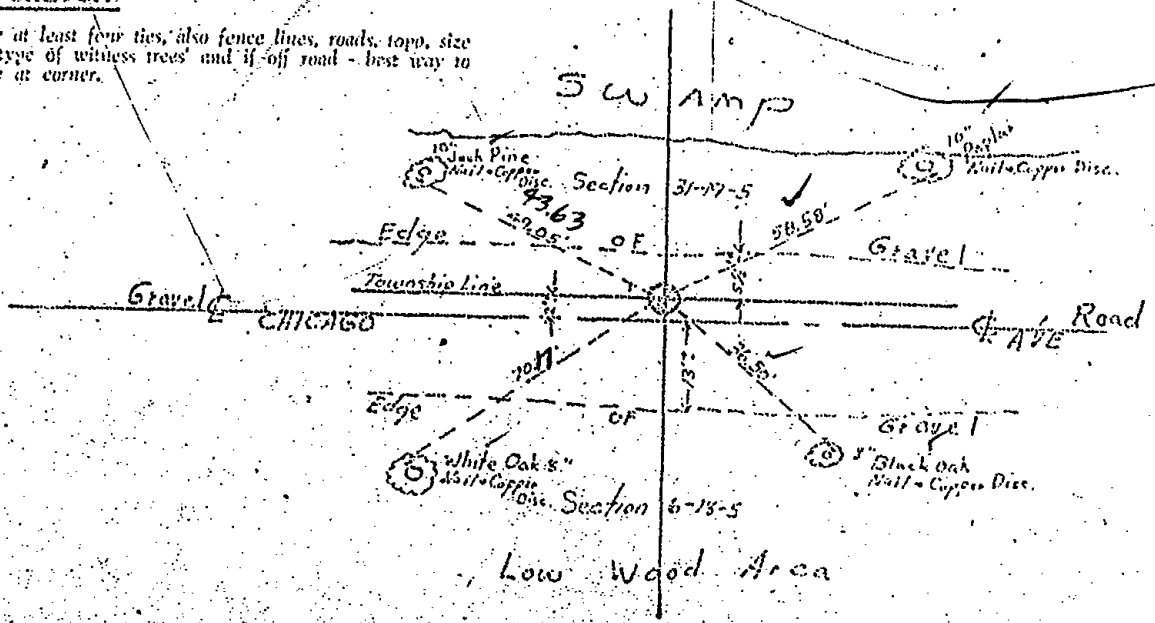
DATA SHOWN HERE ON CERTIFIED CORRECT:

Anthony B. Kiedrowski
 Registered Land Surveyor

DATE: April 13, 1981

THE SKETCH

Show at least few ties, also fence lines, roads, topo, size and type of witness trees and if off road - best way to arrive at corner.



Low Wood Area