

## PUBLIC LAND SURVEY MONUMENT RECORD

TYPE OF MONUMENT: HARRISON (BROKEN-TOP)  
ADAMS COUNTY COORDINATES, NAD 83 (2007)

N. 255797.418

E. 507032.507

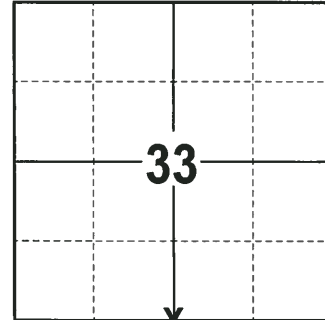
ELEVATION-      DATUM     

FIELD WORK DATE: 01/15/2018

### BASIS FOR MONUMENT LOCATION

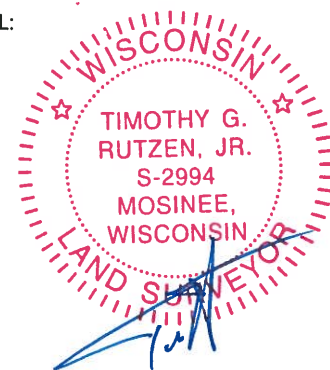
1977 - PLS 878 RAN EDMT2 TRAVERSE AROUND SECTION 4 TO DETERMINE THE SEARCH AREAS AND TO ANALYZE THE POSSESSION. DUG THE OPPOSITE FENCE AT THE N1/4 CORNER AND FOUND NOTHING. DUE TO LACK OF EVIDENCE, THE N1/4 OF SECTION 4 WAS SET OPPOSITE TO THE NORTH FENCE AND ON A LINE BETWEEN THE NW CORNER AND THE NE CORNER OF SECTION 4. SET A HARRISON MONUMENT AT THE CORNER LOCATION AND TIED OUT.

2018 - PLS 2994 FOUND A HARRISON MONUMENT WITH A BROKEN-TOP 2" BELOW THE GROUND SURFACE AND 1 TIE. THE MONUMENT AGREES WITH THE EXISTING TIE. ACCEPTED THE HARRISON MONUMENT WITH A BROKEN-TOP AS THE CORNER LOCATION. SET 3 NEW TIES AND MEASURED TO THE TIES.



**LOCATION**  
(INDICATE CORNER BY "X")

SEAL:



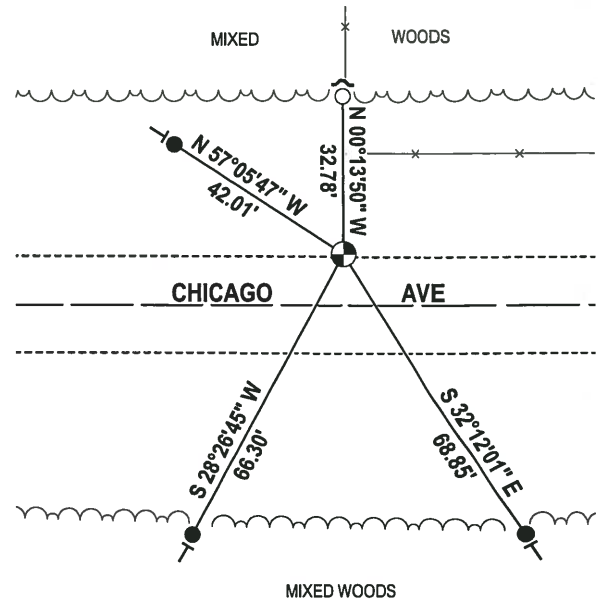
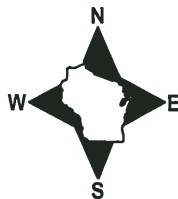
DATA SHOWN HERE ON THIS TIE SHEET IS CORRECT AND COMPLETE TO THE BEST OF MY KNOWLEDGE AND BELIEF.

PROFESSIONAL LAND SURVEYOR

DATE 3-1-18

### - TIE SKETCH -

NOTE: THE CORNER FALLS 10± NORTH OF THE CENTERLINE OF CHICAGO AVE AND 1± NORTH OF THE EDGE OF PAVEMENT.



- 3/4" x 18" IRON REBAR SET, 1.50#/FT
- 3/4" IRON ROD FOUND
- ⊕ HARRISON (BROKEN-TOP) FOUND
- ✓ STEEL FENCE POST
- └ VINYL "T" POST

ADAMS COUNTY

Survey Monument Record

TYPE OF MONUMENT: HARRISON STANDARD

STATE PLANE COORDINATES: N \_\_\_\_\_

E \_\_\_\_\_

ELEVATION — M.S.L. DATUM: \_\_\_\_\_

THETA ANGLE: \_\_\_\_\_

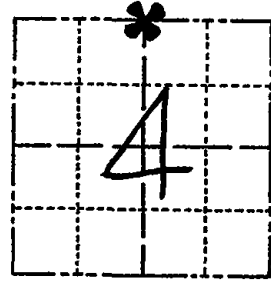
FIELD BOOK: 54 PAGE 7

CORNER NO. 6

SECTION 4

TOWN 18

RANGE 5



LOCATION  
(Indicated by 'X')

SEAL:



BASIS FOR MONUMENT LOCATION

(Use reverse side if necessary)

Show info such as: History of corner, with reference to Vol. and pg, dates, surveyor; exact description of monument replaced; if location computed, by taped or EDM traverse; landowner remarks, etc.

Ran EDM/T2 traverse around Section 4 to determine search areas and to analyze ... possession. Dug opposite fence at N¼ corner and found nothing. Due to lack of evidence set N¼ corner opposite fence to North and on line between NW corner and NE corner of Section 4.

OK 7-28-78 RK-SS  
2-28-83 GR-SS 1 NEW TIE  
9-9-92 JG - OK  
2-GONE, 2-NEW, 2-9-98 - JG  
OK, 2-5-03-JG  
1-NEW, MON. OK, 12-18-07-JG

CERTIFIED CORRECT:

*Anthony B. Kiedrowski*  
Registered Land Surveyor

DATE: 7/6/77

TIE SKETCH

(Show at least four ties)

