

01
SECTION

18
TOWN

04
RANGE

ADAMS COUNTY

COUNTY CORNER NO: 20

ROMPORTOL ID: 41804012000

PUBLIC LAND SURVEY MONUMENT RECORD

TYPE OF MONUMENT: HARRISON
ADAMS COUNTY COORDINATES, NAD 83 (2007)

N. 253255.997

E. 494726.365

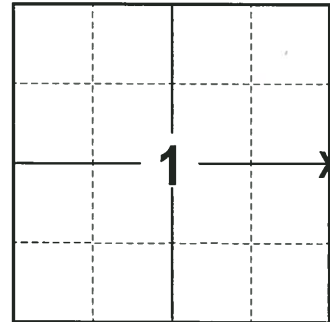
ELEVATION- DATUM

FIELD WORK DATE: 12/14/2017

BASIS FOR MONUMENT LOCATION

2013 - PLS 1478 RE-DRAFTED PRIOR TIE SHEET BY ANTHONY B. KIEDROWSKI FROM 1980. KIEDROWSKI EXCAVATED WITH A BACKHOE AND FOUND A 7"X7"X14" DUG IN SANDSTONE. LOWERED THE STONE AND SET A HARRISON MONUMENT ON TOP AND TIED OUT. NO RECORD OF STONE.

2017 - PLS 2994 FOUND A HARRISON MONUMENT 4" BELOW THE ROAD SURFACE AND 1 WITNESS. THE MONUMENT AGREES WITH THE EXISTING WITNESS. ACCEPTED THE HARRISON MONUMENT AS THE CORNER LOCATION. SET 4 NEW TIES AND MEASURED TO THE TIES AND WITNESS.



LOCATION
(INDICATE CORNER BY "X")

SEAL:



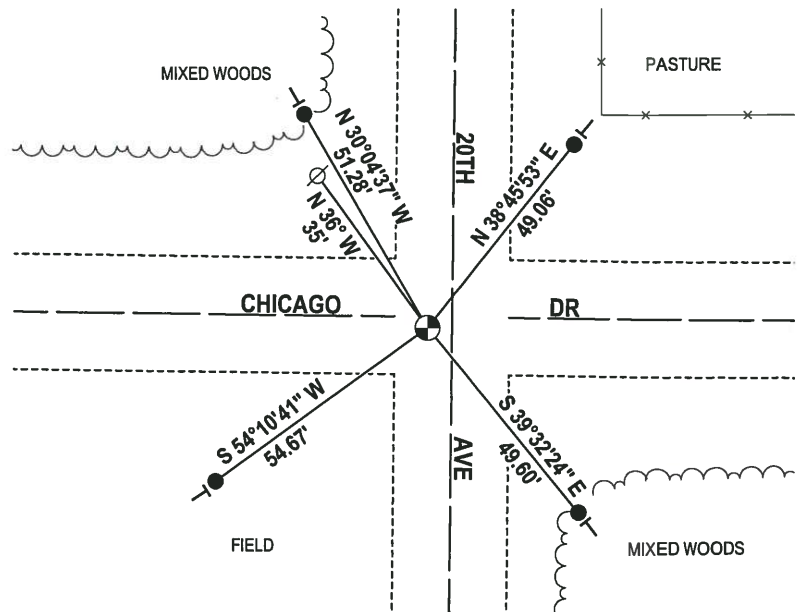
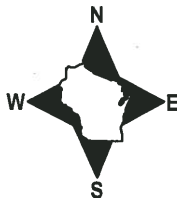
DATA SHOWN HERE ON THIS TIE SHEET IS CORRECT AND COMPLETE TO THE BEST OF MY KNOWLEDGE AND BELIEF.

PROFESSIONAL LAND SURVEYOR

DATE 1-4-18

- TIE SKETCH

NOTE: THE CORNER FALLS 2'± SOUTH OF THE CENTERLINE OF CHICAGO DR AND 5'± WEST OF THE CENTERLINE OF 20TH AVE.



- 3/4" x 18" IRON REBAR SET, 1.50#/FT
- ⊕ HARRISON FOUND
- ⊘ WITNESS POWER POLE FOUND
- VINYL "T" POST

