

6
SECTION

18
TOWN

05
RANGE

ADAMS COUNTY

COUNTY CORNER NO: 15

ROMPORTOL ID: 41805062000

PUBLIC LAND SURVEY MONUMENT RECORD

TYPE OF MONUMENT: HARRISON (BROKEN-TOP)
ADAMS COUNTY COORDINATES, NAD 83 (2007)

N. 253138.290

E. 499153.870

ELEVATION- DATUM

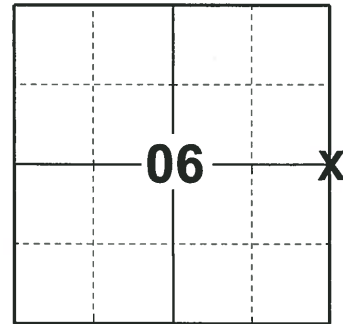
FIELD WORK DATE: 10/17/2018

BASIS FOR MONUMENT LOCATION

1981 - PLS 878 NO RECORD OF ANY RESURVEYS. EXCAVATED WITH A BACKHOE AND FOUND A DARK SQUARED STAIN, 3" x 8" IN A CIRCULAR AREA OF DISTURBED SOIL. IT APPEARED AS THOUGH THERE WAS A STONE AT THIS LOCATION AT ONE TIME. SINCE WE ALSO FOUND A STONE AT THE WEST 1/4 CORNER OF THIS SECTION, THE STAIN WAS MONUMENTED WITH A HARRISON MONUMENT AND TIED OUT. VERIFIED THE LOCATION BY EDM TRAVERSE.

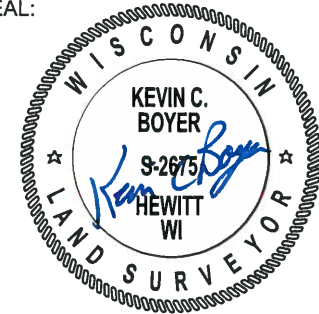
2010 - PLS 1473 FOUND A HARRISON MONUMENT BURIED 1.5' UNDER THE SURFACE. SET A 5" GALVANIZED LANDSCAPING SPIKE OVER THE TOP OF THE MONUMENT AND TIED OUT.

2018 - PLS 2675 FOUND A 5" SPIKE IN THE ROAD SURFACE, 4 TIES AND 2 PROPERTY IRONS. REMOVED THE 5" SPIKE AND FOUND A HARRISON MONUMENT WITH A BROKEN-TOP 18" BELOW THE ROAD SURFACE. THE MONUMENT AGREES WITH THE EXISTING TIES. ACCEPTED THE HARRISON MONUMENT WITH A BROKEN-TOP AS THE CORNER LOCATION AND RE-MEASURED TO THE EXISTING TIES AND PROPERTY IRONS.



LOCATION
(INDICATE CORNER BY "X")

SEAL:



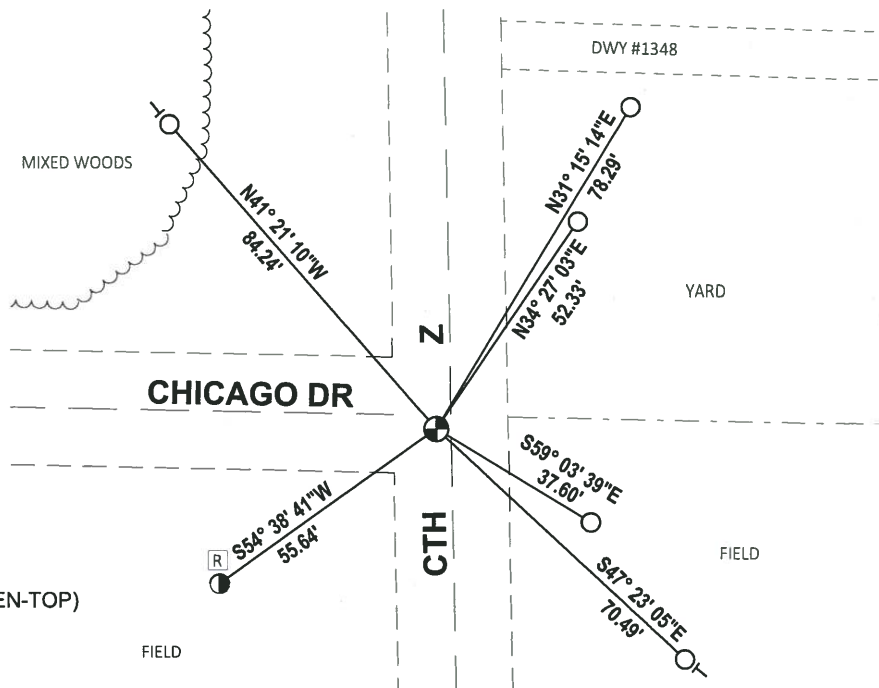
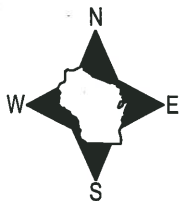
DATA SHOWN HERE ON THIS TIE SHEET IS CORRECT AND COMPLETE TO THE BEST OF MY KNOWLEDGE AND BELIEF.

PROFESSIONAL LAND SURVEYOR

DATE 12/4/2018

TIE SKETCH

NOTE: THE CORNER FALLS 3± SOUTH OF THE CENTERLINE OF CHICAGO AVE AND 3± WEST OF THE CENTERLINE OF CTH Z.

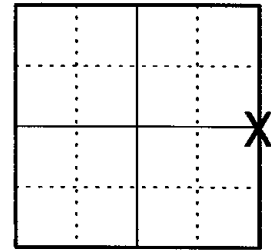


- FOUND 3/4" IRON ROD
- FOUND 5/8" IRON ROD
- ⊕ FOUND HARRISON MONUMENT (BROKEN-TOP)
- Ⓜ RIGHT-OF-WAY GUARD POST
- └ VINYL "T" POST

**U.S PUBLIC LAND SURVEY MONUMENT RECORD
ADAMS COUNTY, WISCONSIN**

CORNER NO. 15
SECTION 6
TOWN 18 N
RANGE 5 E

TYPE OF MONUMENT: 5" GALVANIZED LANDSCAPING SPIKE OVER HARRISON MON.
ADAMS COUNTY COORDINATES:
NORTH: 253138.30'
EAST: 499153.82'

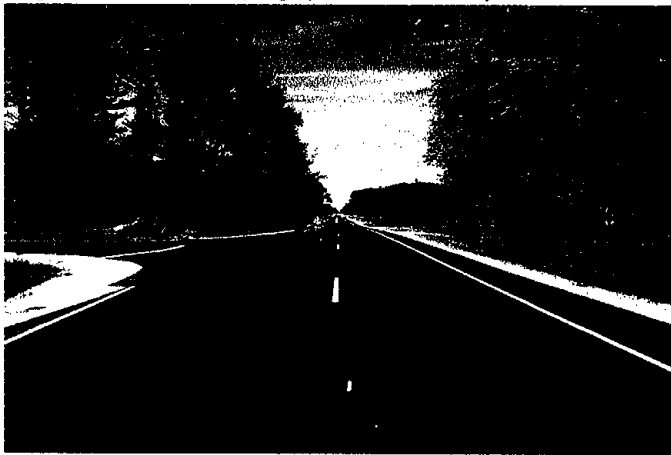


LOCATION

ELEVATION _ MSL DATUM: NOT APPLICABLE
THETA ANGLE: NOT APPLICABLE
FIELD BOOK:
DRAWN BY: DANIEL MARKS

BASIS FOR MONUMENT LOCATION

On April 13, 1981 Anthony B. Kiedrowski found a dark squared stain 3" x 8" in a circular area of disturbed soil and set a Harrison monument. Corner was buried 1.5' under the surface so I set a 5" galvanized landscaping spike over the top of the monument.



SEAL



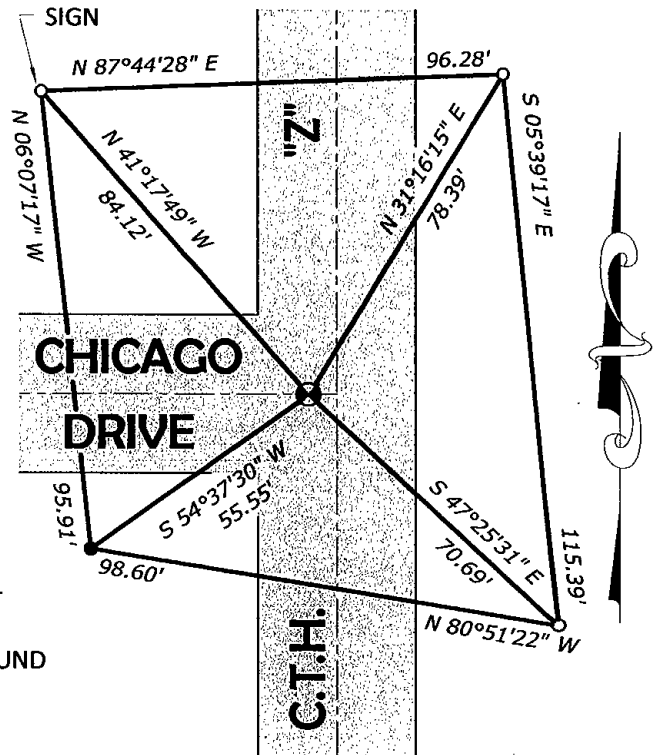
DATA SHOWN HEREON CERTIFIED CORRECT:

Daniel Marks

REGISTERED LAND SURVEYOR

DATE: August 1, 2010

TIE SKETCH: No Scale



MAINTENANCE RECORD

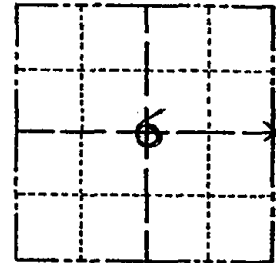
DATE	INIT.	REMARKS

- 3/4" IRON ROD SET
- 5/8" IRON ROD FOUND AT RW POST

Government Land Corner Certificate

ADAMS County
 TYPE OF MONUMENT: Harrison
 STATE PLANE COORDINATES: N _____
 E _____
 ELEVATION — M.S.L. DATUM: _____
 THETA ANGLE: _____
 FIELD BOOK: 77 PAGE 127
 DRAWN BY: Lloyd W. Scott

CORNER NO. 15
 SECTION 6
 TOWN 18
 RANGE 5



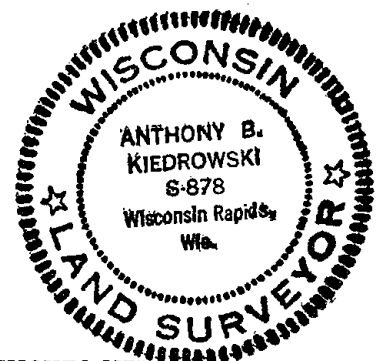
LOCATION
(Indicated by 'X')

BASIS FOR MONUMENT LOCATION

Show info such as: History of corner, with reference to Vol. and pg., dates, surveyor; exact description of monument replaced; if location computed, by taped or EDM traverse; landowner remarks, etc. (Use reverse side if necessary)

No record of any resurveys. Excavated with backhoe, found ~~nothing. Corner is not set on a straight line, as this would not match any forty line occupation. Location of this corner~~ dark squared stain, 3" x 8" in a circular area of disturbed soil. It appeared as though there was a stone at this location at one time. Since we also found a stone at the west ¼ corner of this section, the stain was monumented and the location verified by EDM traverse.

SEAL:



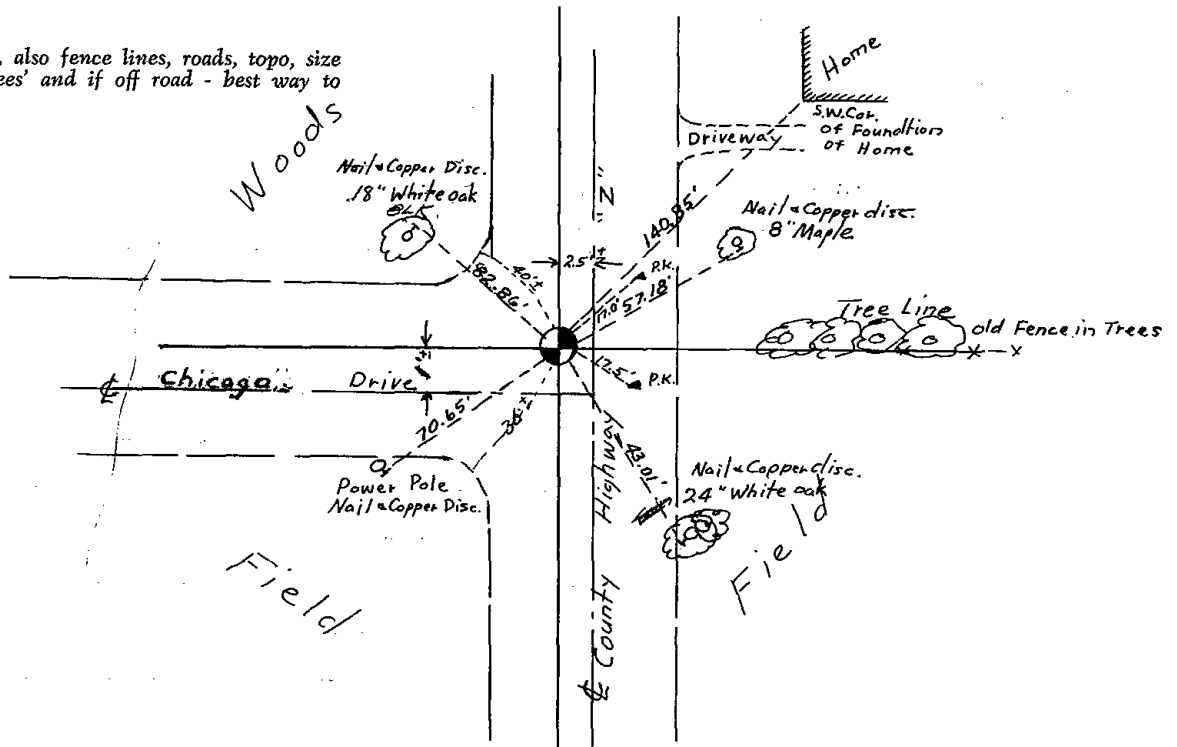
DATA SHOWN HERE ON CERTIFIED CORRECT:

Anthony B. Kiedrowski
 Registered Land Surveyor

DATE: April 13, 1981

TIE SKETCH

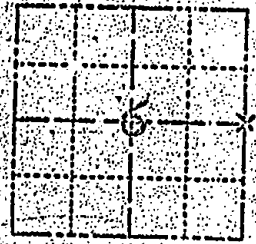
Show at least four ties, also fence lines, roads, topo, size and type of witness trees' and if off road - best way to arrive at corner.



Government Land Corner Certificate

ADAMS County
 TYPE OF MONUMENT Harrison
 STATE PLANE COORDINATES: N
I
 ELEVATION — M.S.L. DATUM: _____
 THETA ANGLE: _____
 FIELD BOOK: 77 PAGE 127
 DRAWN BY: Wloyd W. Scott

CORNER NO. 15
 SECTION 6
 TOWN 18
 RANGE 5



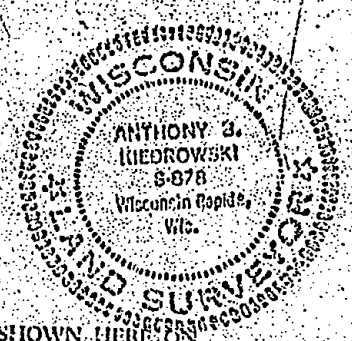
LOCATION
(Indicated by "X")

BASIS FOR MONUMENT LOCATION

Show into such as: History of corner; with reference to Vol. and pg., dates, surveyor; exact description of monument replaced; if location computed by taped or EDM traverse; landowner remarks, etc. (Use reverse side if necessary).

No record of any resurveys. Excavated with backhoe, found nothing. Corner is not set on a straight line, as this would not match any forty-line-occupation. Location of this corner dark squared stain, 3" x 8" in a circular area of disturbed soil. It appeared as though there was a stone at this location at one time. Since we also found a stone at the west 1/4 corner of this section, the stain was monumented and the location verified by EDM traverse.

SEAL:



DATA SHOWN HERE ON CERTIFIED CORRECT:

Anthony A. Hedrowski
Registered Land Surveyor

DATE: April 13, 1991

6-26-91 MC Ties OK

TIE SKETCH

Show at least four ties, also fence line, roads, topo, size and type of witness trees and if off road, best way to arrive at corner.

