

PUBLIC LAND SURVEY MONUMENT RECORD

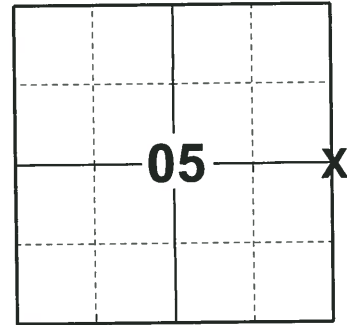
TYPE OF MONUMENT: HARRISON
 ADAMS COUNTY COORDINATES, NAD 83 (2007)

N. 253151.865

E. 504425.747

ELEVATION- _____ DATUM _____

FIELD WORK DATE: 10/15/2018



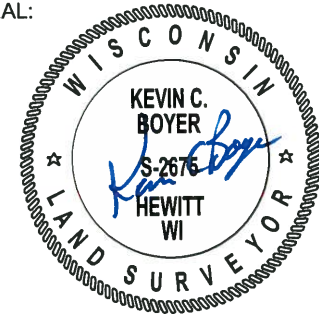
LOCATION
 (INDICATE CORNER BY "X")

BASIS FOR MONUMENT LOCATION

1977 - PLS 878 RAN EDM/T2 TRAVERSE AROUND SECTION 4 TO DETERMINE SEARCH AREAS AND ANALYZE POSSESSION. CALCULATED THE CORNER LOCATION PROPORTIONATE AND ON LINE BETWEEN THE NW CORNER AND THE SW CORNER OF SECTION 4. DID NOT DIG BECAUSE OF CUT IN ROAD. SET A HARRISON MONUMENT AT THE CALCULATED POSITION AND TIED OUT.

2018 - PLS 2675 FOUND A HARRISON MONUMENT 2" BELOW THE GROUND SURFACE, 2 WITNESS TREES, 1 WITNESS STUMP AND 1 PROPERTY IRON. THE MONUMENT AGREES WITH THE EXISTING WITNESS TREES AND WITNESS STUMP. ACCEPTED THE HARRISON MONUMENT AS THE CORNER LOCATION. SET 3 NEW TIES AND MEASURED TO THE TIES, WITNESS TREES, WITNESS STUMP AND PROPERTY IRON.

SEAL:



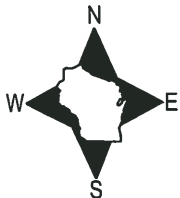
DATA SHOWN HERE ON THIS TIE SHEET IS CORRECT AND COMPLETE TO THE BEST OF MY KNOWLEDGE AND BELIEF.

PROFESSIONAL LAND SURVEYOR

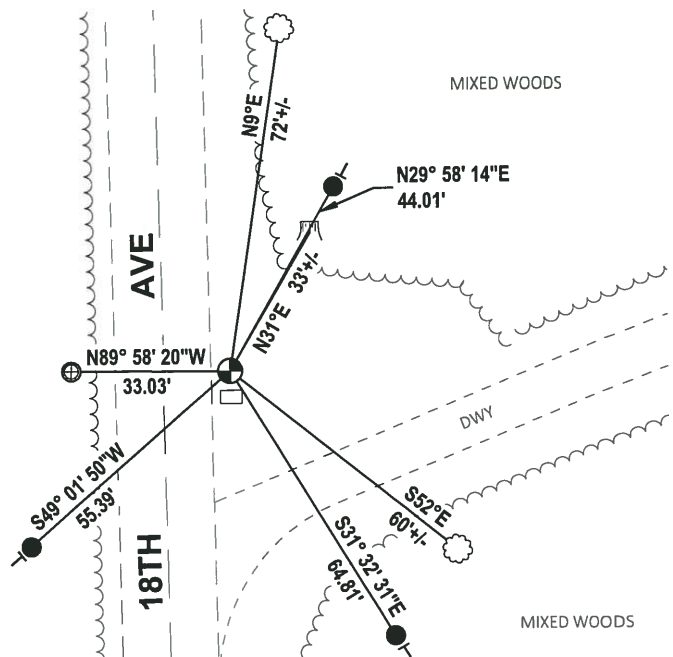
DATE 12/4/2018

- TIE SKETCH

NOTE: THE CORNER FALLS 14'± EAST OF THE CENTERLINE OF 18TH AVE AND 5'± NORTH OF MAILBOX #1348.



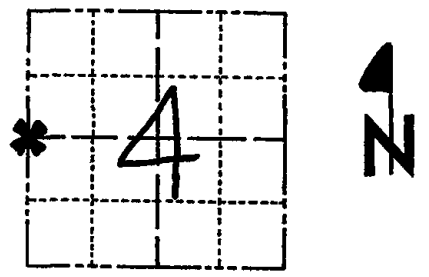
- SET 3/4" x 18" IRON REBAR, 1.50#/FT
- ⊕ FOUND 1" O.D. IRON PIPE
- ⊙ FOUND HARRISON MONUMENT
- VINYL "T" POST
- ☁ WITNESS TREE
- ☼ WITNESS TREE STUMP
- MAILBOX #1348



ADAMS COUNTY
Survey Monument Record

CORNER NO. 16
 SECTION 4
 TOWN 18
 RANGE 5

TYPE OF MONUMENT: HARRISON STANDARD
 STATE PLANE COORDINATES: N _____
 E _____
 ELEVATION — M.S.L. DATUM: _____
 THETA ANGLE: _____
 FIELD BOOK: No. 54 PAGE 7



LOCATION
 (Indicated by 'X')

BASIS FOR MONUMENT LOCATION

(Use reverse side if necessary)

Show info such as: History of corner, with reference to Vol. and pg, dates, surveyor; exact description of monument replaced; if location computed, by taped or EDM traverse; landowner remarks, etc.

Ran EDM/T2 traverse around Section 4 to determine search areas and analyze possession. Set corner proportionate and on line between NW corner and SW corner of Section 4.

SEAL:



Did not dig because of cut in road.

- OK 7-28-78 RK-SS
- OK 2-28-83 GR-SS
- OK - 9-8-92 - JG
- OK - 2-9-98 - JG
- 1-GONE, 2-5-03 - JG
- OK, 12-18-07 - JG

CERTIFIED CORRECT:

Anthony B. Kiedrowski
 Registered Land Surveyor
 DATE: 9/6/77

TIE SKETCH

(Show at least four ties) COR. IS 5' NORTH OF MAILBOX

