

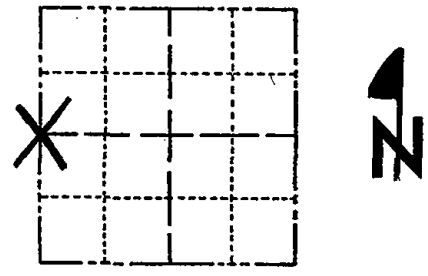


# Government Land Corner Certificate

MAR. SET  
4/21/80  
RN-SS

CORNER NO. 19  
SECTION 1  
TOWN 18  
RANGE 5

Adams County  
TYPE OF MONUMENT: HARRISON STANDARD *Temp. P. nail to be replaced w/ 1/2" rod*  
STATE PLANE COORDINATES: N \_\_\_\_\_  
E \_\_\_\_\_  
ELEVATION — M.S.L. DATUM: \_\_\_\_\_  
THETA ANGLE: \_\_\_\_\_  
FIELD BOOK: 75 PAGE 101  
DRAWN BY: R. NUBER



LOCATION  
(Indicated by 'X')

## BASIS FOR MONUMENT LOCATION

Show info such as: History of corner, with reference to Vol. and pg., dates, surveyor; exact description of monument replaced; if location computed, by taped or EDM traverse; landowner remarks, etc. (Use reverse side if necessary)

Set corner proportionate distance as per original notes, Adams County Surveyor Records.

SEAL:



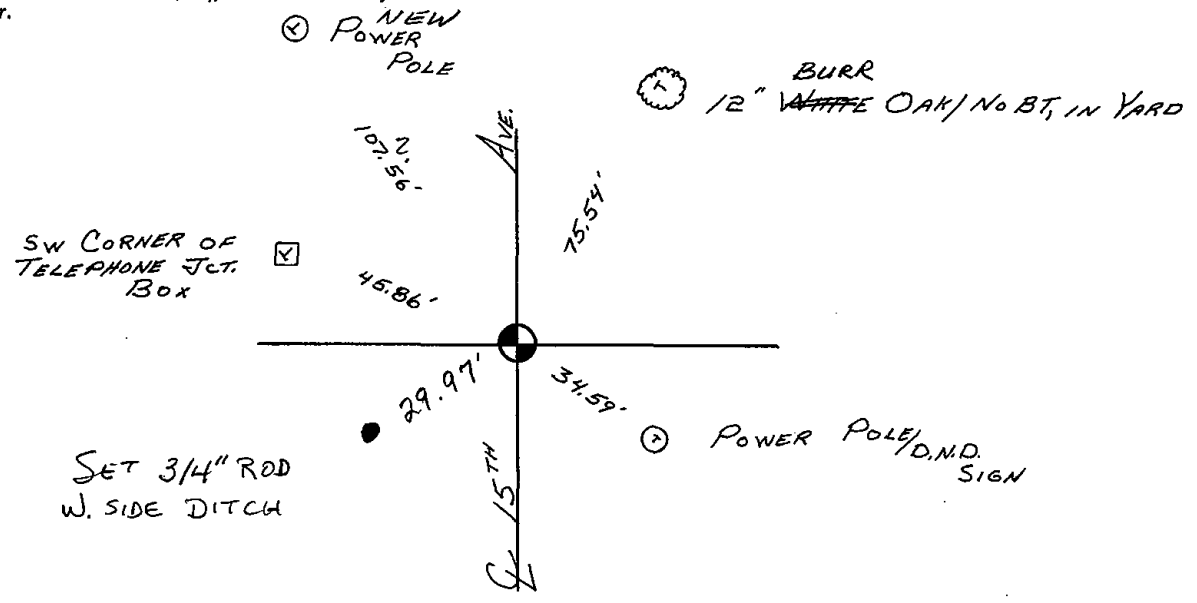
DATA SHOWN HERE ON  
CERTIFIED CORRECT

*Kent B. Heppe*  
Registered Land Surveyor

DATE: Jan. 18, 1980

## TIE SKETCH

Show at least four ties, also fence lines, roads, topo, size and type of witness trees' and if off road - best way to arrive at corner.



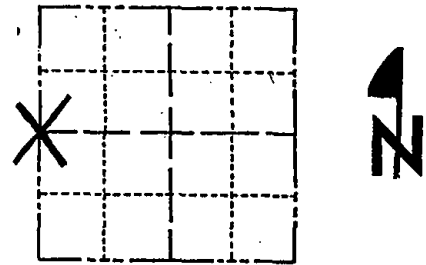


# Government Land Corner Certificate

MIR. SET  
1/21/80  
111-22

CORNER NO. 19  
SECTION 1  
TOWN 18  
RANGE 5

Adams County  
TYPE OF MONUMENT: HARRISON STANDARD  
STATE PLANE COORDINATES: N \_\_\_\_\_  
E \_\_\_\_\_  
ELEVATION — M.S.L. DATUM: \_\_\_\_\_  
THETA ANGLE: \_\_\_\_\_  
FIELD BOOK: 75 PAGE 101  
DRAWN BY: R. NUBER



LOCATION  
(Indicated by 'X')

## BASIS FOR MONUMENT LOCATION

Show info such as: History of corner, with reference to Vol. and pg., dates, surveyor; exact description of monument replaced; if location computed, by taped or EDM traverse; landowner remarks, etc. (Use reverse side if necessary)

Set corner proportionate distance as per original notes, Adams County Surveyor Records.

SEAL:



DATA SHOWN HERE ON  
CERTIFIED CORRECT.

*Kent B. Heppe*  
Registered Land Surveyor

DATE: Jan. 18, 1980

19 FEB 04 - MON OK / NEW TIE SH. MK

## TIE SKETCH

Show at least four ties, also fence lines, roads, topo, size and type of witness trees' and if off road - best way to arrive at corner.

