

6
SECTION

18
TOWN

05
RANGE

ADAMS COUNTY

COUNTY CORNER NO: 22

ROMPORTOL ID: 41805060020

PUBLIC LAND SURVEY MONUMENT RECORD

TYPE OF MONUMENT: HARRISON

ADAMS COUNTY COORDINATES, NAD 83 (2007)

N. 250576.750

E. 496560.778

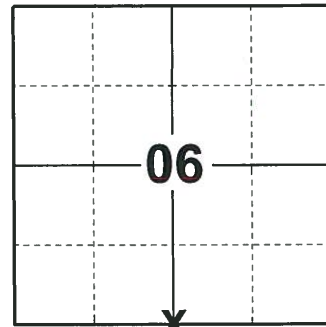
ELEVATION- - - DATUM - -

FIELD WORK DATE: 10/15/2018

BASIS FOR MONUMENT LOCATION

1981 - PLS 878 FOUND NO EVIDENCE OF A MONUMENT OR BEARING TREES. ZENUS WISE, COUNTY SURVEYOR WAS AT THIS CORNER IN 1869. HE RAN FROM HERE TO THE SE CORNER ONLY, MEASURING 2632.08'. SINCE A PRO-RATED STRAIGHT LINE WOULD HAVE MISSED THE FENCE CORNER BY MORE THAN 20'. ACCEPTED THE FENCE CORNER AS EVIDENCE OF WISE SURVEY. SET A HARRISON MONUMENT AT THE CORNER LOCATION AND TIED OUT.

2018 - PLS 2675 FOUND A HARRISON MONUMENT FLUSH WITH THE GROUND SURFACE AND 2 WITNESS TREES. THE MONUMENT AGREES WITH THE EXISTING WITNESS TREES. ACCEPTED THE HARRISON MONUMENT AS THE CORNER LOCATION. SET 4 NEW TIES AND MEASURED TO THE TIES AND WITNESS TREES.



LOCATION

(INDICATE CORNER BY "X")

SEAL:



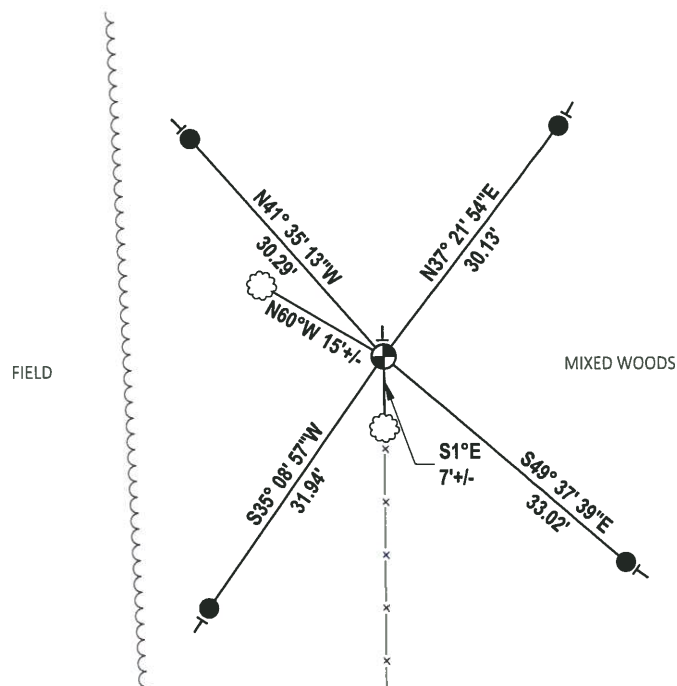
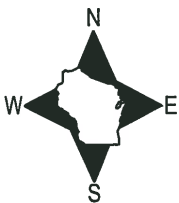
DATA SHOWN HERE ON THIS TIE SHEET IS CORRECT AND COMPLETE TO THE BEST OF MY KNOWLEDGE AND BELIEF.

PROFESSIONAL LAND SURVEYOR

DATE 12/4/2018

- TIE SKETCH

NOTE: THE CORNER FALLS 26± EAST OF THE EDGE OF THE FIELD.

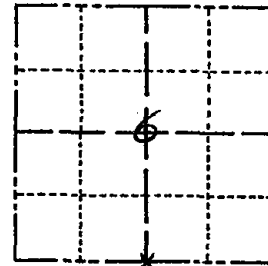


- SET 3/4" x 18" IRON REBAR, 1.50#/FT
- ⊕ FOUND HARRISON MONUMENT
- VINYL "T" POST
- ☁ WITNESS TREE

Government Land Corner Certificate

ADAMS County
 TYPE OF MONUMENT: Harrison
 STATE PLANE COORDINATES: N _____
 E _____
 ELEVATION — M.S.L. DATUM: _____
 THETA ANGLE: _____
 FIELD BOOK: 77 PAGE 129
 DRAWN BY: Lloyd W. Scott

CORNER NO. 22
 SECTION 6
 TOWN 18
 RANGE 5



LOCATION
(Indicated by 'X')

BASIS FOR MONUMENT LOCATION

Show info such as: History of corner, with reference to Vol. and pg., dates, surveyor; exact description of monument replaced; if location computed, by taped or EDM traverse; landowner remarks, etc. (Use reverse side if necessary)

SEAL:



Could find no evidence of a monument or bearing trees. Zenus Wise, county surveyor was at this corner in 1869. He ran from here to the SE corner only, measuring 2632.08'. Since a pro-rated straight line would have missed the fence corner by more than 20', I accepted the fence co-ner as evidence of Wise' survey, and monumented same.

DATA SHOWN HERE ON
CERTIFIED CORRECT:

Anthony B. Kiedrowski
Registered Land Surveyor

DATE: April 13, 1981

TIE SKETCH

Show at least four ties, also fence lines, roads, topo, size and type of witness trees' and if off road - best way to arrive at corner.

