

10  
SECTION    18  
TOWN    05  
RANGE

# ADAMS COUNTY

COUNTY CORNER NO: 38  
ROMPORTOL ID: 41805102000

## PUBLIC LAND SURVEY MONUMENT RECORD

TYPE OF MONUMENT: HARRISON  
ADAMS COUNTY COORDINATES, NAD 83 (2007)

N. 247848.577

E. 515125.700

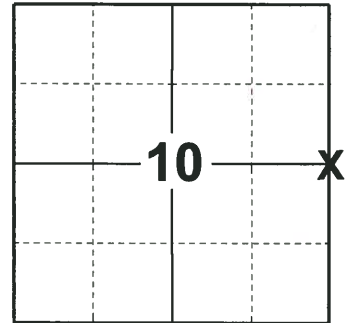
ELEVATION- - - - DATUM - - - -

FIELD WORK DATE: 10/18/2018

### BASIS FOR MONUMENT LOCATION

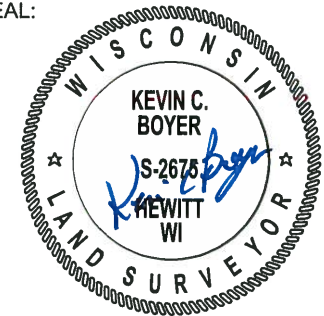
1980 - PLS 878 EXCAVATED WITH A BACKHOE AND FOUND STAIN FROM 6" DIA DUG IN WOOD POST. NO RECORD OF ANY RESURVEYS. VERIFIED THE CORNER LOCATION BY EDM-T2 TRAVERSE. SET A HARRISON MONUMENT AT THE CORNER LOCATION AND TIED OUT.

2018 - PLS 2675 FOUND A HARRISON MONUMENT 4" BELOW THE ROAD SURFACE AND 1 WITNESS. THE MONUMENT AGREES WITH THE EXISTING WITNESS. ACCEPTED THE HARRISON MONUMENT AS THE CORNER LOCATION. SET 4 NEW TIES AND MEASURED TO THE TIES AND WITNESS.



**LOCATION**  
(INDICATE CORNER BY "X")

SEAL:



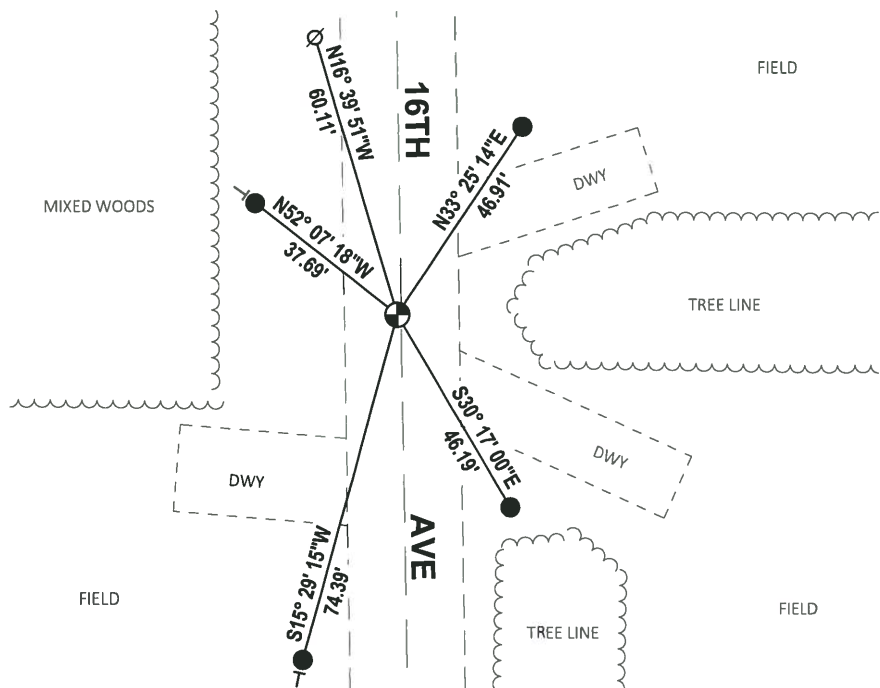
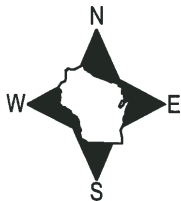
DATA SHOWN HERE ON THIS TIE SHEET IS CORRECT AND COMPLETE TO THE BEST OF MY KNOWLEDGE AND BELIEF.

PROFESSIONAL LAND SURVEYOR

DATE 12/4/2018

### TIE SKETCH

NOTE: THE CORNER FALLS 1± WEST OF THE CENTERLINE OF 16TH AVE.

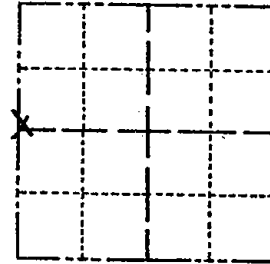


- SET 3/4" x 18" IRON REBAR, 1.50#/FT
- ⊕ FOUND HARRISON MONUMENT
- ⊘ WITNESS POWER POLE
- VINYL "T" POST

# Government Land Corner Certificate

ADAMS County  
 TYPE OF MONUMENT: HARRISON  
 STATE PLANE COORDINATES: N \_\_\_\_\_  
 E \_\_\_\_\_  
 ELEVATION — M.S.L. DATUM: \_\_\_\_\_  
 THETA ANGLE: \_\_\_\_\_  
 FIELD BOOK: (102) PAGE (75)  
 DRAWN BY: S KMIEC

CORNER NO. 38  
 SECTION 11  
 TOWN 18  
 RANGE 5



LOCATION  
 (Indicated by 'X')

SEAL:



DATA SHOWN HERE ON  
 CERTIFIED CORRECT:

*Anthony B. Kiedrowski*  
 Registered Land Surveyor

DATE: 8/25/80

## BASIS FOR MONUMENT LOCATION

Show info such as: History of corner, with reference to Vol. and pg., dates, surveyor; exact description of monument replaced; if location computed, by taped or EDM traverse; landowner remarks, etc. (Use reverse side if necessary)

Excavated with backhoe. Found stain from 6" dia dug in wood post. No record of any resurveys. Location verified by EDM-t/2 traverse. Replaced post with Harrison.

## TIE SKETCH

Show at least four ties, also fence lines, roads, topo, size and type of witness trees and if off road - best way to arrive at corner.

