

10 SECTION    18 TOWN    05 RANGE

# ADAMS COUNTY

COUNTY CORNER NO: 49  
 ROMPORTOL ID: 4180510000

## PUBLIC LAND SURVEY MONUMENT RECORD

TYPE OF MONUMENT: HARRISON  
 ADAMS COUNTY COORDINATES, NAD 83 (2007)

N. 245217.456

E. 515166.600

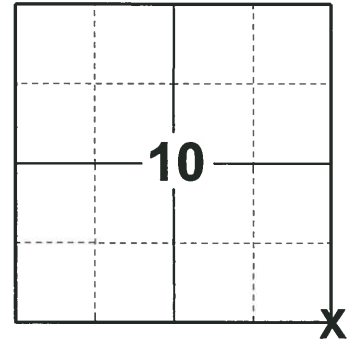
ELEVATION- \_\_\_\_\_ DATUM \_\_\_\_\_

FIELD WORK DATE: 10/18/2018

### BASIS FOR MONUMENT LOCATION

1974 - PLS 1103 RAN TRAVERSE OF ENTIRE SECTION 15 AND TIED IT TO ALL EXISTING SUBDIVISIONS IN THE SECTION. FOUND NO EVIDENCE AS TO THE LOCATION OF THE ORIGINAL CORNER OR ANY OF ITS ACCESSORIES. SET A HARRISON MONUMENT AT THE CORNER LOCATION AND TIED OUT.

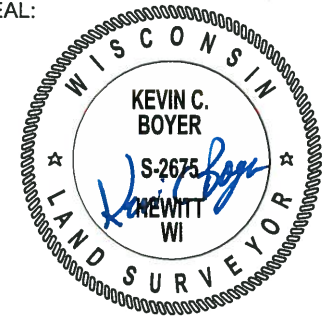
2018 - PLS 2675 FOUND A HARRISON MONUMENT FLUSH WITH THE GROUND SURFACE AND 3 WITNESSES. THE MONUMENT AGREES WITH THE EXISTING WITNESSES. ACCEPTED THE HARRISON MONUMENT AS THE CORNER LOCATION. SET 4 NEW TIES AND MEASURED TO THE TIES AND WITNESSES.



LOCATION

(INDICATE CORNER BY "X")

SEAL:



DATA SHOWN HERE ON THIS TIE SHEET IS CORRECT AND COMPLETE TO THE BEST OF MY KNOWLEDGE AND BELIEF.

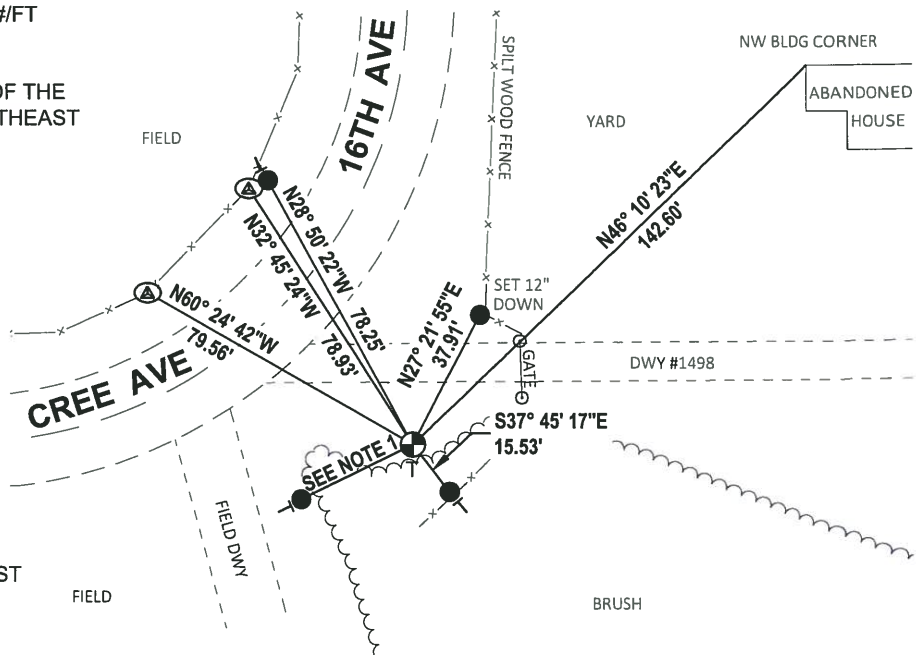
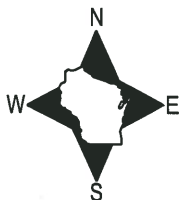
PROFESSIONAL LAND SURVEYOR

DATE 12/4/2018

### - TIE SKETCH

NOTE 1: SET A 3/4" x 18" IRON REBAR, 1.50#/FT  
 S63° 57' 51"W, 32.44' FROM THE CORNER.

NOTE 2: THE CORNER FALLS 21± SOUTH OF THE  
 CENTERLINE OF DWY #1498 AND 56± SOUTHEAST  
 OF THE CENTERLINE OF CREE AVE.



- SET 3/4" x 18" IRON REBAR, 1.50#/FT
- ⊕ FOUND RAILROAD SPIKE IN FENCE POST
- ⊗ FOUND HARRISON MONUMENT
- VINYL "T" POST

ADAMS COUNTY

Survey Monument Record

TYPE OF MONUMENT: Harrison Monument

STATE PLANE COORDINATES: N \_\_\_\_\_

E \_\_\_\_\_

ELEVATION — M.S.L. DATUM: \_\_\_\_\_

THETA ANGLE: \_\_\_\_\_

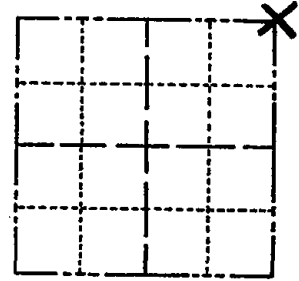
FIELD BOOK: \_\_\_\_\_ PAGE \_\_\_\_\_

CORNER NO. 431 (49)

SECTION 15

TOWN 18

RANGE 5



LOCATION (Indicated by 'X')

BASIS FOR MONUMENT LOCATION

(Use reverse side if necessary)

Show info such as: History of corner, with reference to Vol. and pg, dates, surveyor; exact description of monument replaced; if location computed, by taped or EDM traverse; landowner remarks, etc.

Ran traverse of entire Section 15 and tied in to all existing subdivision in section. Could find no evidence as to the location of the original corner or any of its accessories.

Monumented corner accordingly.

SEAL:



CERTIFIED CORRECT:

Dale C. Hagen Registered Land Surveyor

DATE: July 30, 1974

OK 7-8-78 RK-SS  
OK 3-1-83 GR-SS

1-GONE, 1-NEW TIE, MON OK, 8-21-92-JG-BS  
ALL OK 2-5-98-JG  
1-GONE, 2-NEW, MON. OK 5-1-03-JG  
OK, 12-13-07-JG

TIE SKETCH

(Show at least four ties)

NOTE:

Ties in trees to nail in disc. NAIL IN Those indicated by 'BT' have R.R. TIES letters BT scribed in face. FENCE POST

