

18 SECTION 18 TOWN 05 RANGE

ADAMS COUNTY

COUNTY CORNER NO: 55
 ROMPORTOL ID: 41805182000

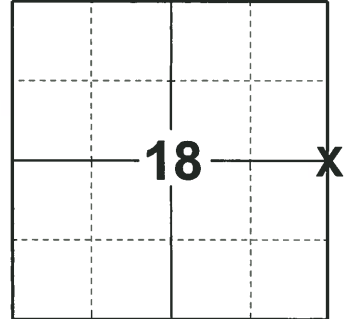
PUBLIC LAND SURVEY MONUMENT RECORD

TYPE OF MONUMENT: HARRISON
 ADAMS COUNTY COORDINATES, NAD 83 (2007)

N. 242576.484
 E. 499325.276

ELEVATION- _____ DATUM _____

FIELD WORK DATE: 10/25/2018



LOCATION

(INDICATE CORNER BY "X")

BASIS FOR MONUMENT LOCATION

1974 - PLS 878 EXCAVATED WITH A BACKHOE AND FOUND REMNANT OF WOOD POST. THE POST WAS CALLED FOR IN OLD COUNTY SURVEYOR RECORDS. SET A HARRISON MONUMENT AT THE CORNER LOCATION AND TIED OUT.

2018 - PLS 2675 FOUND A HARRISON MONUMENT 4" BELOW THE ROAD SURFACE AND 1 TIE. THE MONUMENT AGREES WITH THE EXISTING TIE. ACCEPTED THE HARRISON MONUMENT AS THE CORNER LOCATION. SET 3 NEW TIES AND MEASURED TO THE TIES.

SEAL:

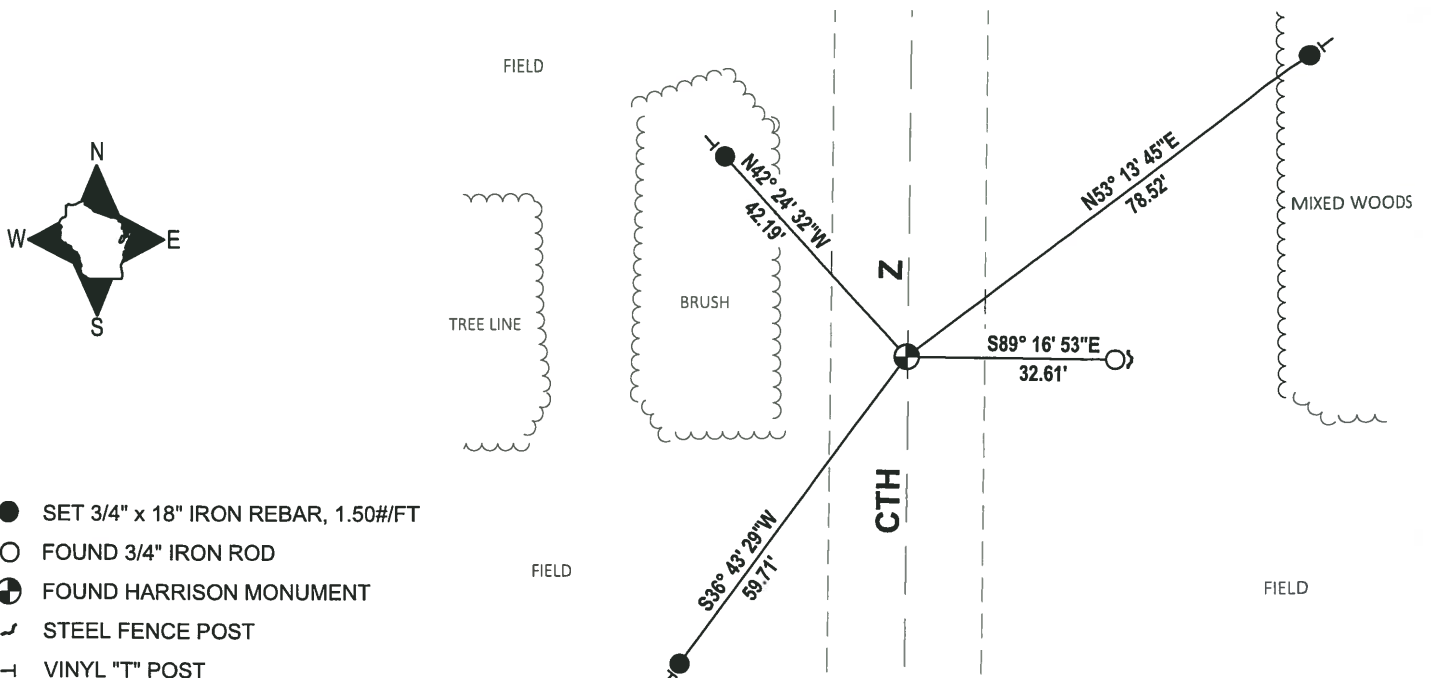


DATA SHOWN HERE ON THIS TIE SHEET IS CORRECT AND COMPLETE TO THE BEST OF MY KNOWLEDGE AND BELIEF.

PROFESSIONAL LAND SURVEYOR

DATE 12/4/2018

- TIE SKETCH



- SET 3/4" x 18" IRON REBAR, 1.50#/FT
- FOUND 3/4" IRON ROD
- ⊙ FOUND HARRISON MONUMENT
- ↗ STEEL FENCE POST
- VINYL "T" POST

ADAMS COUNTY

Survey Monument Record

TYPE OF MONUMENT: Harrison Standard

STATE PLANE COORDINATES: N _____

E _____

ELEVATION — M.S.L. DATUM: _____

THETA ANGLE: _____

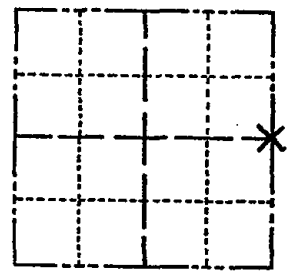
FIELD BOOK: _____ PAGE _____

CORNER NO. 435

SECTION 18

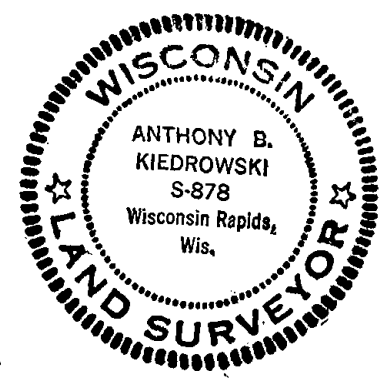
TOWN 18

RANGE 5



LOCATION
(Indicated by 'X')

SEAL:



BASIS FOR MONUMENT LOCATION

(Use reverse side if necessary)

Show info such as: History of corner, with reference to Vol. and pg, dates, surveyor; exact description of monument replaced; if location computed, by taped or EDM traverse; landowner remarks, etc.

Excavated with backhoe. Found remnant of wood post. See picture. Post called for in old county surveyor records.

- OK 11-17-78 RN-SS
- OK 3-1-83 GR-SS
- 1-TIE GONE, 1-NEW TIE, MON. OK, 8-21-92 JG-BS
- 1-NEW, 2-5-98 -JG
- OK 2-5-03-JG
- OK 12-13-07-JG

CERTIFIED CORRECT:

Anthony B. Kiedrowski
Registered Land Surveyor

DATE: July 30, 1974

TIE SKETCH All ties to nail and disc.

(Show at least four ties)

