

16 SECTION    18 TOWN    05 RANGE

# ADAMS COUNTY

COUNTY CORNER NO: 57  
ROMPORTOL ID: 41805162000

## PUBLIC LAND SURVEY MONUMENT RECORD

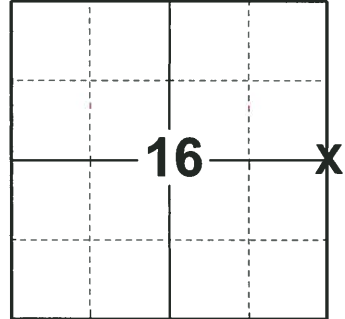
TYPE OF MONUMENT: HARRISON  
ADAMS COUNTY COORDINATES, NAD 83 (2007)

N. 242577.361

E. 509884.985

ELEVATION-\_\_\_\_ DATUM\_\_\_\_\_

FIELD WORK DATE: 10/25/2018



**LOCATION**  
(INDICATE CORNER BY "X")

### BASIS FOR MONUMENT LOCATION

1974 - PLS 1103 TRAVERSED SECTION 15 AND CALCULATED THE CORNER BY EXTENDING AND DOUBLING THE DISTANCE ON THE WEST LINE OF THE SOUTHWEST QUARTER OF THE SOUTHWEST QUARTER OF THIS SECTION, AS SET BY A PLAT IN THAT FORTY DONE BY WILLIAM C. ROHDE. SET A STANDARD HARRISON MONUMENT AT THE CALCULATED LOCATION AND TIED OUT.

2018 - PLS 2675 FOUND A HARRISON MONUMENT FLUSH WITH THE GROUND SURFACE AND 1 WITNESS. THE MONUMENT AGREES WITH THE EXISTING WITNESS. ACCEPTED THE HARRISON MONUMENT AS THE CORNER LOCATION. SET 4 NEW TIES AND MEASURED TO THE TIES AND WITNESS.

SEAL:



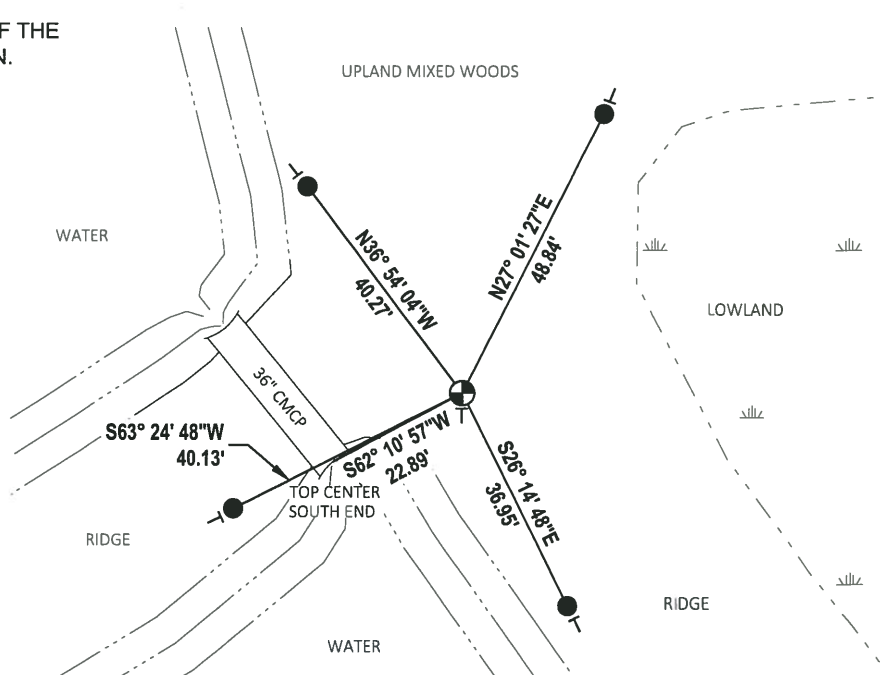
DATA SHOWN HERE ON THIS TIE SHEET IS CORRECT AND COMPLETE TO THE BEST OF MY KNOWLEDGE AND BELIEF.

PROFESSIONAL LAND SURVEYOR

DATE 12/4/2018

### - TIE SKETCH

NOTE: THE CORNER FALLS 550'± SOUTH OF THE CREE DR AND 17TH AVE "T" INTERSECTION.



- SET 3/4" x 18" IRON REBAR, 1.50#/FT
- ⊕ FOUND HARRISON MONUMENT
- ┆ VINYL "T" POST

ADAMS COUNTY

Survey Monument Record

TYPE OF MONUMENT: HARRISON MONUMENT

STATE PLANE COORDINATES: N \_\_\_\_\_

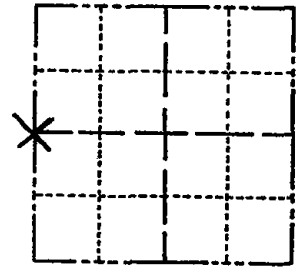
E \_\_\_\_\_

ELEVATION — M.S.L. DATUM: \_\_\_\_\_

THETA ANGLE: \_\_\_\_\_

FIELD BOOK: \_\_\_\_\_ PAGE \_\_\_\_\_

CORNER NO. 434 <sup>(57)</sup>  
SECTION 15  
TOWN 18  
RANGE 5



LOCATION  
(Indicated by 'X')

SEAL:

BASIS FOR MONUMENT LOCATION

(Use reverse side if necessary)

Show info such as: History of corner, with reference to Vol. and pg, dates, surveyor; exact description of monument replaced; if location computed, by taped or EDM traverse; landowner remarks, etc.

Traversed Section 15 and set corner by extending and doubling the distance on the West line of the Southwest Quarter of the Southwest Quarter of this Section, as set by a plat in that Forty done by William C. Rohde.

Set Standard Harrison Monument.



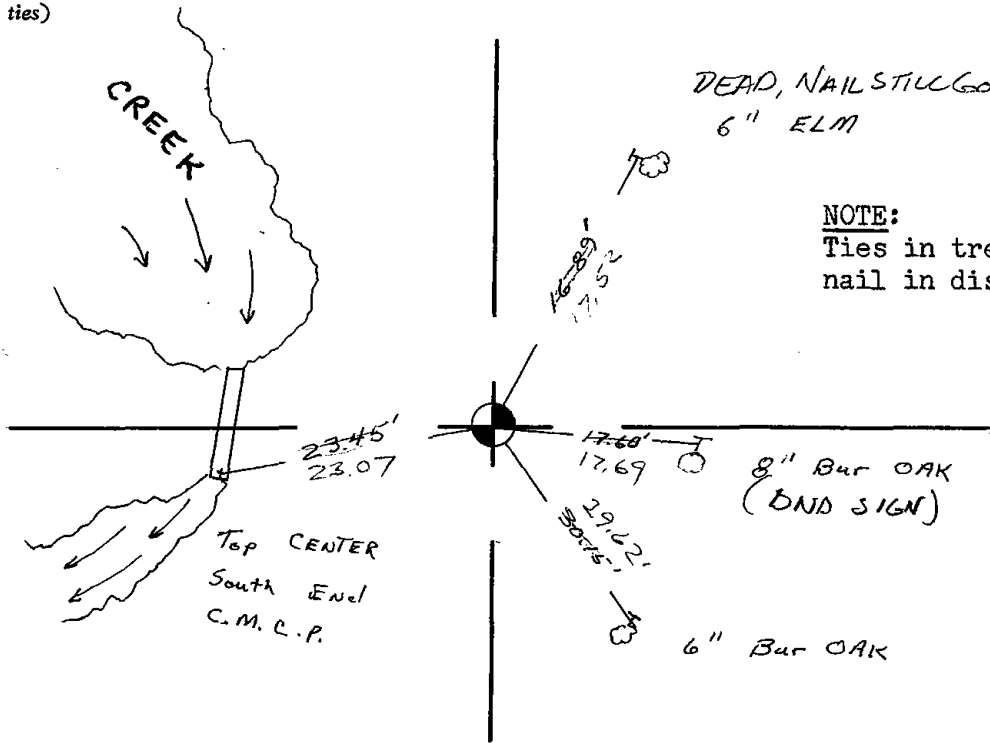
- OK 78-78 RK SS
- " 3-16-83 GR-SS
- OK 8-21-92 JG-BS
- OK, 2-18-98-JG
- OK, 2-5-03-JG

CERTIFIED CORRECT:

Dale C. Hagen  
Registered Land Surveyor  
DATE: July 31, 1974

TIE SKETCH 12-13-07-JG

(Show at least four ties)



NOTE:  
Ties in trees to nail in disc.