

15  
SECTION

18  
TOWN

05  
RANGE

# ADAMS COUNTY

COUNTY CORNER NO: 58

ROMPORTOL ID: 41805152000

## PUBLIC LAND SURVEY MONUMENT RECORD

TYPE OF MONUMENT: HARRISON  
ADAMS COUNTY COORDINATES, NAD 83 (2007)

N. 242566.549

E. 515144.410

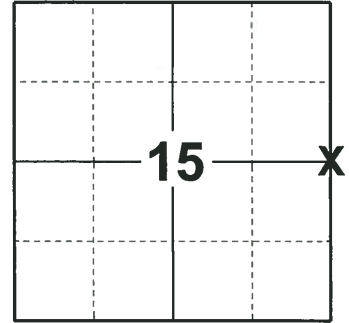
ELEVATION- \_\_\_\_\_ DATUM \_\_\_\_\_

FIELD WORK DATE: 10/19/2018

### BASIS FOR MONUMENT LOCATION

1974 - PLS 1103 FOUND A 2" IRON PIPE SET BY DON MULLOCK AS THE QUARTER CORNER FROM THE PLAT OF ARKDALE SHORES SUBDIVISION. RAN THE ENTIRE SECTION AND ANALYZED ALL EVIDENCE AVAILABLE. ACCEPTED THE 2" IRON PIPE AS THE CORNER LOCATION, REPLACED THE 2" IRON PIPE WITH A HARRISON MONUMENT AND TIED OUT.

2018 - PLS 2675 FOUND A HARRISON MONUMENT IN THE YARD SURFACE, 1 TIE AND 2 WITNESSES. THE MONUMENT AGREES WITH THE EXISTING TIE AND WITNESSES. ACCEPTED THE HARRISON MONUMENT AS THE CORNER LOCATION. SET 3 NEW TIES AND MEASURED TO THE TIES AND WITNESSES.



LOCATION  
(INDICATE CORNER BY "X")

SEAL:



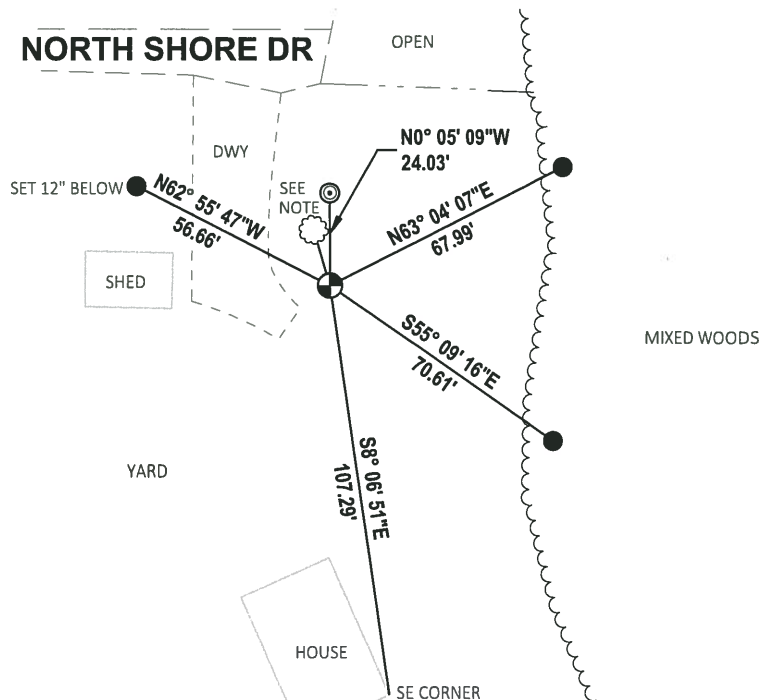
DATA SHOWN HERE ON THIS TIE SHEET IS CORRECT AND COMPLETE TO THE BEST OF MY KNOWLEDGE AND BELIEF.

PROFESSIONAL LAND SURVEYOR

DATE 12/4/2018

### - TIE SKETCH

NOTE: THE WITNESS TREE FALLS N16° 23' 34"W, 15'± FROM THE CORNER.



- SET 3/4" x 18" IRON REBAR, 1.50#/FT
- ⊙ FOUND 2" O.D. IRON PIPE W/CRIMPED TOP
- ⊕ FOUND HARRISON MONUMENT
- ☁ WITNESS TREE

# ADAMS COUNTY

## Survey Monument Record

TYPE OF MONUMENT: Harrison Monument

STATE PLANE COORDINATES: N \_\_\_\_\_

E \_\_\_\_\_

ELEVATION — M.S.L. DATUM: \_\_\_\_\_

THETA ANGLE: \_\_\_\_\_

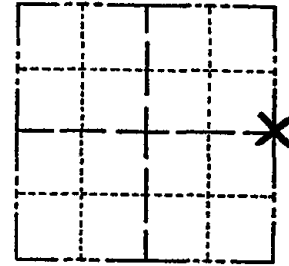
FIELD BOOK: \_\_\_\_\_ PAGE \_\_\_\_\_

CORNER NO. 432

SECTION 15

TOWN 18

RANGE 5



LOCATION  
(Indicated by 'X')

SEAL:



### BASIS FOR MONUMENT LOCATION

(Use reverse side if necessary)

Show info such as: History of corner, with reference to Vol. and pg, dates, surveyor; exact description of monument replaced; if location computed, by taped or EDM traverse; landowner remarks, etc.

Found 2" Iron pipe set by Don Mullock as Quarter corner from the plat of Ackdale Shores Subdivision.

Ran entire Section and analyzed all evidence available. Monumented corner with Harrison monument by replacing 2" Iron Pipe.

- OK 7-8-78 RK-SS
- OK 3-1-83 GR-SS
- OK 8-21-92 JG-B5
- OK 2-5-98-JG
- OK 5-20-3-JG
- OK 12-13-07-JG

CERTIFIED CORRECT:

Dale C. Hagen  
Registered Land Surveyor

DATE: July 30, 1974

### TIE SKETCH

(Show at least four ties)

NOTE: Ties in trees to nail in disc.  
Those trees marked 'BT' have letters BT scribed in face.

