

18 SECTION 18 TOWN 05 RANGE

ADAMS COUNTY

COUNTY CORNER NO: 62
 ROMPORTOL ID: 41805180020

PUBLIC LAND SURVEY MONUMENT RECORD

TYPE OF MONUMENT: HARRISON
 ADAMS COUNTY COORDINATES, NAD 83 (2007)

N. 239993.411

E. 496665.497

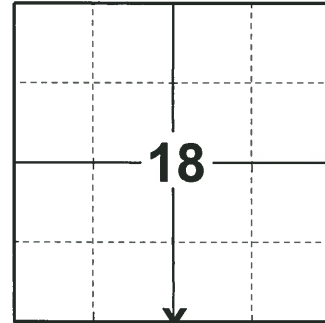
ELEVATION- _____ DATUM _____

FIELD WORK DATE: 10/25/2018

BASIS FOR MONUMENT LOCATION

1974 - PLS 878 EXCAVATED WITH A BACKHOE AND FOUND THE TOP OF A 4" x 6" x 12" POINTED SANDSTONE. LOWERED THE STONE AND SET A HARRISON ON TOP AND TIED OUT.

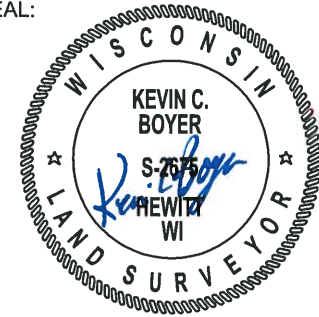
2018 - PLS 2675 FOUND A HARRISON MONUMENT 6" BELOW THE ROAD SURFACE, 1 TIE AND 2 WITNESSES. THE MONUMENT AGREES WITH THE EXISTING TIE AND WITNESSES. ACCEPTED THE HARRISON MONUMENT AS THE CORNER LOCATION. SET 4 NEW TIES AND MEASURED TO THE TIES AND WITNESSES.



LOCATION

(INDICATE CORNER BY "X")

SEAL:



DATA SHOWN HERE ON THIS TIE SHEET IS CORRECT AND COMPLETE TO THE BEST OF MY KNOWLEDGE AND BELIEF.

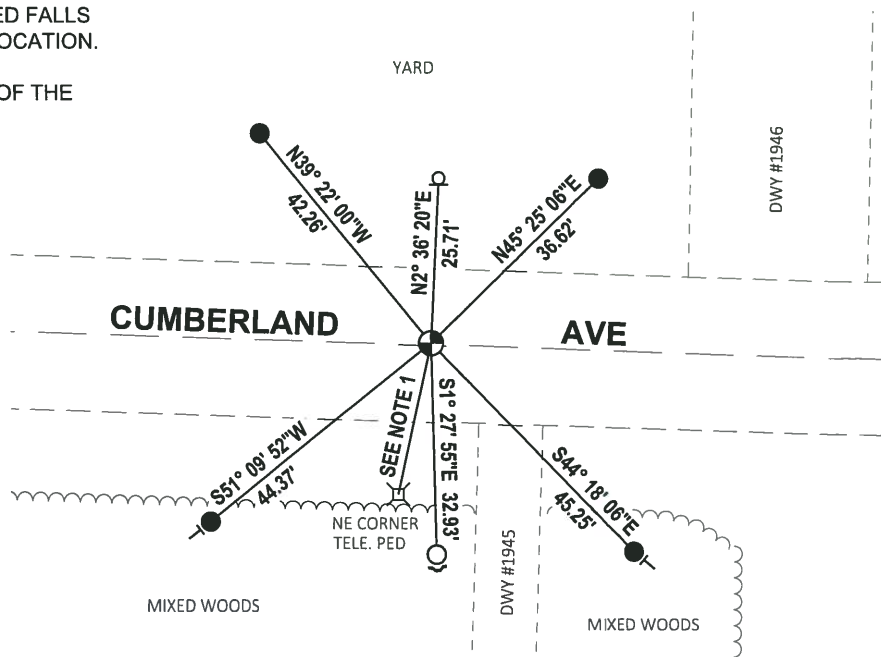
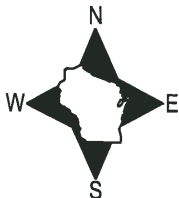
PROFESSIONAL LAND SURVEYOR

DATE 12/4/2018

- TIE SKETCH

NOTE 1: THE NE CORNER OF THE TELE. PED FALLS S12° 13' 05"W, 24.11' FROM THE CORNER LOCATION.

NOTE 2: THE CORNER FALLS 0.5'± NORTH OF THE CENTERLINE OF CUMBERLAND AVE.



- SET 3/4" x 18" IRON REBAR, 1.50#/FT
- FOUND 3/4" IRON ROD
- ⊕ FOUND HARRISON MONUMENT
- Ⓧ WITNESS TELE. CAUTION SIGN POST
- ↗ STEEL FENCE POST
- └ VINYL "T" POST

ADAMS COUNTY

Survey Monument Record

TYPE OF MONUMENT: Harrison Standard

STATE PLANE COORDINATES: N _____

E _____

ELEVATION — M.S.L. DATUM: _____

THETA ANGLE: _____

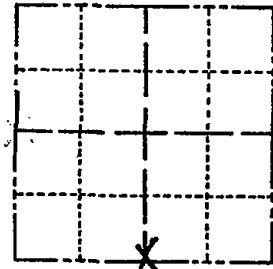
FIELD BOOK: _____ PAGE _____

CORNER NO. 437

SECTION 18

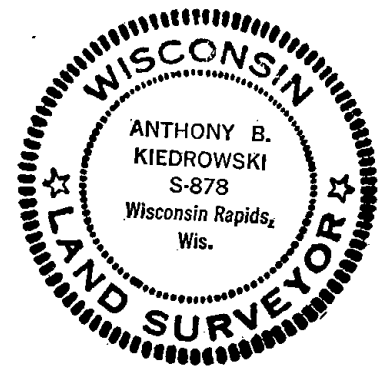
TOWN 18

RANGE 5



LOCATION
(Indicated by 'X')

SEAL:



BASIS FOR MONUMENT LOCATION

(Use reverse side if necessary)

Show info such as: History of corner, with reference to Vol. and pg, dates, surveyor; exact description of monument replaced; if location computed, by taped or EDM traverse; landowner remarks, etc.

Excavated with backhoe. Found 4" x 6" x 12" pointed sandstone. Lowered stone and set Harrison on top. See picture.

- OK 11-17-78 RN-SS
- OK 3-1-83 GR-SS
- OK 8-21-92 JG-B5
- 1-NEW, 2-5-98-JG
- 1-NEW, 2-5-03-JG
- OK, 12-13-01-JG

CERTIFIED CORRECT:

Anthony B. Kiedrowski
Registered Land Surveyor

DATE: July 30, 1974

TIE SKETCH

All ties to nail and disc.

(Show at least four ties)

