

17 SECTION    18 TOWN    05 RANGE

# ADAMS COUNTY

COUNTY CORNER NO: 65  
 ROMPORTOL ID: 41805170000

## PUBLIC LAND SURVEY MONUMENT RECORD

TYPE OF MONUMENT: HARRISON  
 ADAMS COUNTY COORDINATES, NAD 83 (2007)

N. 239931.285

E. 504643.619

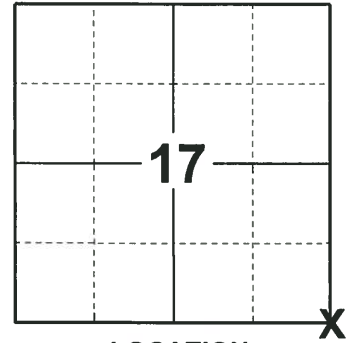
ELEVATION- \_\_\_\_\_ DATUM \_\_\_\_\_

FIELD WORK DATE: 10/25/2018

### BASIS FOR MONUMENT LOCATION

1978 - PLS 878 EXCAVATED WITH A BACKHOE AND FOUND A 6"x6"x12" WHITE SANDSTONE. LAID THE STONE FLAT, SET HARRISON ON TOP AND TIED OUT. COULD NOT LOWER STONE OTHERWISE BECAUSE OF HARD FROZEN CLAY. STONE CALLED FOR BY M.C. SMITH AUGUST 19, 1910, PER COL 1, PAGE 126 OF COUNTY SURVEYOR RECORDS.

2018 - PLS 2675 FOUND A HARRISON MONUMENT 6" BELOW THE ROAD SURFACE, 1 PROPERTY AND 2 WITNESSES. THE MONUMENT AGREES WITH THE EXISTING WITNESSES (SLOPE DISTANCE). ACCEPTED THE HARRISON MONUMENT AS THE CORNER LOCATION. SET 3 NEW TIES AND MEASURED TO THE TIES, PROPERTY IRON AND WITNESSES.



**LOCATION**  
 (INDICATE CORNER BY "X")

SEAL:



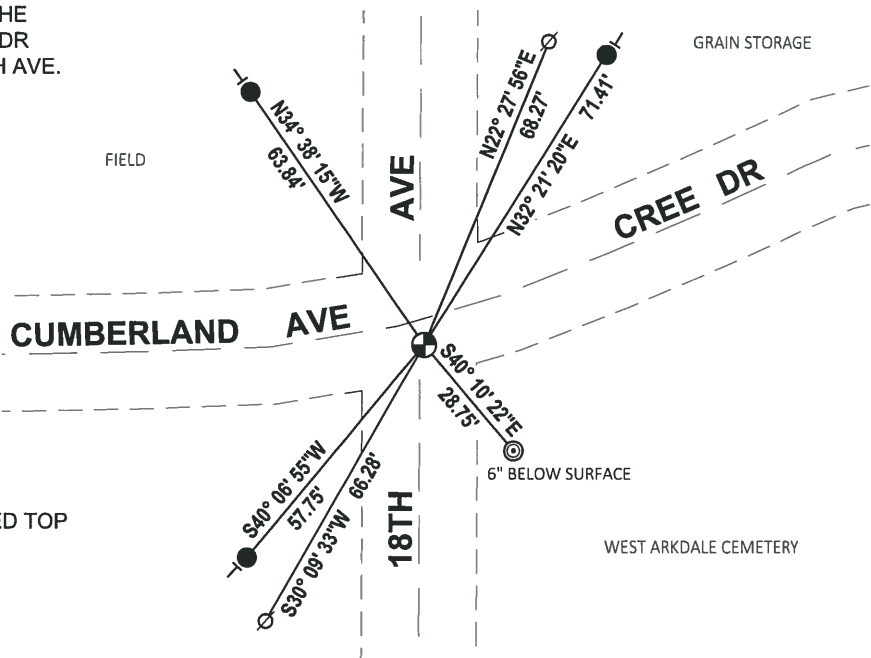
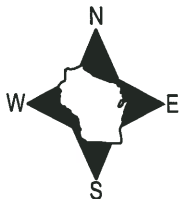
DATA SHOWN HERE ON THIS TIE SHEET IS CORRECT AND COMPLETE TO THE BEST OF MY KNOWLEDGE AND BELIEF.

PROFESSIONAL LAND SURVEYOR

DATE 12/4/2018

### - TIE SKETCH

NOTE: THE CORNER FALLS 5'± SOUTH OF THE CENTERLINE OF CUMBERLAND AVE/ CREE DR AND 1'± EAST OF THE CENTERLINE OF 18TH AVE.

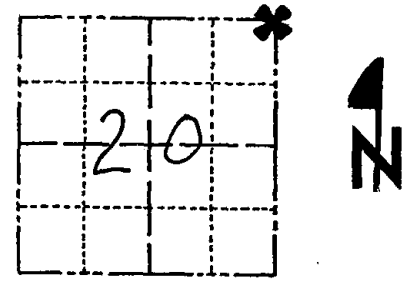


- SET 3/4" x 18" IRON REBAR, 1.50#/FT
- ◎ FOUND 2-3/8" O.D. IRON PIPE W/CRIMPED TOP
- ⊕ FOUND HARRISON MONUMENT
- ∅ WITNESS POWER POLE
- | VINYL "T" POST

# Government Land Corner Certificate

ADAMS County  
 TYPE OF MONUMENT: HARRISON STD.  
 STATE PLANE COORDINATES: N \_\_\_\_\_  
 E \_\_\_\_\_  
 ELEVATION — M.S.L. DATUM: \_\_\_\_\_  
 THETA ANGLE: \_\_\_\_\_  
 FIELD BOOK: \_\_\_\_\_ PAGE \_\_\_\_\_  
 DRAWN BY: SCOTT SORENSEN

CORNER NO. 65  
 SECTION 20  
 TOWN 18  
 RANGE 5



LOCATION  
 (Indicated by 'X')

## BASIS FOR MONUMENT LOCATION

Show info such as: History of corner, with reference to Vol. and pg., dates, surveyor; exact description of monument replaced; if location computed, by taped or EDM traverse; landowner remarks, etc. (Use reverse side if necessary)

Excavated with backhoe. Found 6x6x12" white sandstone. Laid stone flat, set Harrison on top. Could not lower stone otherwise because of hard frozen clay.  
 Stone called for by M.C. Smith Aug. 19, 1910, per Vol 1, page 126 of County Surveyor records.

SEAL:



DATA SHOWN HERE ON  
 CERTIFIED CORRECT:

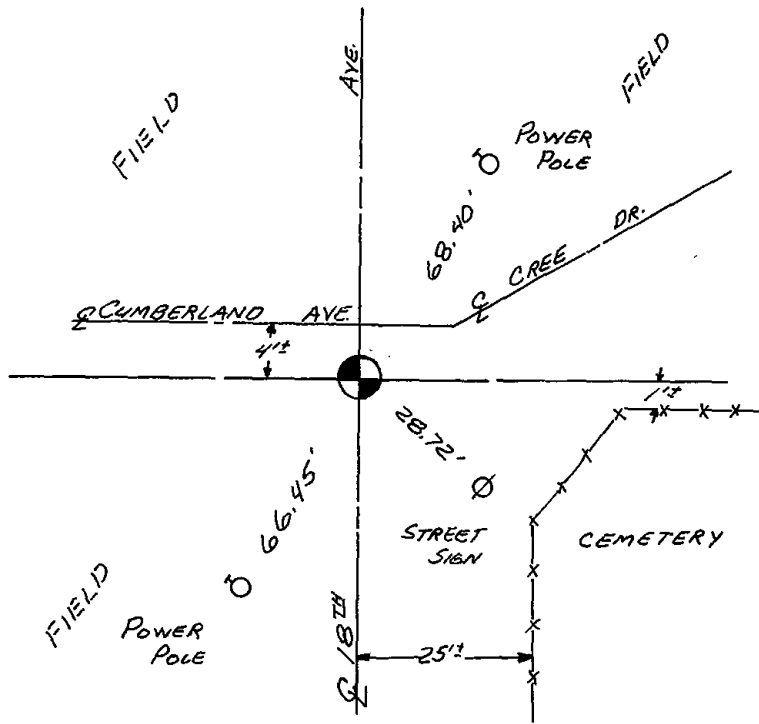
*Anthony B. Kiedrowski*  
 Registered Land Surveyor

DATE: 4/13/78

## TIE SKETCH

Show at least four ties, also fence lines, roads, topo, size and type of witness trees' and if off road - best way to arrive at corner.

Ties are to nail and cap.



## MAINTENANCE RECORD

Date	Init.	Remarks
3-1-83	GR-SS	OK
8-21-92	JG-BS	OK
2-5-98	JG	OK
2-5-03	JG	OK
12-13-07	JG	OK