

16  
SECTION

18  
TOWN

05  
RANGE

# ADAMS COUNTY

COUNTY CORNER NO: 66

ROMPORTOL ID: 41805160020

## PUBLIC LAND SURVEY MONUMENT RECORD

TYPE OF MONUMENT: CALCULATED POSITION  
ADAMS COUNTY COORDINATES, NAD 83 (2007)

N. 239937.456

E. 507256.617

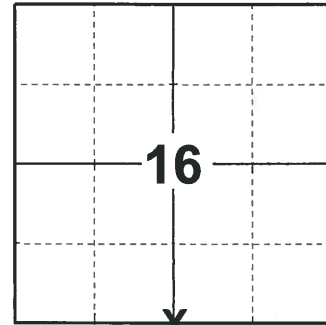
ELEVATION- \_\_\_\_\_ DATUM \_\_\_\_\_

FIELD WORK DATE: 10/17/2018

### BASIS FOR MONUMENT LOCATION

1981 - PLS 1167 TRAVERSED AREA FOR SEARCH LOCATION. CALCULATED THE CORNER MIDWAY ON A STRAIGHT LINE. SET WITNESS MONUMENTS ONLY.  
NOTE: THE CORNER ITSELF FALLS WITHIN THE BIG ROCHE A CRI.

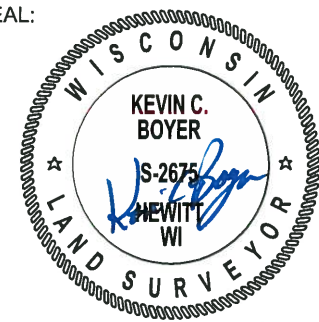
2018 - PLS 2675 FOUND BOTH OF THE WITNESS MONUMENTS AND BOTH AGREE WITH EACH OTHER FROM THE RECORD DISTANCE ON THE TIE SHEET DATED JUNE 1981. CALCULATED THE CORNER PER RECORD DISTANCES. SET 3 WITNESS TREES FOR EACH WITNESS MONUMENT.



LOCATION

(INDICATE CORNER BY "X")

SEAL:



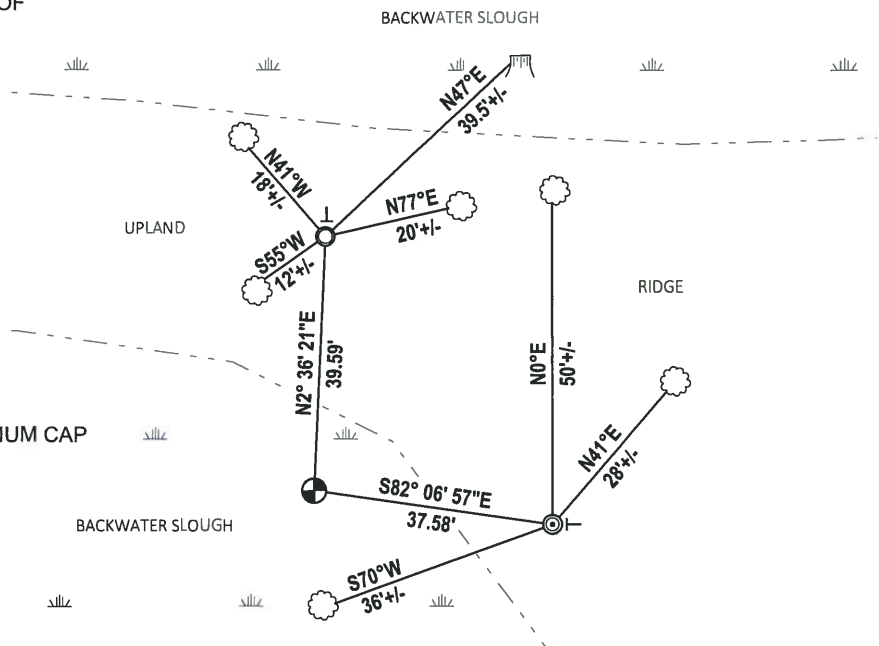
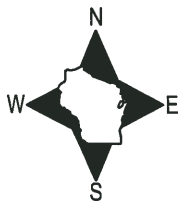
DATA SHOWN HERE ON THIS TIE SHEET IS CORRECT AND COMPLETE TO THE BEST OF MY KNOWLEDGE AND BELIEF.

PROFESSIONAL LAND SURVEYOR

DATE 12/4/2018

### TIE SKETCH

NOTE: THEE CORNER FALLS 100'± NORTH OF THE MAIN CHANNEL OF BIG ROCHE A CRI.

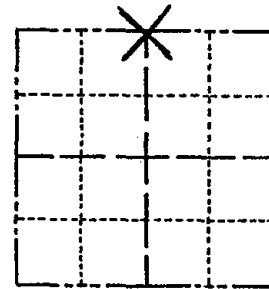


- ⊙ FOUND 1-1/4" O.D. IRON PIPE W/ALUMINUM CAP
- ⊙ FOUND 2-3/8" O.D. IRON PIPE
- ⊕ CALCULATED POSITION
- ┊ VINYL "T" POST
- 🌳 WITNESS TREE STUMP
- 🌳 WITNESS TREE

# Government Land Corner Certificate

ADAMS County  
 TYPE OF MONUMENT: Witness Monuments Only  
 STATE PLANE COORDINATES: N \_\_\_\_\_  
 E \_\_\_\_\_  
 ELEVATION — M.S.L. DATUM: \_\_\_\_\_  
 THETA ANGLE: \_\_\_\_\_  
 FIELD BOOK: LL PAGE \_\_\_\_\_  
 DRAWN BY: R. Nuber

CORNER NO. 66  
 SECTION 21  
 TOWN 18  
 RANGE 5



LOCATION  
(Indicated by 'X')

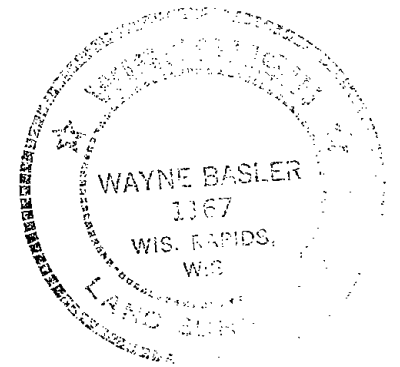
## BASIS FOR MONUMENT LOCATION

Show info such as: History of corner, with reference to Vol. and pg., dates, surveyor; exact description of monument replaced; if location computed, by taped or EDM traverse; landowner remarks, etc. (Use reverse side if necessary)

Traversed area for search location.  
 Set Corner midway on a straight line.

NOTE: The corner itself falls within Big Roche A Cri.

SEAL:



DATA SHOWN HERE ON  
 CERTIFIED CORRECT:

Wayne Basler  
 Registered Land Surveyor

DATE: June - 1981

## TIE SKETCH

Show at least four ties, also fence lines, roads, topo, size and type of witness trees and if off road - best way to arrive at corner.

