

20  
SECTION

18  
TOWN

05  
RANGE

# ADAMS COUNTY

COUNTY CORNER NO: 76

ROMPORTOL ID: 41805202000

## PUBLIC LAND SURVEY MONUMENT RECORD

TYPE OF MONUMENT: HARRISON

ADAMS COUNTY COORDINATES, NAD 83 (2007)

N. 237291.391

E. 504651.655

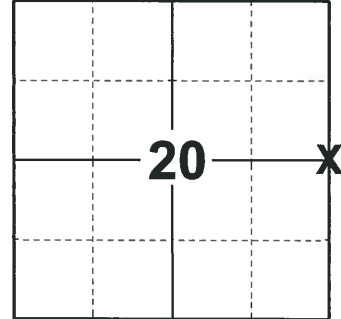
ELEVATION-        DATUM       

FIELD WORK DATE: 11/01/2018

### BASIS FOR MONUMENT LOCATION

1971 - PLS 981 FOUND NAIL, REPLACED WITH 30" HARRISON MONUMENT AND TIED OUT.

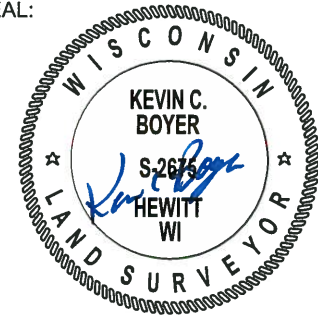
2018 - PLS 2675 FOUND A HARRISON MONUMENT 14" BELOW THE ROAD SURFACE AND 1 TIE. THE MONUMENT AGREES WITH THE EXISTING TIE. ACCEPTED THE HARRISON MONUMENT AS THE CORNER LOCATION. SET 3 NEW TIES AND MEASURED TO THE TIES.



### LOCATION

(INDICATE CORNER BY "X")

SEAL:



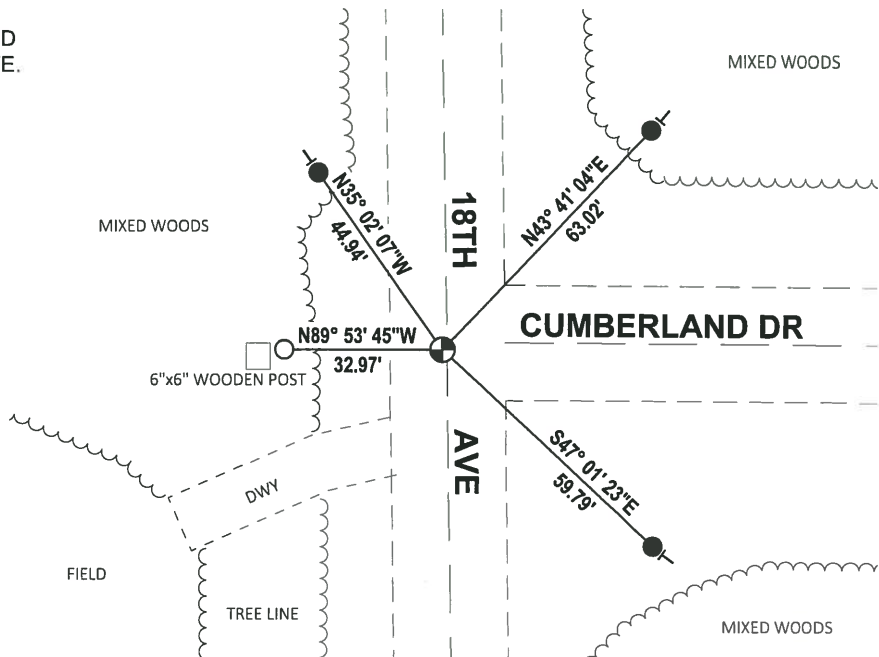
DATA SHOWN HERE ON THIS TIE SHEET IS CORRECT AND COMPLETE TO THE BEST OF MY KNOWLEDGE AND BELIEF.

PROFESSIONAL LAND SURVEYOR

DATE 12/4/2018

### - TIE SKETCH

NOTE: THE CORNER FALLS 1± SOUTH OF THE CENTERLINE OF CUMBERLAND DR AND 1± WEST OF THE CENTERLINE OF 18TH AVE.



- SET 3/4" x 18" IRON REBAR, 1.50#/FT
- FOUND 3/4" IRON ROD
- ⊕ FOUND HARRISON MONUMENT
- VINYL "T" POST

ADAMS COUNTY

CORNER NO. 12

Survey Monument Record

SECTION 21

TYPE OF MONUMENT: 30" HARRISON

TOWN 18

STATE PLANE COORDINATES: N

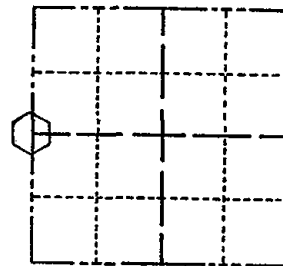
RANGE 5

E

ELEVATION - M.S.L. DATUM:

THETA ANGLE:

FIELD BOOK: 104 PAGE 44



LOCATION (Indicated by 'X')

SEAL:

BASIS FOR MONUMENT LOCATION

(Use reverse side if necessary)

Show info such as: History of corner, with reference to Vol. and pg, dates, surveyor; exact description of monument replaced; if location computed, by taped or EDM traverse; landowner remarks, etc.

Found nail and set 30" Harrison monument

July 8, 1971

Sam T. Mullen R.L.S. S-981

OK 11-17-78 RN-SS
1-TIE GONE, MON. OK, 8-20-92 - JG
2-NEW, 2-5-98 - JG
1-GONE, 5-LEFT, 1-30-03 - JG
OK 11-20-07 CS-65

CERTIFIED CORRECT:

Registered Land Surveyor

DATE:

TIE SKETCH

(Show at least four ties)

R.R. SPIKES SET

