

21 SECTION 18 TOWN 05 RANGE

# ADAMS COUNTY

COUNTY CORNER NO: 86  
ROMPORTOL ID: 41805210020

## PUBLIC LAND SURVEY MONUMENT RECORD

TYPE OF MONUMENT: HARRISON

ADAMS COUNTY COORDINATES, NAD 83 (2007)

N. 234657.764

E. 507291.740

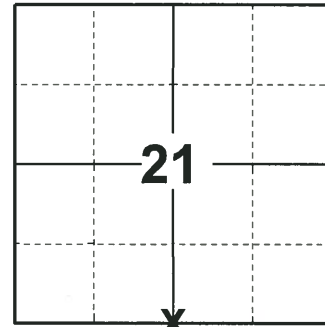
ELEVATION- \_\_\_\_\_ DATUM \_\_\_\_\_

FIELD WORK DATE: 10/31/2018

### BASIS FOR MONUMENT LOCATION

1971 - PLS 981 FOUND NAIL AND SET HARRISON MONUMENT. TIED OUT CORNER.

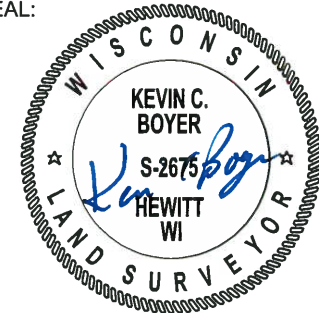
2018 - PLS 2675 FOUND A HARRISON MONUMENT 2" BELOW THE ROAD SURFACE AND 1 TIE. THE MONUMENT AGREES WITH THE EXISTING TIE. ACCEPTED THE HARRISON MONUMENT AS THE CORNER LOCATION. SET 3 NEW TIES AND MEASURED TO THE TIES.



**LOCATION**

(INDICATE CORNER BY "X")

SEAL:



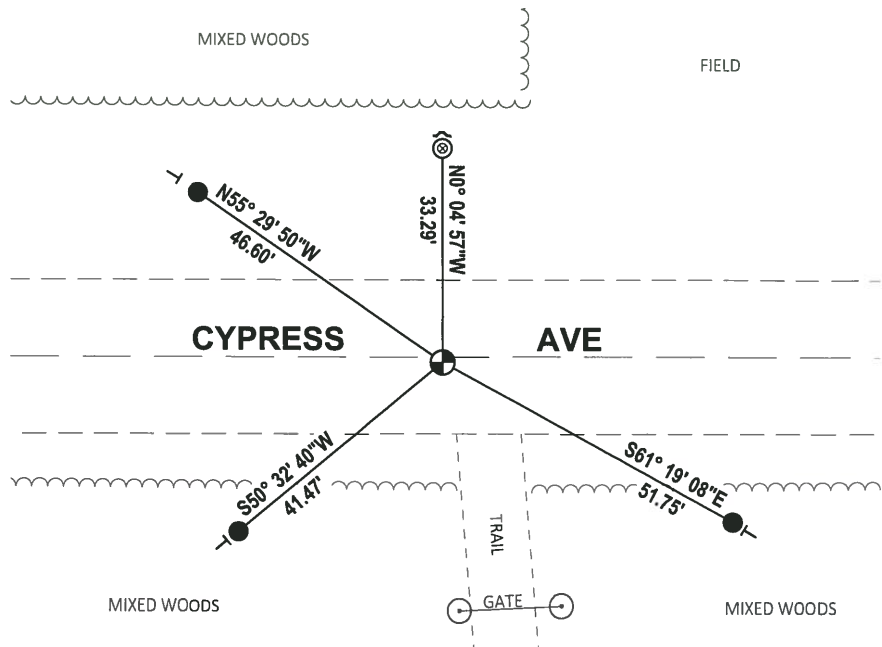
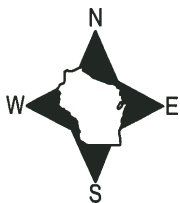
DATA SHOWN HERE ON THIS TIE SHEET IS CORRECT AND COMPLETE TO THE BEST OF MY KNOWLEDGE AND BELIEF.

PROFESSIONAL LAND SURVEYOR

DATE 12/4/2018

### TIE SKETCH

NOTE: THE CORNER FALLS 1½ SOUTH OF THE CENTERLINE OF CYPRESS AVE.



- SET 3/4" x 18" IRON REBAR, 1.50#/FT
- ⊙ FOUND 1-1/2" O.D. IRON PIPE
- ⊕ FOUND HARRISON MONUMENT
- ↙ STEEL FENCE POST
- ┆ VINYL "T" POST

ADAMS COUNTY

Survey Monument Record

CORNER NO. 9

SECTION 21

TOWN 18

RANGE 5

TYPE OF MONUMENT: 30" HARRISON

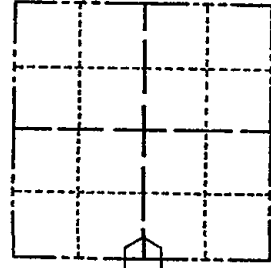
STATE PLANE COORDINATES: N

E

ELEVATION — M.S.L. DATUM:

THETA ANGLE:

FIELD BOOK: 104 PAGE 41



LOCATION (Indicated by 'X')

SEAL:

BASIS FOR MONUMENT LOCATION

(Use reverse side if necessary)

Show info such as: History of corner, with reference to Vol. and pg, dates, surveyor; exact description of monument replaced; if location computed, by taped or EDM traverse; landowner remarks, etc.

Found nail set monument July 7, 1971

Sam T. Mullen R.L.S. S-981

OK 11-17-78 RN-SS  
3-1-82 GR-SS 1 NEW TIE  
1-TIE GONE, 1-NEW TIE, MON OK, 8-20-92-JG  
ALL OK, 2-4-98-JG  
OK, 1-30-03-JG  
OK 11-20-07 CS-SS

CERTIFIED CORRECT:

Registered Land Surveyor

DATE:

TIE SKETCH

(Show at least four ties)

