

30 SECTION 18 TOWN 05 RANGE

ADAMS COUNTY

COUNTY CORNER NO: 95
ROMPORTOL ID: 41805302000

PUBLIC LAND SURVEY MONUMENT RECORD

TYPE OF MONUMENT: HARRISON
ADAMS COUNTY COORDINATES, NAD 83 (2007)

N. 232020.503

E. 499383.833

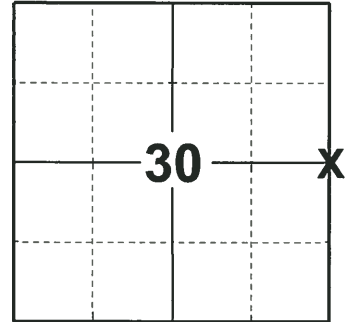
ELEVATION- DATUM

FIELD WORK DATE: 11/21/2018

BASIS FOR MONUMENT LOCATION

1975 - PLS 1103 RAN A EDM/TRANSIT TRAVERSE AROUND SECTION 32 AND TO ADJACENT SECTION CORNERS. FOUND NO EVIDENCE OF THE ORIGINAL CORNER OR ANY REMONUMENTATION. CALCULATED THE CORNER LOCATION EQUIDISTANT AND ON LINE BETWEEN ADJACENT SECTION CORNERS. SET A HARRISON MONUMENT AT THE CALCULATED LOCATION AND TIED OUT.

2018 - PLS 2675 FOUND A HARRISON MONUMENT 6" BELOW THE ROAD SURFACE AND 1 TIE. THE MONUMENT AGREES WITH THE EXISTING TIE. ACCEPTED THE HARRISON MONUMENT AS THE CORNER LOCATION. SET 3 NEW TIES AND MEASURED TO THE TIES.



LOCATION
(INDICATE CORNER BY "X")

SEAL:



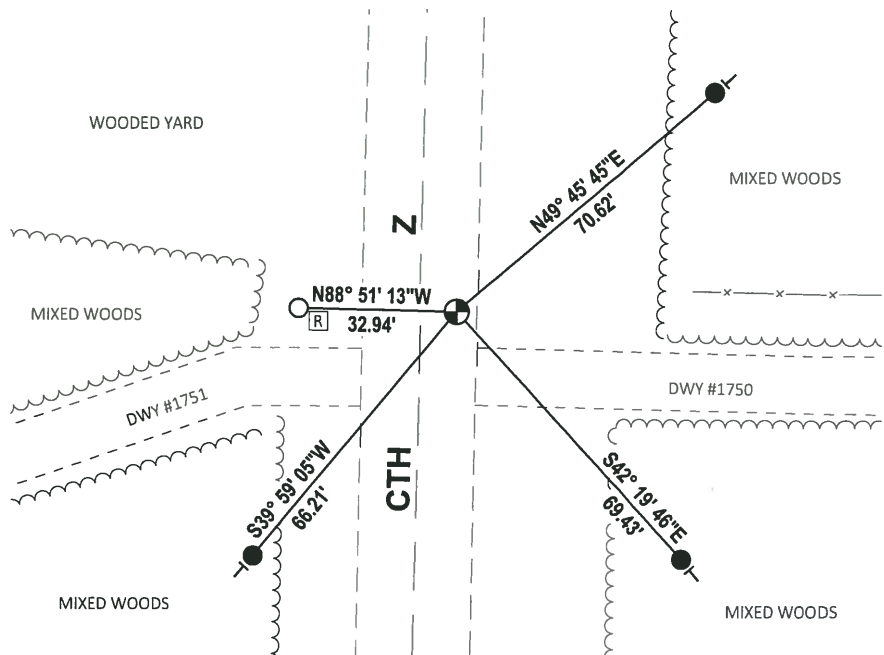
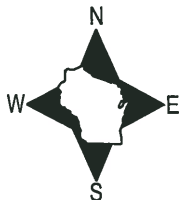
DATA SHOWN HERE ON THIS TIE SHEET IS CORRECT AND COMPLETE TO THE BEST OF MY KNOWLEDGE AND BELIEF.

PROFESSIONAL LAND SURVEYOR

DATE 12/4/2018

- TIE SKETCH

NOTE: THE CORNER FALLS 8± EAST OF THE CENTERLINE OF CTH Z.



- SET 3/4" x 18" IRON REBAR, 1.50#/FT
- FOUND 3/4" IRON ROD
- ⊕ FOUND HARRISON MONUMENT
- Ⓜ RIGHT-OF-WAY GUARD POST
- ← VINYL "T" POST

ADAMS COUNTY

Survey Monument Record

TYPE OF MONUMENT: Standard Harrison

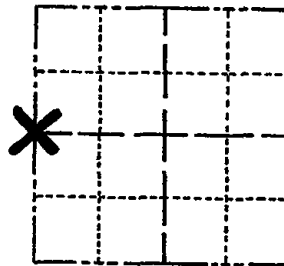
STATE PLANE COORDINATES: N _____
E _____

ELEVATION — M.S.L. DATUM: _____

THETA ANGLE: _____

FIELD BOOK: _____ PAGE _____

CORNER NO. 790
SECTION 29
TOWN 18
RANGE 5



LOCATION
(Indicated by 'X')

SEAL:

BASIS FOR MONUMENT LOCATION

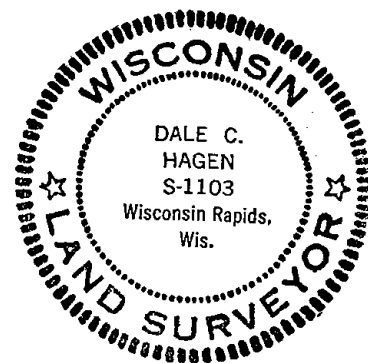
(Use reverse side if necessary)

Show info such as: History of corner, with reference to Vol. and pg, dates, surveyor; exact description of monument replaced; if location computed, by taped or EDM traverse; landowner remarks, etc.

Ran EDM/transit traverse around Section 32 and to adjacent section corners.

Could find no evidence of the original corner or remonumentation.

Set corner equidistant and on line between adjacent section corners.



CERTIFIED CORRECT:

Dale C. Hagen
Registered Land Surveyor

DATE: August 2, 1975

OK 11-17-78 RN-SS
3-1-83 GR-SS OK
1-TIE GONE, 2-NEW TIE, MON.OK, 8-20-92-JG
ALL OK - 2-4-98.- JG
OK, 1-30-93-JG
OK, 12-18-07-JG

TIE SKETCH

(Show at least four ties)

NOTE: Ties in trees to nail in disc.

