

28 SECTION 18 TOWN 05 RANGE

ADAMS COUNTY

COUNTY CORNER NO: 97
ROMPORTOL ID: 41805282000

PUBLIC LAND SURVEY MONUMENT RECORD

TYPE OF MONUMENT: HARRISON (BROKEN-TOP)
ADAMS COUNTY COORDINATES, NAD 83 (2007)

N. 232024.108

E. 509920.599

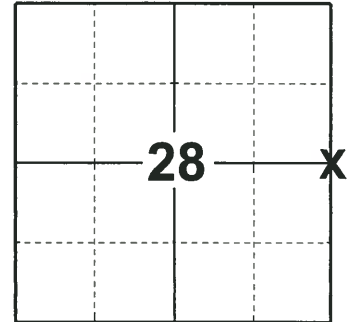
ELEVATION- _____ DATUM _____

FIELD WORK DATE: 11/20/2018

BASIS FOR MONUMENT LOCATION

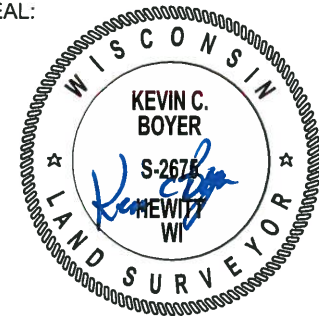
1979 - PLS 1478 EXCAVATED WITH A BACKHOE AND WAS UNABLE TO FIND ANY PREVIOUS MONUMENTATION OR ACCESSORIES AS RECORDED IN THE ORIGINAL NOTES AND ADAMS COUNTY SURVEYOR RECORDS ON PAGE 108 VOL. 2. CALCULATED THE CORNER LOCATION EQUIDISTANT AND ON LINE BETWEEN ADJACENT SECTION CORNERS. SET A HARRISON MONUMENT AT THE CALCULATED LOCATION AND TIED OUT.

2018 - PLS 2675 FOUND A HARRISON MONUMENT WITH A BROKEN-TOP 12" BELOW THE ROAD SURFACE, 3 WITNESS TREES AND 1 PROPERTY IRON. THE MONUMENT AGREES WITH THE EXISTING WITNESS TREES. ACCEPTED THE HARRISON MONUMENT WITH A BROKEN-TOP AS THE CORNER LOCATION. SET 3 NEW TIES AND MEASURED TO THE TIES, WITNESS TREES AND PROPERTY IRON.



LOCATION
(INDICATE CORNER BY "X")

SEAL:



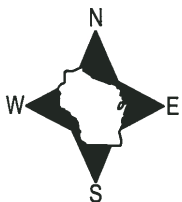
DATA SHOWN HERE ON THIS TIE SHEET IS CORRECT AND COMPLETE TO THE BEST OF MY KNOWLEDGE AND BELIEF.

PROFESSIONAL LAND SURVEYOR

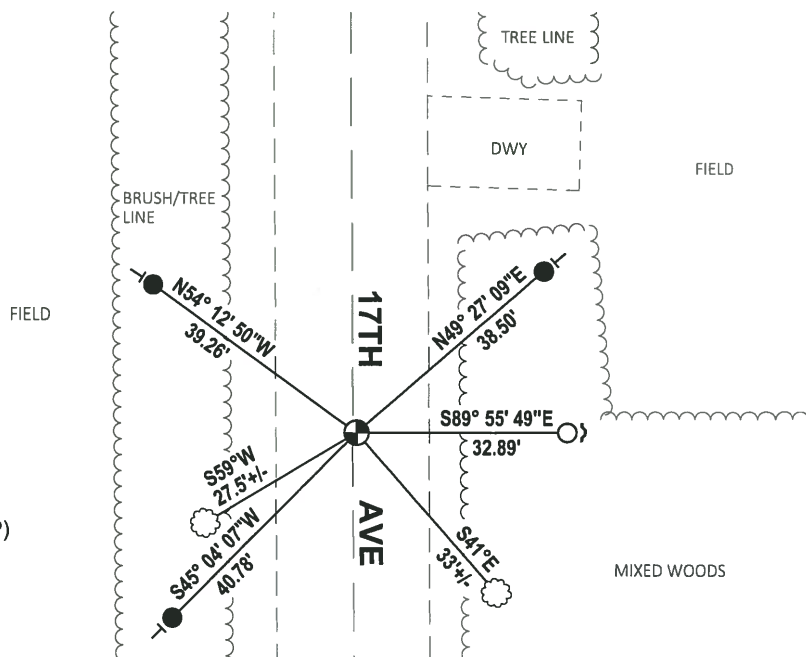
DATE 12/4/2018

- TIE SKETCH

NOTE: THE CORNER FALLS 1± EAST OF THE CENTERLINE OF 17TH AVE.



- SET 3/4" x 18" IRON REBAR, 1.50#/FT
- FOUND 3/4" IRON ROD
- ⊕ FOUND HARRISON MONUMENT (BROKEN-TOP)
- ┌ STEEL FENCE POST
- └ VINYL "T" POST
- ⊙ WITNESS TREE



Government Land Corner Certificate

ADAMS County

TYPE OF MONUMENT: HARRISON

STATE PLANE COORDINATES: N _____
E _____

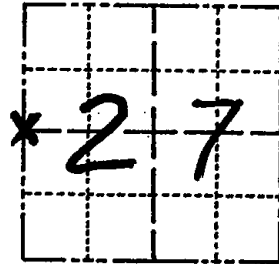
ELEVATION — M.S.L. DATUM: _____

THETA ANGLE: _____

FIELD BOOK: 66 PAGE 191

DRAWN BY: G. RHINEHART

CORNER NO. 97
SECTION 27
TOWN 18
RANGE 5



LOCATION
(Indicated by 'X')

BASIS FOR MONUMENT LOCATION

Show info such as: History of corner, with reference to Vol. and pg., dates, surveyor; exact description of monument replaced; if location computed, by taped or EDM traverse; landowner remarks, etc. (Use reverse side if necessary)

Excavated with backhoe and ~~were~~ ^{were} unable to find any previous monumentation or accessories as recorded in the original notes and Adams County Surveyor Records on page 108 of Vol. 2. Set monument equidistant and on line between adjacent section corners.

SEAL:



DATA SHOWN HERE ON
CERTIFIED CORRECT:

Gregory P. Rhinehart
Registered Land Surveyor

DATE: June 13, 1979

TIE SKETCH

Show at least four ties, also fence lines, roads, topo, size and type of witness trees and if off road - best way to arrive at corner.

