

26 SECTION 18 TOWN 05 RANGE

ADAMS COUNTY

COUNTY CORNER NO: 99
ROMPORTOL ID: 41805262000

PUBLIC LAND SURVEY MONUMENT RECORD

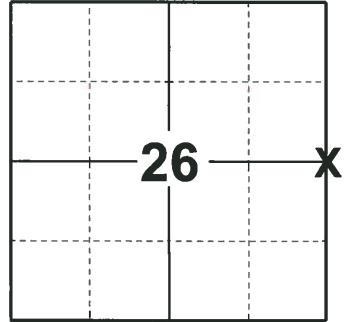
TYPE OF MONUMENT: HARRISON (BROKEN-TOP)
ADAMS COUNTY COORDINATES, NAD 83 (2007)

N. 232048.944

E. 520449.757

ELEVATION- DATUM

FIELD WORK DATE: 11/19/2018



LOCATION

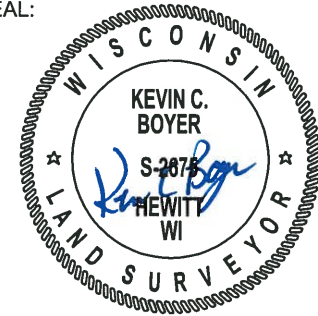
(INDICATE CORNER BY "X")

BASIS FOR MONUMENT LOCATION

1974 - PLS 878 EXCAVATED AREA WITH A BACKHOE OPPOSITE FENCE LINE AND FOUND NO EVIDENCE OF THE CORNER. CALCULATED THE CORNER LOCATION ON LINE AND EQUIDISTANT BETWEEN SECTION CORNERS. SET A HARRISON MONUMENT AT THE CALCULATED LOCATION AND TIED OUT.

2018 - PLS 2675 FOUND A HARRISON MONUMENT WITH A BROKEN-TOP 24" BELOW THE GROUND SURFACE. FOUND NO EVIDENCE OF ANY OF THE EXISTING TIES OR WITNESSES. ACCEPTED THE HARRISON MONUMENT WITH A BROKEN-TOP AS THE BEST EVIDENCE OF THE CORNER LOCATION. AFTER REVIEW THE CORNER FALLS NEAR EQUIDISTANT AND ON LINE. SET 4 NEW TIES AND MEASURED TO THE TIES.

SEAL:



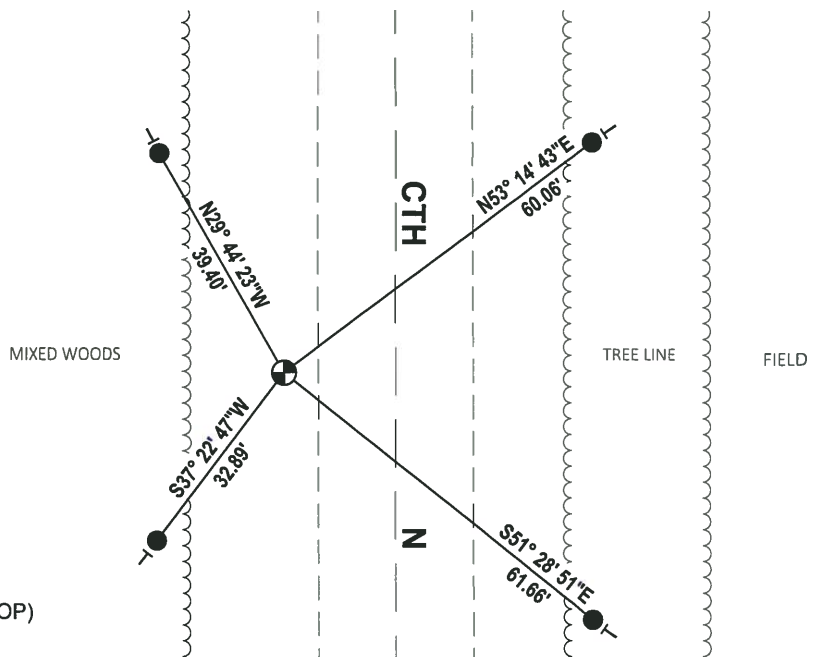
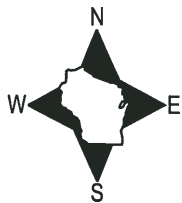
DATA SHOWN HERE ON THIS TIE SHEET IS CORRECT AND COMPLETE TO THE BEST OF MY KNOWLEDGE AND BELIEF.

PROFESSIONAL LAND SURVEYOR

DATE 12/4/2018

- TIE SKETCH

NOTE: THE CORNER FALLS 17'± WEST OF THE CENTERLINE OF CTH N.



- SET 3/4" x 18" IRON REBAR, 1.50#/FT
- ⊕ FOUND HARRISON MONUMENT (BROKEN-TOP)
- VINYL "T" POST

ADAMS COUNTY

Survey Monument Record

TYPE OF MONUMENT: Harrison Standard

STATE PLANE COORDINATES: N _____

E _____

ELEVATION — M.S.L. DATUM: _____

THETA ANGLE: _____

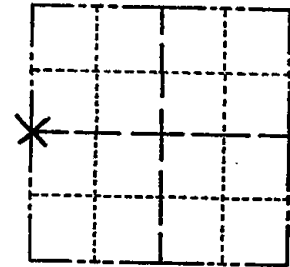
FIELD BOOK: _____ PAGE _____

CORNER NO. 444

SECTION 25

TOWN 18

RANGE 5



LOCATION
(Indicated by 'X')

SEAL:

BASIS FOR MONUMENT LOCATION

(Use reverse side if necessary)

Show info such as: History of corner, with reference to Vol. and pg, dates, surveyor; exact description of monument replaced; if location computed, by taped or EDM traverse; landowner remarks, etc.

Excavated area with backhoe opposite fence line. Found no evidence. Point established on line and equi-distant between section corners.



OK 7-8-78 RK-SS

TOP BROKEN - BOTTOM IN PLACE - 2 NEW TIES
3-1-83 GR-SS

9-2-92 - JG - OK

1 - GONE 1 - NEW, 2-3-98 - JG
2 - NEW, 5-1-03 - JG

CERTIFIED CORRECT:

Anthony B. Kiedrowski
Registered Land Surveyor

DATE: July 31, 1974

TIE SKETCH OK, 12-11-07, SG-SS All ties to nail and disc.

(Show at least four ties)

