

30 SECTION 18 TOWN 05 RANGE

ADAMS COUNTY

COUNTY CORNER NO: 103
ROMPORTOL ID: 41805300000

PUBLIC LAND SURVEY MONUMENT RECORD

TYPE OF MONUMENT: HARRISON
ADAMS COUNTY COORDINATES, NAD 83 (2007)

N. 229383.331

E. 499351.537

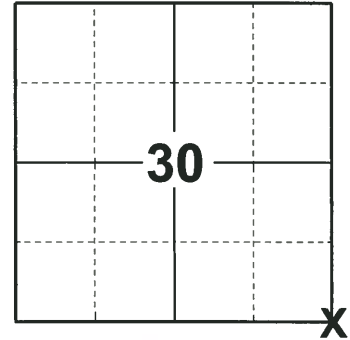
ELEVATION- _____ DATUM _____

FIELD WORK DATE: 11/21/2018

BASIS FOR MONUMENT LOCATION

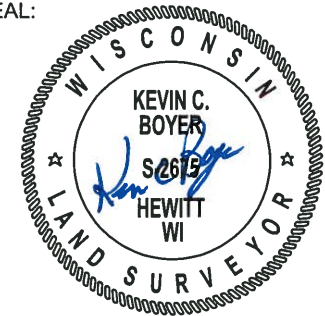
1975 - PLS 1103 RAN A EDM/TRANSIT TRAVERSE AROUND SECTION 32 AND TO ADJACENT SECTION CORNERS. FOUND NO EVIDENCE OF THE ORIGINAL CORNER OR ANY REMONUMENTATION BY EXCAVATION WITH A BACKHOE. SET THE CORNER LOCATION AT THE RECORD DISTANCE FROM THE NORTHEAST CORNER OF SECTION 32 AS RECORDED IN VOLUME 1, PAGE 193 OF THE ADAMS COUNTY SURVEY RECORDS AND AS COMPLETED BY M.C. SMITH, COUNTY SURVEYOR, ON APRIL 1914. SET A HARRISON AT THE CORNER LOCATION AND TIED OUT.

2018 - PLS 2675 FOUND A HARRISON MONUMENT 4" BELOW THE ROAD SURFACE 1 TIE, 3 RIGHT-OF-WAY IRONS AND 1 NGS MONUMENT. THE MONUMENT AGREES WITH THE EXISTING TIE. ACCEPTED THE HARRISON MONUMENT AS THE CORNER LOCATION AND RE-MEASURED TO THE EXISTING TIE, RIGHT-OF-WAY IRONS AND NGS MONUMENT.



LOCATION
(INDICATE CORNER BY "X")

SEAL:



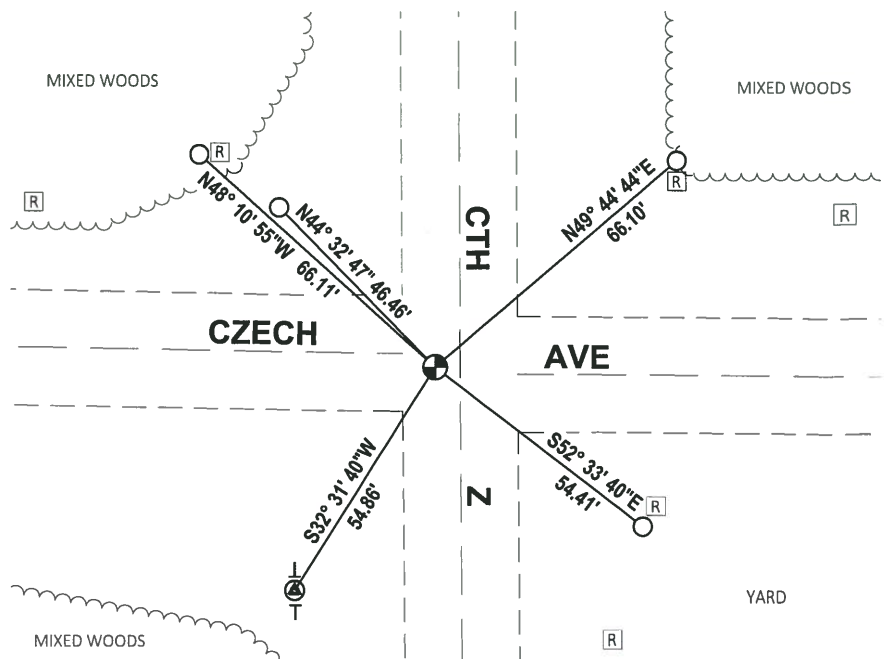
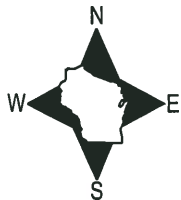
DATA SHOWN HERE ON THIS TIE SHEET IS CORRECT AND COMPLETE TO THE BEST OF MY KNOWLEDGE AND BELIEF.

PROFESSIONAL LAND SURVEYOR

DATE 12/4/2018

- TIE SKETCH

NOTE: THE CORNER FALLS 1± SOUTH OF THE CENTERLINE OF CZECH AVE AND 5± WEST OF THE CENTERLINE OF CTH Z.



- FOUND 3/4" IRON ROD
- ⊕ FOUND NGS MONUMENT 4F04
- ⊕ FOUND HARRISON MONUMENT
- Ⓜ RIGHT-OF-WAY GUARD POST
- VINYL "T" POST

ADAMS COUNTY

Survey Monument Record

TYPE OF MONUMENT: Standard Harrison

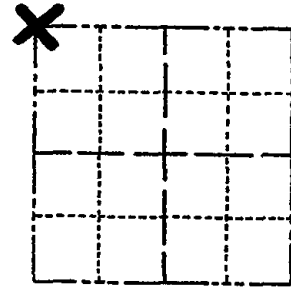
STATE PLANE COORDINATES: N _____
E _____

ELEVATION — M.S.L. DATUM: _____

THETA ANGLE: _____

FIELD BOOK: _____ PAGE _____

CORNER NO. 792
SECTION 32
TOWN 18
RANGE 5



LOCATION
(Indicated by 'X')

SEAL:

BASIS FOR MONUMENT LOCATION

(Use reverse side if necessary)

Show info such as: History of corner, with reference to Vol. and pg, dates, surveyor; exact description of monument replaced; if location computed, by taped or EDM traverse; landowner remarks, etc.

Ran EDM/transit traverse around Section 32 and to adjacent section corners.

Could find no evidence of the original corner or subsequent remonumentation by excavation with backhoe.

Set corner at record distance from Northeast corner of Section 32 as recorded in Volume 1, Page 193 of Adams County Survey records and as completed by M.C. Smith, County Surveyor, on April, 1914.



OK 11-17-78 RN-SS
3-TIES GONE, 3-NEW TIES, MON. OK. 8-20-92-JG
ALL OK 2-4-98-JG
OK, 1-30-03-JG
OK, 12-11-07-JG-SS

CERTIFIED CORRECT:

Dale C. Hagen
Registered Land Surveyor

DATE: August 7, 1975

TIE SKETCH

(Show at least four ties)

