

28  
SECTION

18  
TOWN

05  
RANGE

# ADAMS COUNTY

COUNTY CORNER NO: 107

ROMPORTOL ID: 41805280000

## PUBLIC LAND SURVEY MONUMENT RECORD

TYPE OF MONUMENT: RAILROAD SPIKE W/DIMPLE  
ADAMS COUNTY COORDINATES, NAD 83 (2007)

N. 229383.505

E. 509928.541

ELEVATION-        DATUM       

FIELD WORK DATE: 11/20/2018

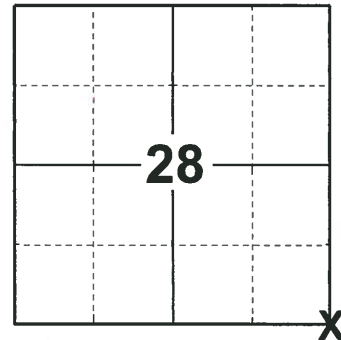
### BASIS FOR MONUMENT LOCATION

1973 - PLS 878 EXCAVATED WITH A BACKHOE AND FOUND THE BOTTOM OF AN OLD POST. REPLACED THE OLD POST WITH A HARRISON MONUMENT AND TIED OUT.

2004 REMOVED HARRISON MONUMENT FOR ROAD CONSTRUCTION.

2008 RAILROAD SPIKE SET AT THE CORNER LOCATION.

2018 - PLS 2675 FOUND A RAILROAD SPIKE WITH A DIMPLE IN THE ROAD SURFACE AND 2 TIES. DID NOT LOOK FOR A HARRISON MONUMENT SINCE IT WAS REMOVED FOR ROAD CONSTRUCTION ON 5-13-2004 AND A RAILROAD SPIKE WAS SET AFTER CONSTRUCTION IN 2008. THE MONUMENT AGREES WITH THE EXISTING TIES. ACCEPTED THE RAILROAD SPIKE WITH A DIMPLE AS THE CORNER LOCATION. SET 2 NEW TIES AND MEASURED TO THE TIES.



**LOCATION**

(INDICATE CORNER BY "X")

SEAL:



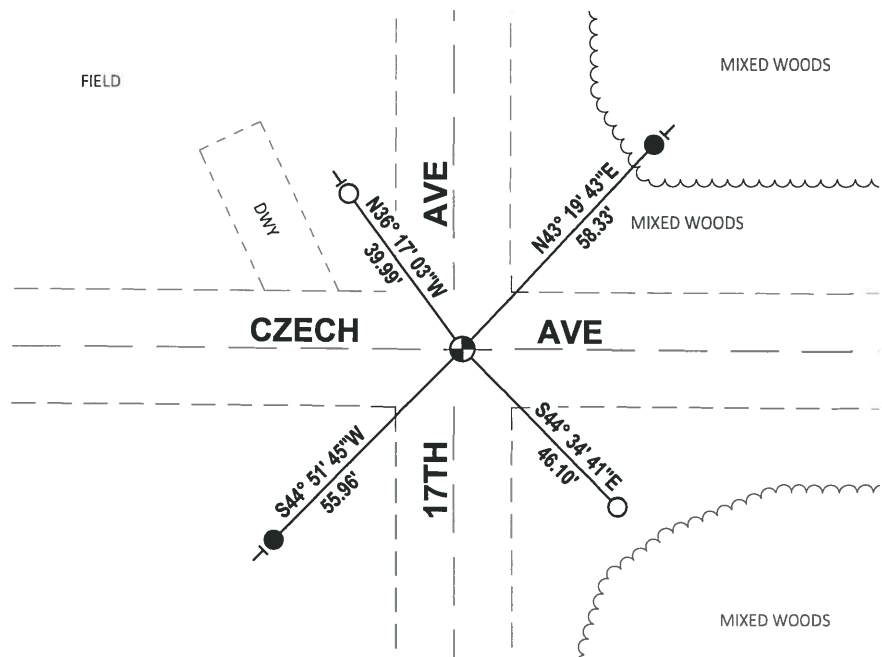
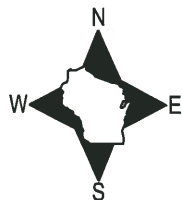
DATA SHOWN HERE ON THIS TIE SHEET IS CORRECT AND COMPLETE TO THE BEST OF MY KNOWLEDGE AND BELIEF.

PROFESSIONAL LAND SURVEYOR

DATE 12/4/2018

### - TIE SKETCH

NOTE: THE CORNER FALLS 2± EAST OF THE CENTERLINE OF 17TH AVE.



- SET 3/4" x 18" IRON REBAR, 1.50#/FT
- FOUND 3/4" IRON ROD
- ⊕ FOUND RAILROAD SPIKE W/DIMPLE
- | VINYL "T" POST

ADAMS COUNTY RR SPIKE '08

107

Survey Monument Record

TYPE OF MONUMENT: ~~Harrison Standard~~

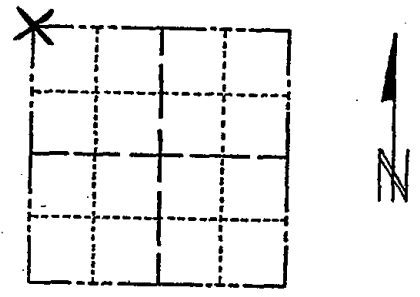
STATE PLANE COORDINATES: N \_\_\_\_\_ E \_\_\_\_\_

ELEVATION - M.S.L. DATUM: \_\_\_\_\_

THETA ANGLE: \_\_\_\_\_

FIELD BOOK: 108 PAGE 120

CORNER NO. 324  
SECTION 34  
TOWN 18  
RANGE 5



LOCATION (Indicated by 'X')

SEAL:

BASIS FOR MONUMENT LOCATION

(Use reverse side if necessary)

Show info such as: History of corner, with reference to Vol. and pg, dates, surveyor; exact description of monument replaced; if location computed, by taped or EDM traverse; landowner remarks, etc.

Excavated with backhoe. Found bottom of old post and monumented same.



- OK 7-8-73 PR-SS
- OK 3-1-83 GR-SS
- OK 8-18-92 BS
- 2-GONE, 2-NEW, 2-4-98-JG
- 2-GONE, 2-NEW, MON. OK, 1-29-03-JG

CERTIFIED CORRECT:

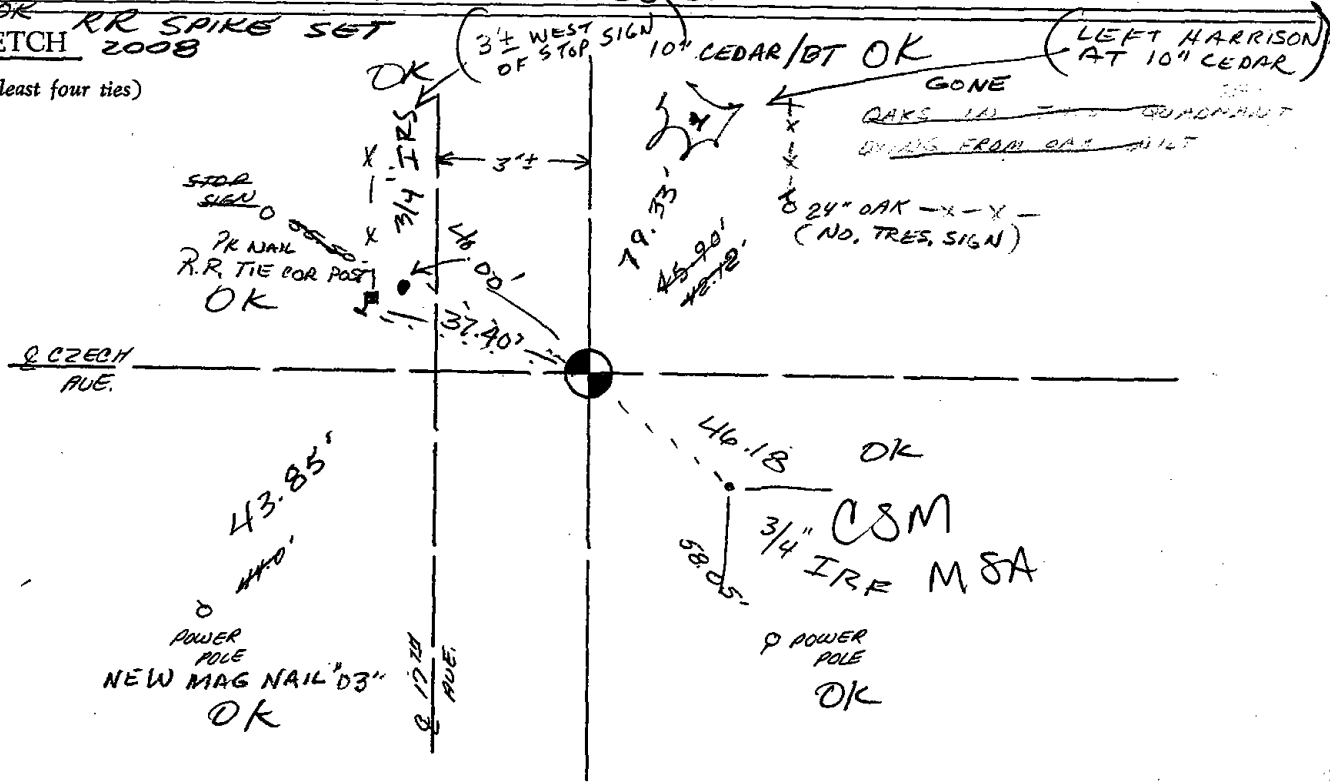
*Anthony B. Kiedrowski*  
Registered Land Surveyor

DATE: July 1973

REMOVED HARRISON FOR ROAD CONSTR. 5-13-04 JG-DA

TIES OK RR SPIKE SET  
TIE SKETCH 2008

(Show at least four ties)



# ADAMS COUNTY

CORNER NO. 324

## Survey Monument Record

SECTION 34

TYPE OF MONUMENT: Harrison Standard

TOWN 18

STATE PLANE COORDINATES: N \_\_\_\_\_

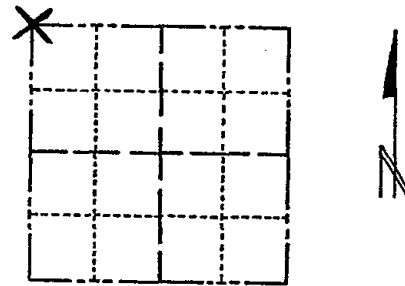
RANGE 5

E \_\_\_\_\_

ELEVATION — M.S.L. DATUM: \_\_\_\_\_

THETA ANGLE: \_\_\_\_\_

FIELD BOOK: 108 PAGE 120



LOCATION  
(Indicated by 'X')

SEAL:

### BASIS FOR MONUMENT LOCATION

(Use reverse side if necessary)

Show info such as: History of corner, with reference to Vol. and pg, dates, surveyor; exact description of monument replaced; if location computed, by taped or EDM traverse; landowner remarks, etc.

Excavated with backhoe. Found bottom of old post and monumented same.



OK 7-8-78 RK-SS

OK 3-1-83 GR-SS

OK 8-18-92 BS

2-GONE, 2-NEW, 2-498-JG

2-GONE, 2-NEW, MON. OK, 1-29-03-JG

CERTIFIED CORRECT:

*Anthony B. Kiedrowski*

Registered Land Surveyor

DATE: July 1973

### TIE SKETCH

(Show at least four ties)

