

27  
SECTION

18  
TOWN

05  
RANGE

# ADAMS COUNTY

COUNTY CORNER NO: 108

ROMPORTOL ID: 41805270020

## PUBLIC LAND SURVEY MONUMENT RECORD

TYPE OF MONUMENT: RAILROAD SPIKE  
ADAMS COUNTY COORDINATES, NAD 83 (2007)

N. 229385.834

E. 512545.998

ELEVATION-      DATUM     

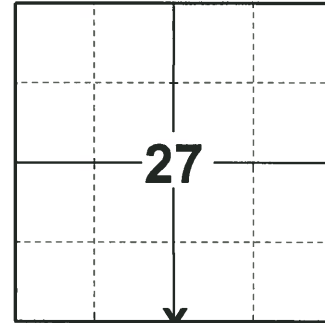
FIELD WORK DATE: 11/19/2018

### BASIS FOR MONUMENT LOCATION

1974 - PLS 881 LOCATION BY E.D.M. TRAVERSE. EAST, WEST AND SOUTH FITS GOOD. CENTER OF ROAD EAST AND WEST IS IN LINE WITH FENCE TO THE NORTH. CO. SURVEYOR (KIEDROWSKI) LOOKED FOR THE CORNER WITH A BACKHOE AND FOUND NOTHING. SET HARRISON MONUMENT WITH TIES.

2008 - PLS (UNKNOWN) RAILROAD SPIKE SET FROM TIES.

2018 - PLS 2675 FOUND A RAILROAD SPIKE IN THE ROAD SURFACE. DID NOT RECOVER ANY TIES OR WITNESSES DUE TO RECENT LOGGING ACTIVITY. ALSO, DID NOT LOOK FOR A HARRISON SINCE IT WAS REMOVED FOR CONSTRUCTION 5-13-2004 AND A RAILROAD SPIKE WAS SET AFTER CONSTRUCTION 7-29-08. ACCEPTED THE RAILROAD SPIKE AS THE BEST EVIDENCE OF THE CORNER LOCATION. SET 4 NEW TIES AND MEASURED TO THE TIES.



**LOCATION**

(INDICATE CORNER BY "X")

SEAL:



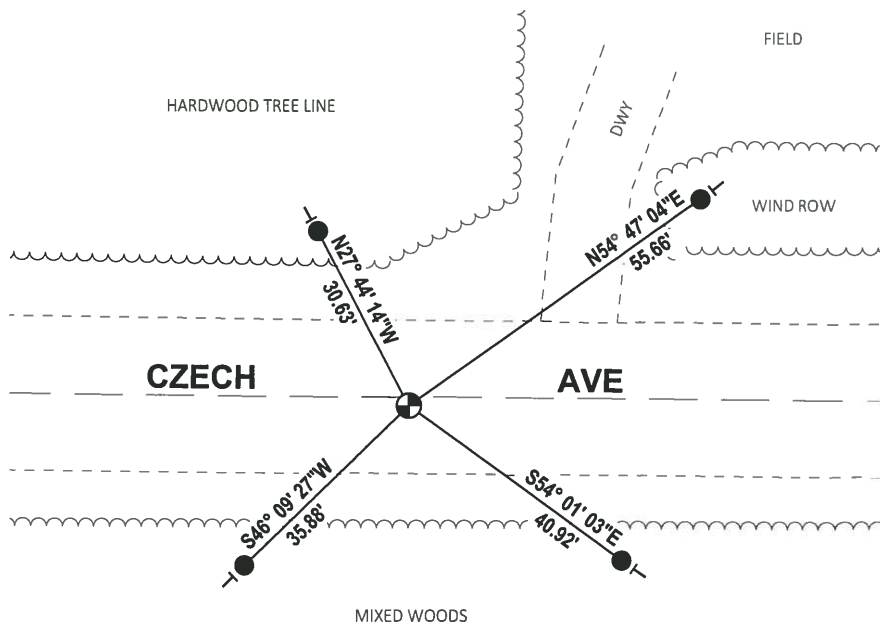
DATA SHOWN HERE ON THIS TIE SHEET IS CORRECT AND COMPLETE TO THE BEST OF MY KNOWLEDGE AND BELIEF.

PROFESSIONAL LAND SURVEYOR

DATE 12/4/2018

### TIE SKETCH

NOTE: THE CORNER FALLS 1± SOUTH OF THE CENTERLINE OF CZECH AVE.



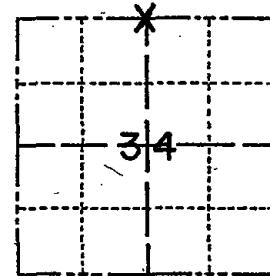
- SET 3/4" x 18" IRON REBAR, 1.50#/FT
- ⊕ FOUND RAILROAD SPIKE
- VINYL "T" POST

**ADAMS COUNTY**

**Survey Monument Record**

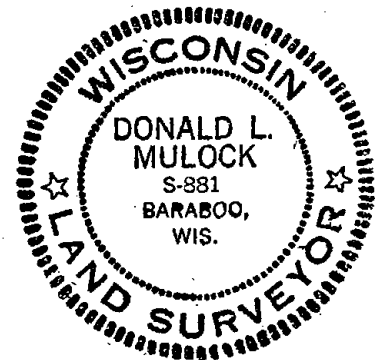
TYPE OF MONUMENT: HARRISON RR SPIKE 7-29-08  
 STATE PLANE COORDINATES: N 7273.74  
 ASSUMED E 2801.95  
 ELEVATION — M.S.L. DATUM: \_\_\_\_\_  
 THETA ANGLE: \_\_\_\_\_  
 FIELD BOOK: 440 ADAMS PAGE -2-

CORNER NO. 469  
 SECTION 34  
 TOWN 18 N.  
 RANGE 5 E.



LOCATION (Indicated by 'X')

SEAL:



**BASIS FOR MONUMENT LOCATION**

(Use reverse side if necessary)

Show info such as: History of corner, with reference to Vol. and pg. dates, surveyor; exact description of monument replaced; if location computed, by taped or EDM traverse; landowner remarks, etc.

LOCATION BY E.D.M. TRAVERSE.

EAST, WEST, & SOUTH, FITS GOOD.  
 CENTER OF ROAD EAST & WEST IN LINE WITH FENCE TO THE NORTH.  
 CO. SURVEYOR (KIEDROWSKI) LOOKED FOR CORNER WITH BACKHOE AND FOUND NOTHING. SET HARRISON MON. WITH TIES. 3-4-74 (SEE BELOW)

OK 7-8-78  
 2-1-82 OK-SS OK  
 8-18-92 BS OK  
 OK-2-4-98-JG  
 3-GONE, 4-NEW, MON. OK, 1-29-03-JG

CERTIFIED CORRECT:

*Donald L. Mulock*

Registered Land Surveyor

DATE: MARCH 7-1974

TIE SKETCH ~~REMOVED HARRISON~~ FOR ROAD CONSTR. 5-13-04 JC-DA  
 RR SPIKE SET FROM TIES 7-29-08  
 (Show at least four ties) NOTE: NAILS FACING CORNER

